

Beaches

- Aliso Beach County Park
- Bayside Drive Beach
- Capistrano Beach County Park
- Crescent Bay Point Park
- Eleventh Street Beach
- North Star Beach/Mariner's Beach
- Poche Beach
- Salt Creek Beach County Park
- Santa Ana River Mouth Beach
- Sunset Beach
- Sunset Harbor
- Table Rock Beach
- Thousand Steps Beach
- Three Arch Bay Beach



Aliso Beach County Park

Situated beneath the scenic coastal hillsides of Laguna Beach, Aliso Beach County Park includes sandy beaches and rocky promontories along the ocean and an area inland of Pacific Coast Highway adjacent Aliso Creek and surrounded by native coastal chaparral.

Location	Parking
In south Orange County within the City of Laguna Beach (Fifth Supervisorial District)	<ul style="list-style-type: none"> • 146 spaces adjacent beach • 120 spaces inland
Size	
15 acres fee 12 acres easement	

Unique Features

- Tide pool
- Tot lot
- Food/beach equipment concession

Estimated Annual Attendance (Calendar Year – 2006)	Expenses (Fiscal Year 05/06)	Revenues (Fiscal Year 05/06)
1,108,493	\$668,249	\$155,373



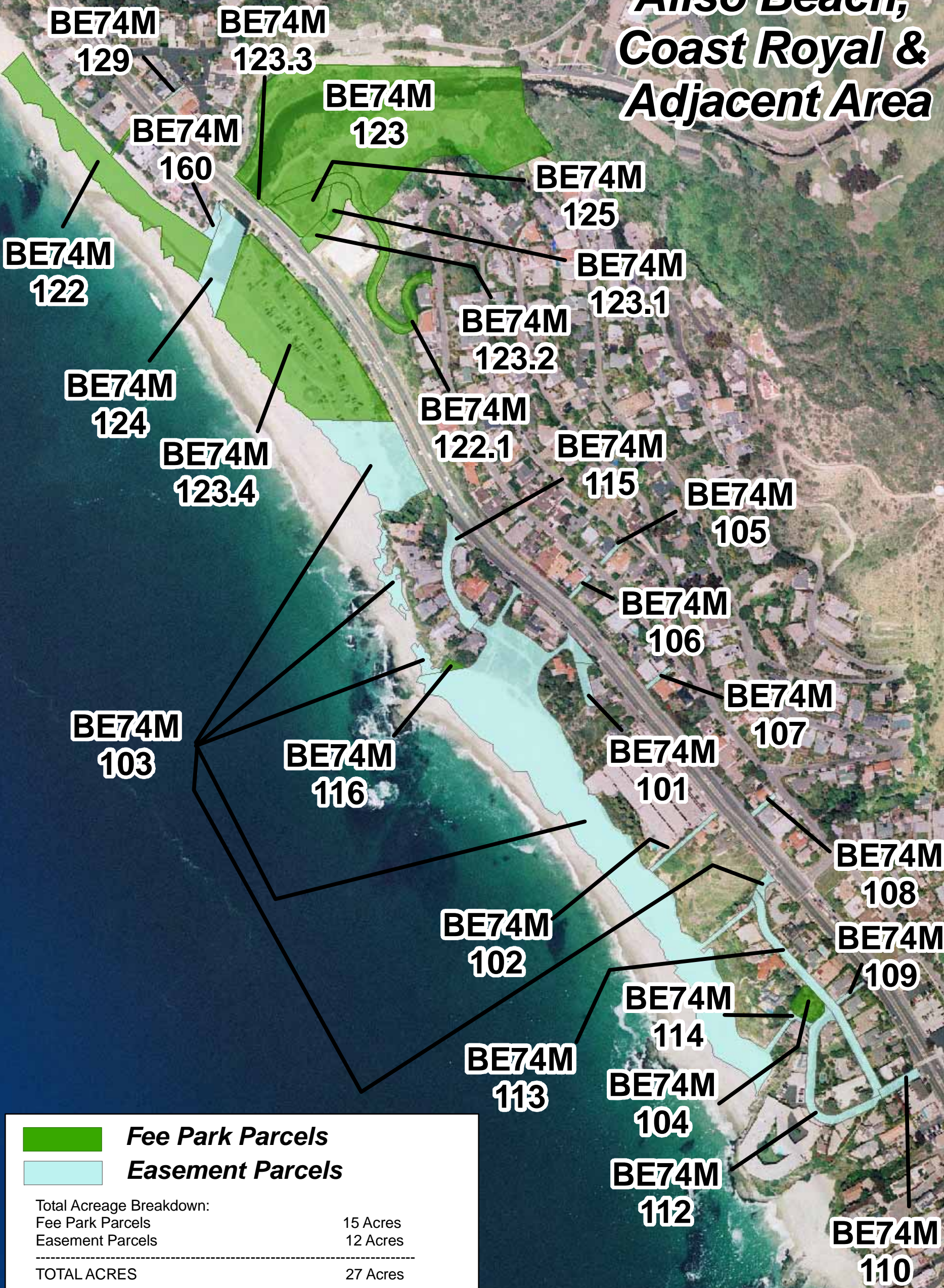
ALISO BEACH

	Facility	Facility Parcel #	Uses	Acres	Constraints
FEE PARK PARCELS					
	BE74M	104	FEE	0.19	
	BE74M	116	FEE	0.04	
	BE74M	122	FEE	1.85	
	BE74M	122.1	FEE	0.77	
	BE74M	123	FEE	7.41	
	BE74M	123.1	FEE	0.19	
	BE74M	123.2	FEE	0.11	
	BE74M	123.3	FEE	0.02	
	BE74M	123.4	FEE	3.72	
	BE74M	125	FEE	0.40	
	BE74M	129	FEE	0.01	
TOTAL ACRES:				14.71	
IOD PARCELS					
TOTAL ACRES:					
EASEMENT PARCELS					
	BE74M	101	Esmt (Pedestrian Access)	0.11	
	BE74M	102	Esmt (Pedestrian Access)	0.08	
	BE74M	103	Esmt (Pedestrian Access)	0.06	
	BE74M	105	Esmt (Pedestrian Access)	0.04	
	BE74M	106	Esmt (Pedestrian Access)	0.03	
	BE74M	107	Esmt (Pedestrian Access)	0.03	
	BE74M	108	Esmt (Pedestrian Access)	0.03	
	BE74M	109	Esmt (Pedestrian Access)	0.04	
	BE74M	110	Esmt (Pedestrian Access)	0.10	
	BE74M	112	Esmt (Pedestrian Access)	0.41	
	BE74M	113	Esmt (Pedestrian Access)	0.54	
	BE74M	114	Esmt (Pedestrian Access)	0.04	
	BE74M	115	Esmt (Pedestrian Access)	0.31	
	BE74M	103	Esmt (Resource Preservation)	1.36	
	BE74M	103	Esmt (Resource Preservation)	0.24	
	BE74M	103	Esmt (Resource Preservation)	1.00	
	BE74M	103	Esmt (Resource Preservation)	6.64	
	BE74M	124	Esmt (Resource Preservation)	0.58	
	BE74M	160	Esmt (Resource Preservation)	0.07	
TOTAL ACRES:				11.71	
LEASED PARCELS					
TOTAL ACRES:					
LOCAL PARKS					
TOTAL ACRES:					

ALISO BEACH

	Facility	# of Parcels	Uses	Acres	Constraints
FEE PARK PARCELS					
	BE74M	11	FEE	14.71	
TOTALS:		11		14.71	
IOD PARCELS					
TOTALS:					
EASEMENT PARCELS					
	BE74M	19	Esmt (Pedestrian Access), Esmt (Resource Preservation)	11.71	
TOTALS:		20		11.71	
LEASED PARCELS					
TOTALS:					
LOCAL PARKS					
TOTALS:					

Aliso Beach, Coast Royal & Adjacent Area

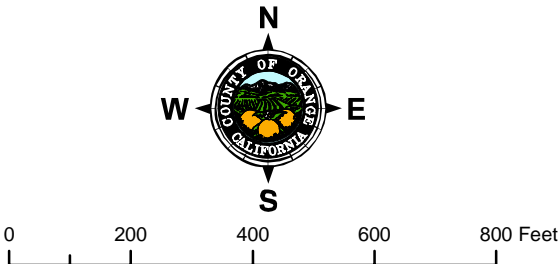


DESIGNED AND PRODUCED BY:
Resources & Development Management Department
GIS Mapping Unit
Philip Pappas

DATA SOURCE:
-Geomatics Land Information Systems Division
-Eagle Aerial Image 1 foot resolution, flown 4/18/2006

The County of Orange and Geomatics/LIS/GIS make no representations or warranties regarding the accuracy of the data from which this map was derived. Neither the County nor Geomatics/LIS/GIS shall be liable under any circumstances for any direct, indirect, special, incidental or consequential damages with respect to any claim by any user or any third party on account of or arising from the use of this map.

DATE: January 3, 2007



BAYSIDE DRIVE BEACH

	Facility	Facility Parcel #	Uses	Acres	Constraints
FEE PARK PARCELS					
	Bayside Drive Beach		FEE	5.35	
TOTAL ACRES:				5.35	
IOD PARCELS					
TOTAL ACRES:					
EASEMENT PARCELS					
TOTAL ACRES:					
LEASED PARCELS					
TOTAL ACRES:					
LOCAL PARKS					
TOTAL ACRES:					

BAYSIDE DRIVE BEACH

	Facility	# of Parcels	Uses	Acres	Constraints
FEE PARK PARCELS					
	Bayside Drive Beach	1	FEE	5.35	
TOTALS:		1		5.35	
IOD PARCELS					
TOTALS:					
EASEMENT PARCELS					
TOTALS:					
LEASED PARCELS					
TOTALS:					
LOCAL PARKS					
TOTALS:					

Bayside Drive Beach



Bayside
Drive
Beach



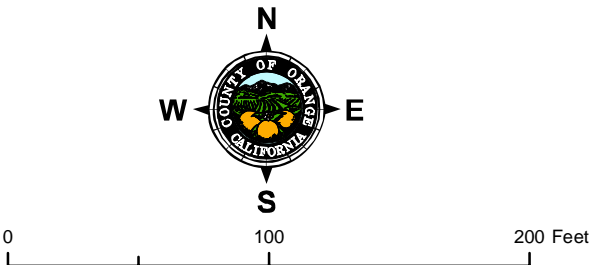
Fee Park Parcels

Total Acreage Breakdown:	
Fee Park Parcels	5 Acres

TOTAL ACRES	5 Acres

* Estimated acreage based on aerial photograph

DESIGNED AND PRODUCED BY: Resources & Development Management Department GIS Mapping Unit Philip Pappas
DATA SOURCE: -Geomatics Land Information Systems Division -Eagle Aerial Image 1 foot resolution, flown 4/18/2006
<small>The County of Orange and Geomatics/LIS/GIS make no representations or warranties regarding the accuracy of the data from which this map was derived. Neither the County nor Geomatics/LIS/GIS shall be liable under any circumstances for any direct, indirect, special, incidental or consequential damages with respect to any claim by any user or any third party on account of or arising from the use of this map.</small>
DATE: January 3, 2007



Capistrano Beach County Park

Situated beneath scenic bluffs, Capistrano Beach County Park offers a wide stretch of sandy beach, restrooms and parking.

Location	Parking
In south Orange County within the City of Dana Point (Fifth Supervisorial District)	<ul style="list-style-type: none"> 140 spaces adjacent beach
Size	
7 acres	

Unique Features

- Volleyball courts
- Basketball
- Bicycle and beach equipment rentals

Estimated Annual Attendance (Calendar Year – 2006)	Expenses (Fiscal Year 05/06)	Revenues (Fiscal Year 05/06)
498,243	\$29,905	\$59,663



CAPISTRANO BEACH


	Facility	Facility Parcel #	Uses	Acres	Constraints
FEE PARK PARCELS					
	BE78F	101	FEE	4.24	
	BE78F	101.01	FEE	2.75	
	BE78F	102.02	FEE	0.04	
TOTAL ACRES:				7.03	
IOD PARCELS					
TOTAL ACRES:					
EASEMENT PARCELS					
TOTAL ACRES:					
LEASED PARCELS					
TOTAL ACRES:					
LOCAL PARKS					
TOTAL ACRES:					

CAPISTRANO BEACH

	Facility	# of Parcels	Uses	Acres	Constraints
FEE PARK PARCELS					
	BE78F	3	FEE	7.03	
TOTALS:		3		7.03	
IOD PARCELS					
TOTALS:					
EASEMENT PARCELS					
TOTALS:					
LEASED PARCELS					
TOTALS:					
LOCAL PARKS					
TOTALS:					

Capistrano Beach



	Fee Park Parcels
Total Acreage Breakdown:	
Fee Park Parcels	7 Acres

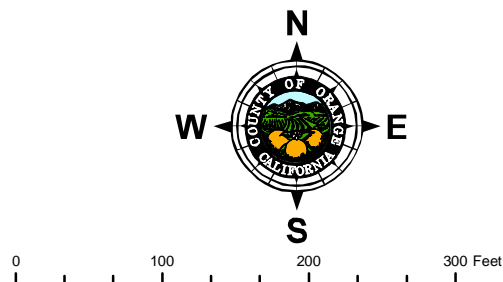
TOTAL ACRES	7 Acres

DESIGNED AND PRODUCED BY:
Resources & Development Management Department
GIS Mapping Unit
Philip Pappas

DATA SOURCE:
-Geomatics Land Information Systems Division
-Eagle Aerial Image 1 foot resolution, flown 4/19/2006

The County of Orange and Geomatics/LIS/GIS make no representations or warranties regarding the accuracy of the data from which this map was derived. Neither the County nor Geomatics/LIS/GIS shall be liable under any circumstances for any direct, indirect, special, incidental or consequential damages with respect to any claim by any user or any third party on account of or arising from the use of this map.

DATE: January 3, 2007



CRESCENT BAY POINT PARK

	Facility	Facility Parcel #	Uses	Acres	Constraints
FEE PARK PARCELS					
	Crescent Bay Point Park	101	FEE	1.39	
TOTAL ACRES:				1.39	
IOD PARCELS					
TOTAL ACRES:					
EASEMENT PARCELS					
TOTAL ACRES:					
LEASED PARCELS					
TOTAL ACRES:					
LOCAL PARKS					
TOTAL ACRES:					

CRESCENT BAY POINT PARK

	Facility	# of Parcels	Uses	Acres	Constraints
FEE PARK PARCELS					
	Crescent Bay Point Park	1	FEE	1.39	
TOTALS:		1		1.39	
IOD PARCELS					
TOTALS:					
EASEMENT PARCELS					
TOTALS:					
LEASED PARCELS					
TOTALS:					
LOCAL PARKS					
TOTALS:					

Crescent Bay Point Park

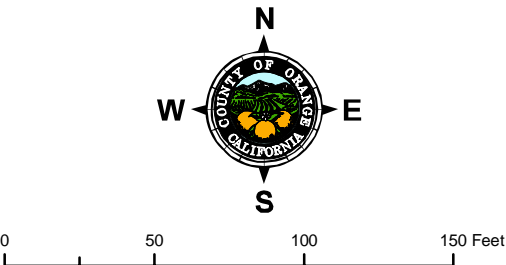


Fee Park Parcels

Total Acreage Breakdown:
Fee Park Parcels 1 Acre

TOTAL ACRES 1 Acre

DESIGNED AND PRODUCED BY: Resources & Development Management Department GIS Mapping Unit Philip Pappas
DATA SOURCE: -Geomatics Land Information Systems Division -Eagle Aerial Image 1 foot resolution, flown 4/18/2006
The County of Orange and Geomatics/LIS/GIS make no representations or warranties regarding the accuracy of the data from which this map was derived. Neither the County nor Geomatics/LIS/GIS shall be liable under any circumstances for any direct, indirect, special, incidental or consequential damages with respect to any claim by any user or any third party on account of or arising from the use of this map.
DATE: January 3, 2007



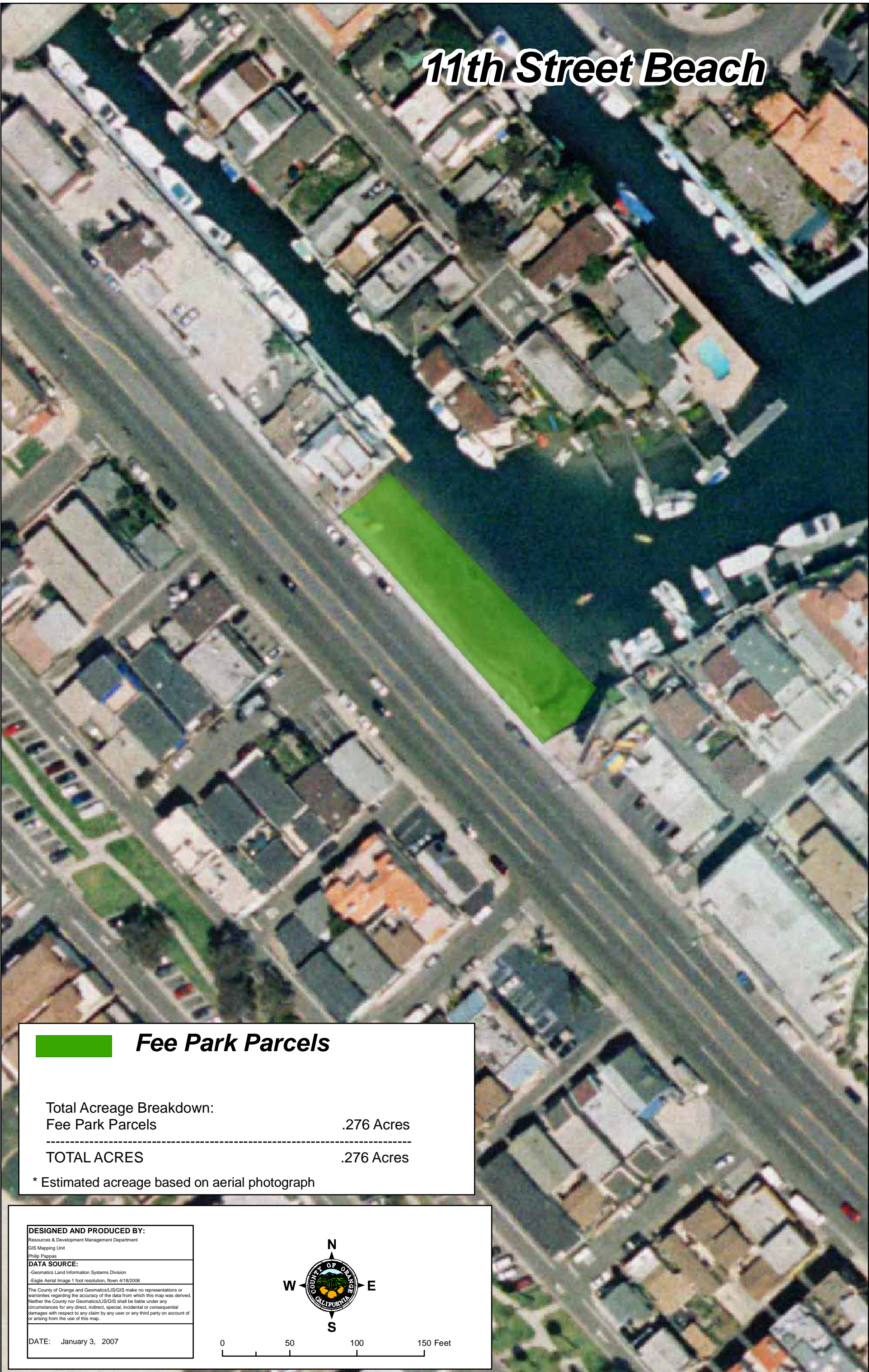
ELEVENTH STREET BEACH

	Facility	Facility Parcel #	Uses	Acres	Constraints
FEE PARK PARCELS					
	Eleventh Street Beach		FEE	5.03	
TOTAL ACRES:				5.03	
IOD PARCELS					
TOTAL ACRES:					
EASEMENT PARCELS					
TOTAL ACRES:					
LEASED PARCELS					
TOTAL ACRES:					
LOCAL PARKS					
TOTAL ACRES:					

ELEVENTH STREET BEACH

	Facility	# of Parcels	Uses	Acres	Constraints
FEE PARK PARCELS					
	Eleventh Street Beach	1	FEE	5.03	
TOTALS:		1		5.03	
IOD PARCELS					
TOTALS:					
EASEMENT PARCELS					
TOTALS:					
LEASED PARCELS					
TOTALS:					
LOCAL PARKS					
TOTALS:					

11th Street Beach



Fee Park Parcels

Total Acreage Breakdown:
Fee Park Parcels .276 Acres

TOTAL ACRES .276 Acres

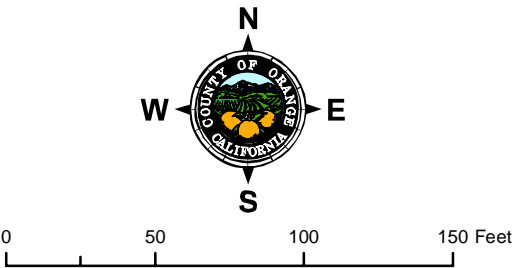
* Estimated acreage based on aerial photograph

DESIGNED AND PRODUCED BY:
Resources & Development Management Department
GIS Mapping Unit
Philip Pappas

DATA SOURCE:
-Geomatics Land Information Systems Division
-Eagle Aerial Image 1 foot resolution, flown 4/18/2006

The County of Orange and Geomatics/LIS/GIS make no representations or warranties regarding the accuracy of the data from which this map was derived. Neither the County nor Geomatics/LIS/GIS shall be liable under any circumstances for any direct, indirect, special, incidental or consequential damages with respect to any claim by any user or any third party on account of or arising from the use of this map.

DATE: January 3, 2007



NORTH STAR BEACH & MARINER'S BEACH

	Facility	Facility Parcel #	Uses	Acres	Constraints
FEE PARK PARCELS					
	North Star Beach		FEE	8.00	
	Mariner's Beach		FEE	3.66	
TOTAL ACRES:				11.66	
IOD PARCELS					
TOTAL ACRES:					
EASEMENT PARCELS					
TOTAL ACRES:					
LEASED PARCELS					
TOTAL ACRES:					
LOCAL PARKS					
TOTAL ACRES:					

NORTH STAR BEACH & MARINER'S BEACH

	Facility	# of Parcels	Uses	Acres	Constraints
FEE PARK PARCELS					
	North Star Beach	1	FEE	8.00	
	Mariner's Beach	1	FEE	3.66	
TOTALS:		2		11.66	
IOD PARCELS					
TOTALS:					
EASEMENT PARCELS					
TOTALS:					
LEASED PARCELS					
TOTALS:					
LOCAL PARKS					
TOTALS:					

North Star Beach & Mariner's Beach

North Star
Beach

Mariner's
Beach



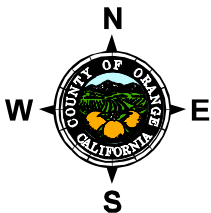
Fee Park Parcels

Total Acreage Breakdown:	
North Star Beach Fee Park Parcels	8 Acres
Mariner's Beach Fee Park Parcels	4 Acres

TOTAL ACRES 12 Acres

* Estimated acreage based on aerial photograph

DESIGNED AND PRODUCED BY: Resources & Development Management Department GIS Mapping Unit Philip Pappas
DATA SOURCE: -Geomatics Land Information Systems Division -Eagle Aerial Image 1 foot resolution, flown 4/18/2006
<small>The County of Orange and Geomatics/LIS/GIS make no representations or warranties regarding the accuracy of the data from which this map was derived. Neither the County nor Geomatics/LIS/GIS shall be liable under any circumstances for any direct, indirect, special, incidental or consequential damages with respect to any claim by any user or any third party on account of or arising from the use of this map.</small>
DATE: January 3, 2007



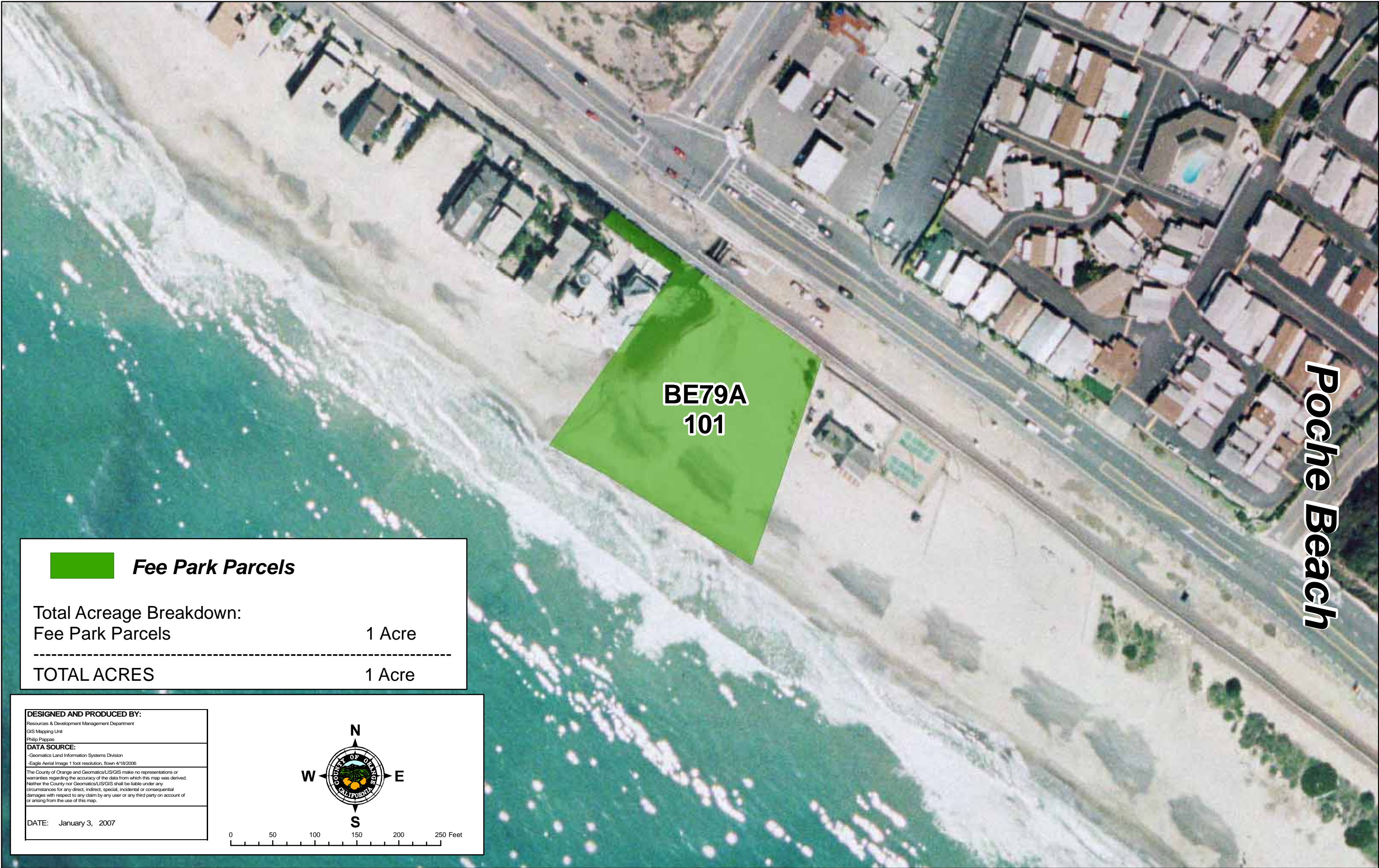
0 100 200 300 400 500 600 700 Feet

POCHE BEACH

	Facility	Facility Parcel #	Uses	Acres	Constraints
FEE PARK PARCELS					
	BE79A	101	FEE	1.48	
TOTAL ACRES:				1.48	
IOD PARCELS					
TOTAL ACRES:					
EASEMENT PARCELS					
TOTAL ACRES:					
LEASED PARCELS					
TOTAL ACRES:					
LOCAL PARKS					
TOTAL ACRES:					

POCHE BEACH

	Facility	# of Parcels	Uses	Acres	Constraints
FEE PARK PARCELS					
	BE79A	1	FEE	1.48	
TOTALS:		1		1.48	
IOD PARCELS					
TOTALS:					
EASEMENT PARCELS					
TOTALS:					
LEASED PARCELS					
TOTALS:					
LOCAL PARKS					
TOTALS:					



Poche Beach

BE79A
101



Fee Park Parcels

Total Acreage Breakdown:
Fee Park Parcels 1 Acre

TOTAL ACRES 1 Acre

DESIGNED AND PRODUCED BY:

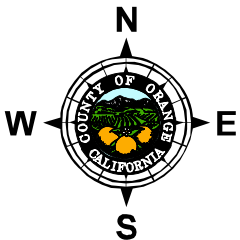
Resources & Development Management Department
GIS Mapping Unit
Philip Pappas

DATA SOURCE:

*Geomatics Land Information Systems Division
*Eagle Aerial Image 1 foot resolution, flown 4/18/2006

The County of Orange and Geomatics/LIS/GIS make no representations or warranties regarding the accuracy of the data from which this map was derived. Neither the County nor Geomatics/LIS/GIS shall be liable under any circumstances for any direct, indirect, special, incidental or consequential damages with respect to any claim by any user or any third party on account of or arising from the use of this map.

DATE: January 3, 2007



0 50 100 150 200 250 Feet

Salt Creek Beach County Park

Situated beneath scenic cliffs, Salt Creek Beach County Park includes a large sandy beach sheltered by rocky promontories. Above the beach is a small park with turf and picnic areas.

Location	Parking
In south Orange County within the City of Dana Point (Fifth Supervisorial District)	<ul style="list-style-type: none"> 463 spaces
Size	
40 acres	

Unique Features

- Food/beach equipment concession
- Surf and junior lifeguard camps
- Weddings and special events on the beach

Estimated Annual Attendance (Calendar Year – 2006)	Expenses (Fiscal Year 05/06)	Revenues (Fiscal Year 05/06)
2,096,201	\$937,641	\$487,839



SALT CREEK BEACH

	Facility	Facility Parcel #	Uses	Acres	Constraints
FEE PARK PARCELS					
	BE74Q	101	FEE	9.25	
	BE74Q	101.1	FEE	7.65	
	BE74Q	101.21	FEE	9.28	
	BE74Q	101.3	FEE	2.06	
	BE74Q	101.4	FEE	2.24	
	BE74Q	101.5	FEE	1.34	
	BE74Q	101.61	FEE	0.41	
	BE74Q	103.01	FEE	0.01	
	BE74Q	106	FEE	0.05	
	BE74Q	107	FEE	0.03	
	BE74Q	108	FEE	7.59	
TOTAL ACRES:				39.90	
IOD PARCELS					
	BE74Q	109	IOD	0.85	
	BE74Q	115	IOD	5.19	
	BE74Q	116	IOD	0.33	
TOTAL ACRES:				6.37	
EASEMENT PARCELS					
TOTAL ACRES:					
LEASED PARCELS					
TOTAL ACRES:					
LOCAL PARKS					
TOTAL ACRES:					

SALT CREEK BEACH

	Facility	# of Parcels	Uses	Acres	Constraints
FEE PARK PARCELS					
	BE74Q	11	FEE	39.90	
TOTALS:		11		39.90	
IOD PARCELS					
	BE74Q	3	IOD	6.37	
TOTALS:		3		6.37	
EASEMENT PARCELS					
TOTALS:					
LEASED PARCELS					
TOTALS:					
LOCAL PARKS					
TOTALS:					

Salt Creek Beach



Fee Park Parcels



IOD Parcels

Total Acreage Breakdown:

Fee Park Parcels

40 Acres

IOD Parcels

7 Acres

TOTAL ACRES

47 Acres

DESIGNED AND PRODUCED BY:

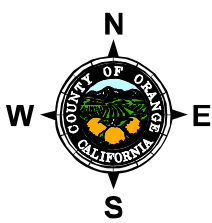
Resources & Development Management Department
GIS Mapping Unit
Philip Pappas

DATA SOURCE:

-Geomatics Land Information Systems Division
-Eagle Aerial Image 1 foot resolution, flown 4/18/2006

The County of Orange and Geomatics/LIS/GIS make no representations or warranties regarding the accuracy of the data from which this map was derived. Neither the County nor Geomatics/LIS/GIS shall be liable under any circumstances for any direct, indirect, special, incidental or consequential damages with respect to any claim by any user or any third party on account of or arising from the use of this map.

DATE: January 3, 2007



0 300 600 900 1,200 Feet

SANTA ANA RIVER MOUTH BEACH

	Facility	Facility Parcel #	Uses	Acres	Constraints
FEE PARK PARCELS					
	Santa Ana River Mouth Beach		FEE	5.14	
TOTAL ACRES:				5.14	
IOD PARCELS					
TOTAL ACRES:					
EASEMENT PARCELS					
TOTAL ACRES:					
LEASED PARCELS					
TOTAL ACRES:					
LOCAL PARKS					
TOTAL ACRES:					

SANTA ANA RIVER MOUTH BEACH

	Facility	# of Parcels	Uses	Acres	Constraints
FEE PARK PARCELS					
	Santa Ana River Mouth Beach	1	FEE	5.14	
TOTALS:		1		5.14	
IOD PARCELS					
TOTALS:					
EASEMENT PARCELS					
TOTALS:					
LEASED PARCELS					
TOTALS:					
LOCAL PARKS					
TOTALS:					

Santa Ana River Mouth Beach

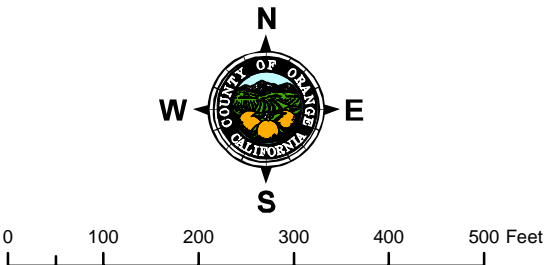


Fee Park Parcels

Total Acreage Breakdown:	
Fee Park Parcels	5 Acres
<hr/>	
TOTAL ACRES	5 Acres

* Estimated acreage based on aerial photograph

DESIGNED AND PRODUCED BY: Resources & Development Management Department GIS Mapping Unit Philip Pappas
DATA SOURCE: -Geomatics Land Information Systems Division -Eagle Aerial Image 1 foot resolution, flown 4/18/2006
<small>The County of Orange and Geomatics/LIS/GIS make no representations or warranties regarding the accuracy of the data from which this map was derived. Neither the County nor Geomatics/LIS/GIS shall be liable under any circumstances for any direct, indirect, special, incidental or consequential damages with respect to any claim by any user or any third party on account of or arising from the use of this map.</small>
DATE: January 3, 2007



Sunset Beach

Situated adjacent to the Sunset Beach community, Sunset Beach offers a wide stretch of sandy beach.

Location	Parking
In west Orange County within unincorporated County territory (Second Supervisorial District)	<ul style="list-style-type: none"> No dedicated parking
Size	
48 acres	

Unique Features

- Surf and junior lifeguard camps

Estimated Annual Attendance (Calendar Year – 2006)	Expenses (Fiscal Year 05/06)	Revenues (Fiscal Year 05/06)
350,135	\$179,096	\$5,000

Park-involved Organizations

- Sunset Beach Community Association

SUNSET BEACH

	Facility	Facility Parcel #	Uses	Acres	Constraints
FEE PARK PARCELS					
	BE35A	101	FEE	48.10	
TOTAL ACRES:					
IOD PARCELS					
TOTAL ACRES:					
EASEMENT PARCELS					
TOTAL ACRES:					
LEASED PARCELS					
TOTAL ACRES:					
LOCAL PARKS					
TOTAL ACRES:					

SUNSET BEACH

	Facility	# of Parcels	Uses	Acres	Constraints
FEE PARK PARCELS					
	BE35A	1	FEE	48.10	
TOTALS:		1		48.10	
IOD PARCELS					
TOTALS:					
EASEMENT PARCELS					
TOTALS:					
LEASED PARCELS					
TOTALS:					
LOCAL PARKS					
TOTALS:					

Sunset Beach

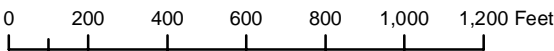
BE35A
101



Fee Park Parcels

Total Acreage Breakdown:	
Fee Park Parcels	48 Acres
<hr/>	
TOTAL ACRES	48 Acres

DESIGNED AND PRODUCED BY: Resources & Development Management Department GIS Mapping Unit Philip Pappas
DATA SOURCE: -Geomatics Land Information Systems Division -Eagle Aerial Image 1 foot resolution, flown 4/18/2006
<small>The County of Orange and Geomatics/LIS/GIS make no representations or warranties regarding the accuracy of the data from which this map was derived. Neither the County nor Geomatics/LIS/GIS shall be liable under any circumstances for any direct, indirect, special, incidental or consequential damages with respect to any claim by any user or any third party on account of or arising from the use of this map.</small>
DATE: January 3, 2007



SUNSET HARBOR

	Facility	Facility Parcel #	Uses	Acres	Constraints
FEE PARK PARCELS					
	PR26A	101	FEE	19.23	
	PR26A	101	FEE	44.07	
TOTAL ACRES:				63.30	
IOD PARCELS					
TOTAL ACRES:					
EASEMENT PARCELS					
TOTAL ACRES:					
LEASED PARCELS					
TOTAL ACRES:					
LOCAL PARKS					
TOTAL ACRES:					

SUNSET HARBOR

	Facility	# of Parcels	Uses	Acres	Constraints
FEE PARK PARCELS					
	PR26A	2	FEE	63.30	
TOTALS:		2		63.30	
IOD PARCELS					
TOTALS:					
EASEMENT PARCELS					
TOTALS:					
LEASED PARCELS					
TOTALS:					
LOCAL PARKS					
TOTALS:					

Sunset Harbor

PR26A
101

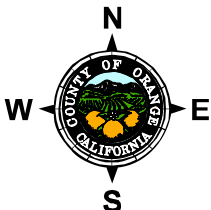
PR26A
101



Fee Park Parcels

Total Acreage Breakdown:	
Fee Park Parcels	63 Acres
<hr/>	
TOTAL ACRES	63 Acres

DESIGNED AND PRODUCED BY: Resources & Development Management Department GIS Mapping Unit Philip Pappas
DATA SOURCE: -Geomatics Land Information Systems Division -Eagle Aerial Image 1 foot resolution, flown 4/18/2006
<small>The County of Orange and Geomatics/LIS/GIS make no representations or warranties regarding the accuracy of the data from which this map was derived. Neither the County nor Geomatics/LIS/GIS shall be liable under any circumstances for any direct, indirect, special, incidental or consequential damages with respect to any claim by any user or any third party on account of or arising from the use of this map.</small>
DATE: January 3, 2007



0 200 400 600 800 1,000 1,200 Feet

TABLE ROCK BEACH

	Facility	Facility Parcel #	Uses	Acres	Constraints
FEE PARK PARCELS					
	Table Rock Beach		FEE	0.75	
	Table Rock Beach		FEE	0.04	
TOTAL ACRES:				0.79	
IOD PARCELS					
TOTAL ACRES:					
EASEMENT PARCELS					
	Table Rock Beach	BE74M 110	Esmt (Pedestrian Access)	0.09	
	Table Rock Beach	BE74M 128	Esmt (Pedestrian Access)	0.11	
TOTAL ACRES:				0.20	
LEASED PARCELS					
TOTAL ACRES:					
LOCAL PARKS					
TOTAL ACRES:					

TABLE ROCK BEACH

	Facility	# of Parcels	Uses	Acres	Constraints
FEE PARK PARCELS					
	Table Rock Beach	2	FEE	0.79	
TOTALS:		2		0.79	
IOD PARCELS					
TOTALS:					
EASEMENT PARCELS					
	Table Rock Beach	2	Esmt (Pedestrian Access)	0.20	
TOTALS:		2		0.20	
LEASED PARCELS					
TOTALS:					
LOCAL PARKS					
TOTALS:					

Table Rock Beach

BE74M
111

BE74M
128



Fee Park Parcels



Easement Parcels

Total Acreage Breakdown:

Fee Park Parcels	.79 Acres
Easement Parcels	.20 Acres

TOTAL ACRES 1 Acre

* Estimated acreage based on aerial photograph

DESIGNED AND PRODUCED BY:

Resources & Development Management Department

GIS Mapping Unit

Philip Pappas

DATA SOURCE:

-Geomatics Land Information Systems Division

-Eagle Aerial Image 1 foot resolution, flown 4/18/2006

The County of Orange and Geomatics/LIS/GIS make no representations or warranties regarding the accuracy of the data from which this map was derived. Neither the County nor Geomatics/LIS/GIS shall be liable under any circumstances with respect to any direct, indirect, special, incidental or consequential damages with respect to any claim by any user or any third party on account of or arising from the use of this map.

DATE: January 3, 2007



0 50 100 150 Feet

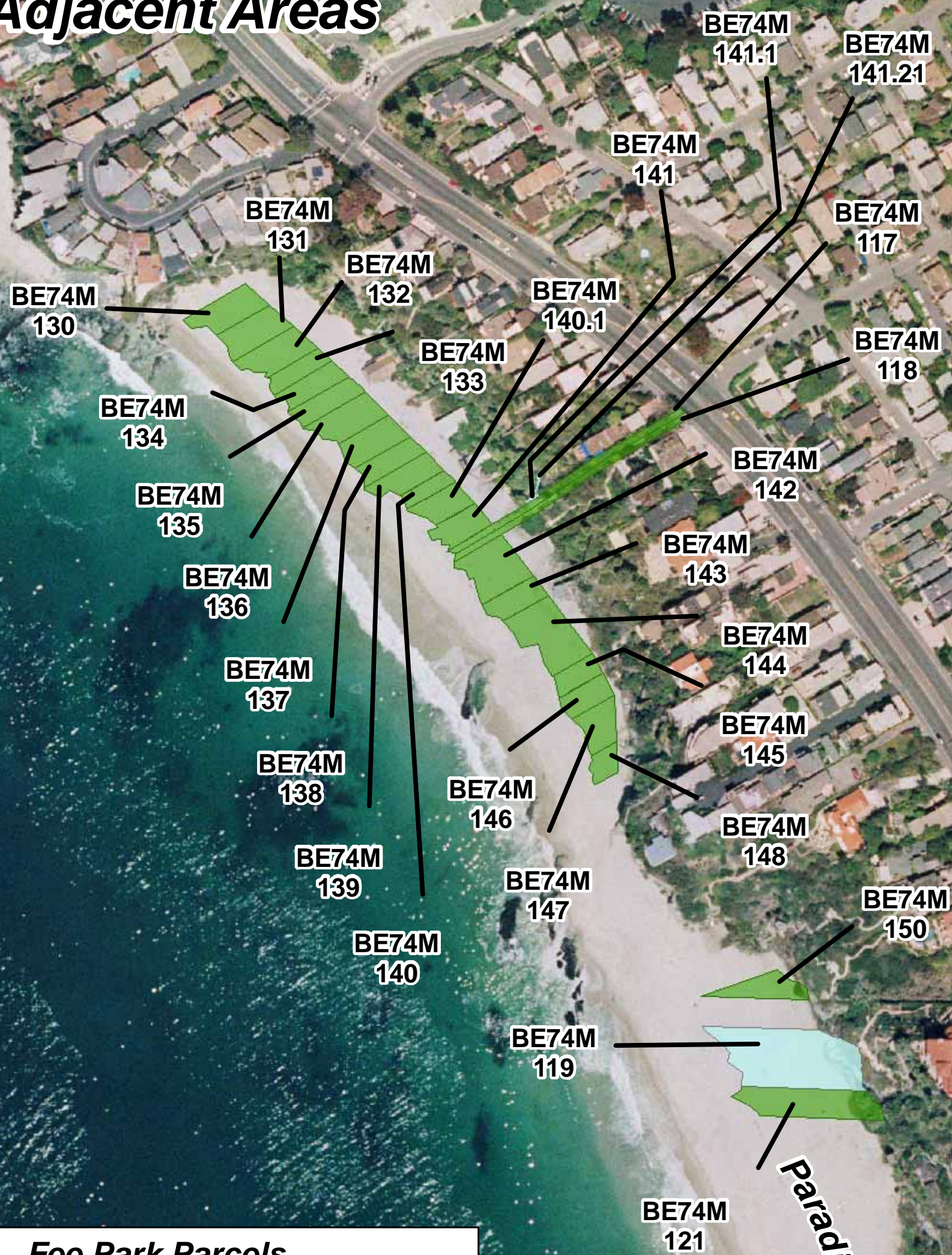
THOUSAND STEPS BEACH

	Facility	Facility Parcel #	Uses	Acres	Constraints
FEE PARK PARCELS					
	BE74M	117		0.09	
	BE74M	118		0.09	
	BE74M	121		0.20	
	BE74M	130		0.10	
	BE74M	131		0.10	
	BE74M	132		0.10	
	BE74M	133		0.06	
	BE74M	134		0.07	
	BE74M	135		0.08	
	BE74M	136		0.10	
	BE74M	137		0.09	
	BE74M	138		0.07	
	BE74M	139		0.08	
	BE74M	140		0.04	
	BE74M	140.1		0.07	
	BE74M	141		0.07	
	BE74M	142		0.14	
	BE74M	143		0.07	
	BE74M	144		0.17	
	BE74M	145		0.05	
	BE74M	146		0.06	
	BE74M	147		0.08	
	BE74M	148		0.04	
	BE74M	150		0.08	
TOTAL ACRES:				2.10	
IOD PARCELS					
TOTAL ACRES:					
EASEMENT PARCELS					
	BE74M	119	Esmt (Resource Preservation)	0.38	
	BE74M	141.1	Esmt (Pedestrian Access)	0.00	
	BE74M	141.21	Esmt (Pedestrian Access)	0.00	
TOTAL ACRES:				0.39	
LEASED PARCELS					
TOTAL ACRES:					
LOCAL PARKS					
TOTAL ACRES:					

THOUSAND STEPS BEACH

	Facility	# of Parcels	Uses	Acres	Constraints
FEE PARK PARCELS					
	BE74M	24	FEE	2.10	
TOTALS:		24		2.10	
IOD PARCELS					
TOTALS:					
EASEMENT PARCELS					
	BE74M	3	Esmt (Resource Preservation), Esmt (Pedestrian Access)	0.39	
TOTALS:		3		0.39	
LEASED PARCELS					
TOTALS:					
LOCAL PARKS					
TOTALS:					

Thousand Steps Beach & Adjacent Areas

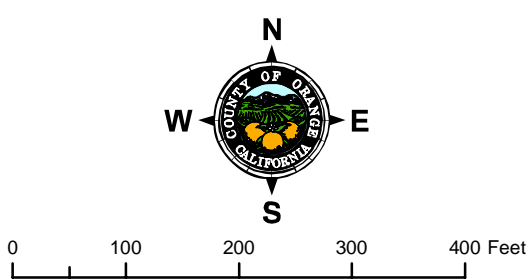


DESIGNED AND PRODUCED BY:
Resources & Development Management Department
GIS Mapping Unit
Philip Pappas

DATA SOURCE:
-Geomatics Land Information Systems Division
-Eagle Aerial Image 1 foot resolution, flown 4/18/2006

The County of Orange and Geomatics/LIS/GIS make no representations or warranties regarding the accuracy of the data from which this map was derived. Neither the County nor Geomatics/LIS/GIS shall be liable under any circumstances for any direct, indirect, special, incidental or consequential damages with respect to any claim by any user or any third party on account of or arising from the use of this map.

DATE: January 3, 2007



THREE ARCH BAY BEACH

	Facility	Facility Parcel #	Uses	Acres	Constraints
FEE PARK PARCELS					
	BE74L	101.01	FEE	0.23	
TOTAL ACRES:				0.23	
IOD PARCELS					
TOTAL ACRES:					
EASEMENT PARCELS					
	BE74L	102	Esmt (Pedestrian Access)	0.02	
TOTAL ACRES:				0.02	
LEASED PARCELS					
TOTAL ACRES:					
LOCAL PARKS					
TOTAL ACRES:					

THREE ARCH BAY BEACH

	Facility	# of Parcels	Uses	Acres	Constraints
FEE PARK PARCELS					
	BE74L	1	FEE	0.23	
TOTALS:		1		0.23	
IOD PARCELS					
TOTALS:					
EASEMENT PARCELS					
	BE74L	1	Esmt (Pedestrian Access)	0.02	
TOTALS:		1		0.02	
LEASED PARCELS					
TOTALS:					
LOCAL PARKS					
TOTALS:					

Three Arch Bay Beach

BE74L
102

BE74L
101.01



Fee Park Parcels



Easement Parcels

Total Acreage Breakdown:

Fee Park Parcels	.23 Acres
Easement Parcels	.02 Acres

TOTAL ACRES .25 Acres

* Does not contain lateral access easements

DESIGNED AND PRODUCED BY:

Resources & Development Management Department

GIS Mapping Unit

Philip Pappas

DATA SOURCE:

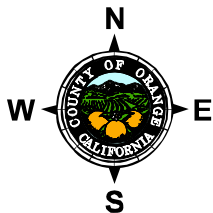
-Geomatics Land Information Systems Division

-Eagle Aerial Image 1 foot resolution, flown 4/18/2006

The County of Orange and Geomatics/LIS/GIS make no representations or

warranties regarding the accuracy of the data from which this map was derived. Neither the County nor Geomatics/LIS/GIS shall be liable under any circumstances for any direct, indirect, special, incidental or consequential damages with respect to any claim by any user or any third party on account of or arising from the use of this map.

DATE: January 3, 2007



0 100 200 300 Feet

TOTUAVA BAY BEACH

	Facility	Facility Parcel #	Uses	Acres	Constraints
FEE PARK PARCELS					
TOTAL ACRES:					
IOD PARCELS					
TOTAL ACRES:					
EASEMENT PARCELS					
	BE74M	127	Esmt (Resource Preservation)	0.03	
	BE74M	127.1	Esmt (Pedestrian Access)	0.00	
	BE74M	127.2	Esmt (Pedestrian Access)	0.09	
	BE74M	158	Esmt (Pedestrian Access)	0.04	
TOTAL ACRES:				0.16	
LEASED PARCELS					
TOTAL ACRES:					
LOCAL PARKS					
TOTAL ACRES:					

TOTUAVA BAY BEACH

	Facility	# of Parcels	Uses	Acres	Constraints
FEE PARK PARCELS					
TOTALS:					
IOD PARCELS					
TOTALS:					
EASEMENT PARCELS					
	BE74M	4	Esmt (Resource Preservation), Esmt (Pedestrian Access)	0.16	
TOTALS:		4		0.16	
LEASED PARCELS					
TOTALS:					
LOCAL PARKS					
TOTALS:					

Totuava Bay Beach

BE74M
158

BE74M
127.2

BE74M
127

BE74M
127.1

Easement Parcels

Total Acreage Breakdown:
Easement Parcels .16 Acres

TOTAL ACRES .16 Acres

* Does not contain lateral access easements

DESIGNED AND PRODUCED BY:

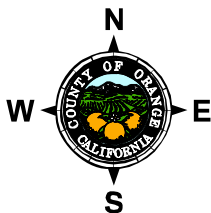
Resources & Development Management Department
GIS Mapping Unit
Philip Pappas

DATA SOURCE:

-Geomatics Land Information Systems Division
-Eagle Aerial Image 1 foot resolution, flown 4/18/2006

The County of Orange and Geomatics/LIS/GIS make no representations or warranties regarding the accuracy of the data from which this map was derived. Neither the County nor Geomatics/LIS/GIS shall be liable under any circumstances for any direct, indirect, special, incidental or consequential damages with respect to any claim by any user or any third party on account of or arising from the use of this map.

DATE: January 3, 2007



0 50 100 150 200 250 Feet