

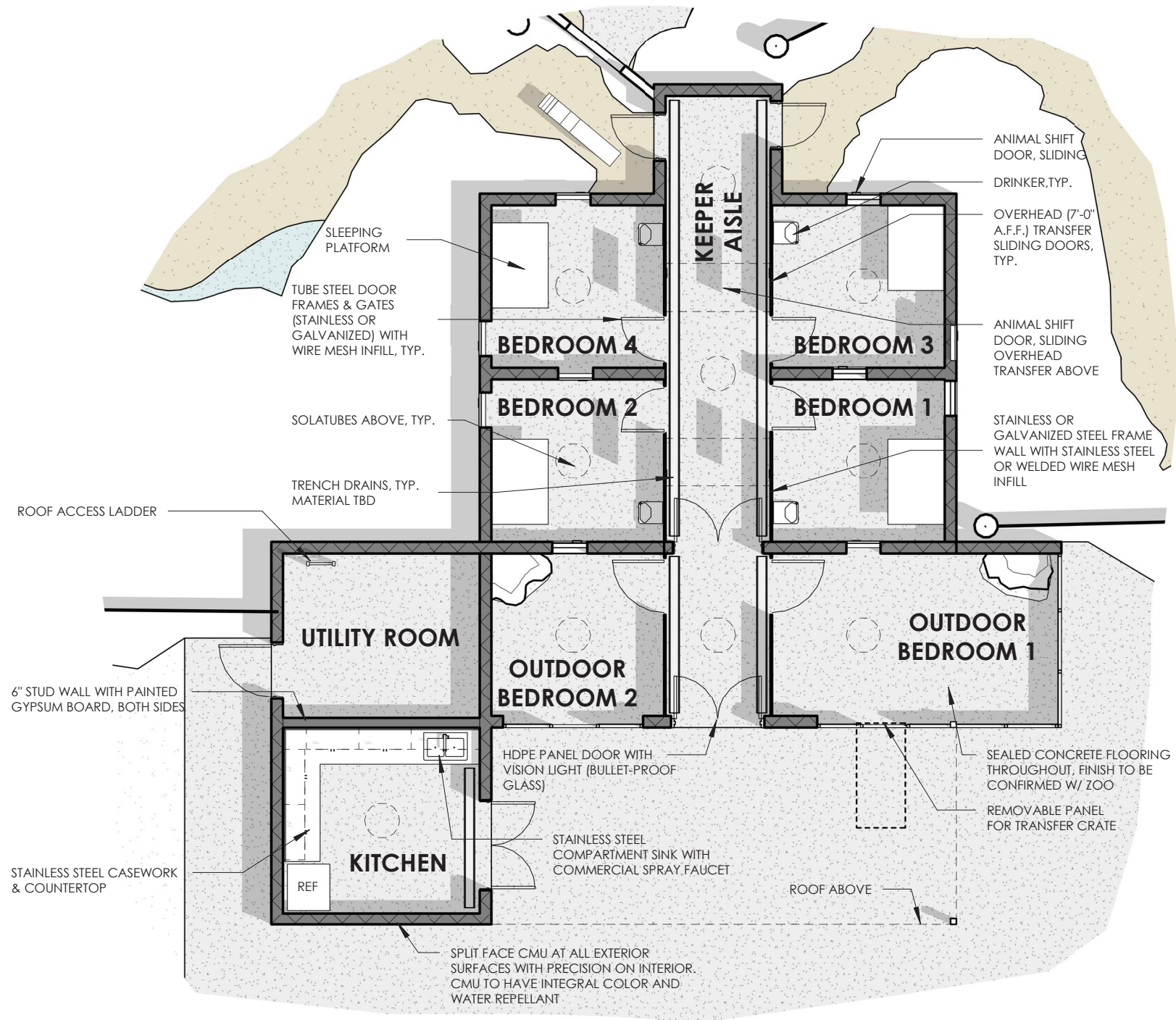


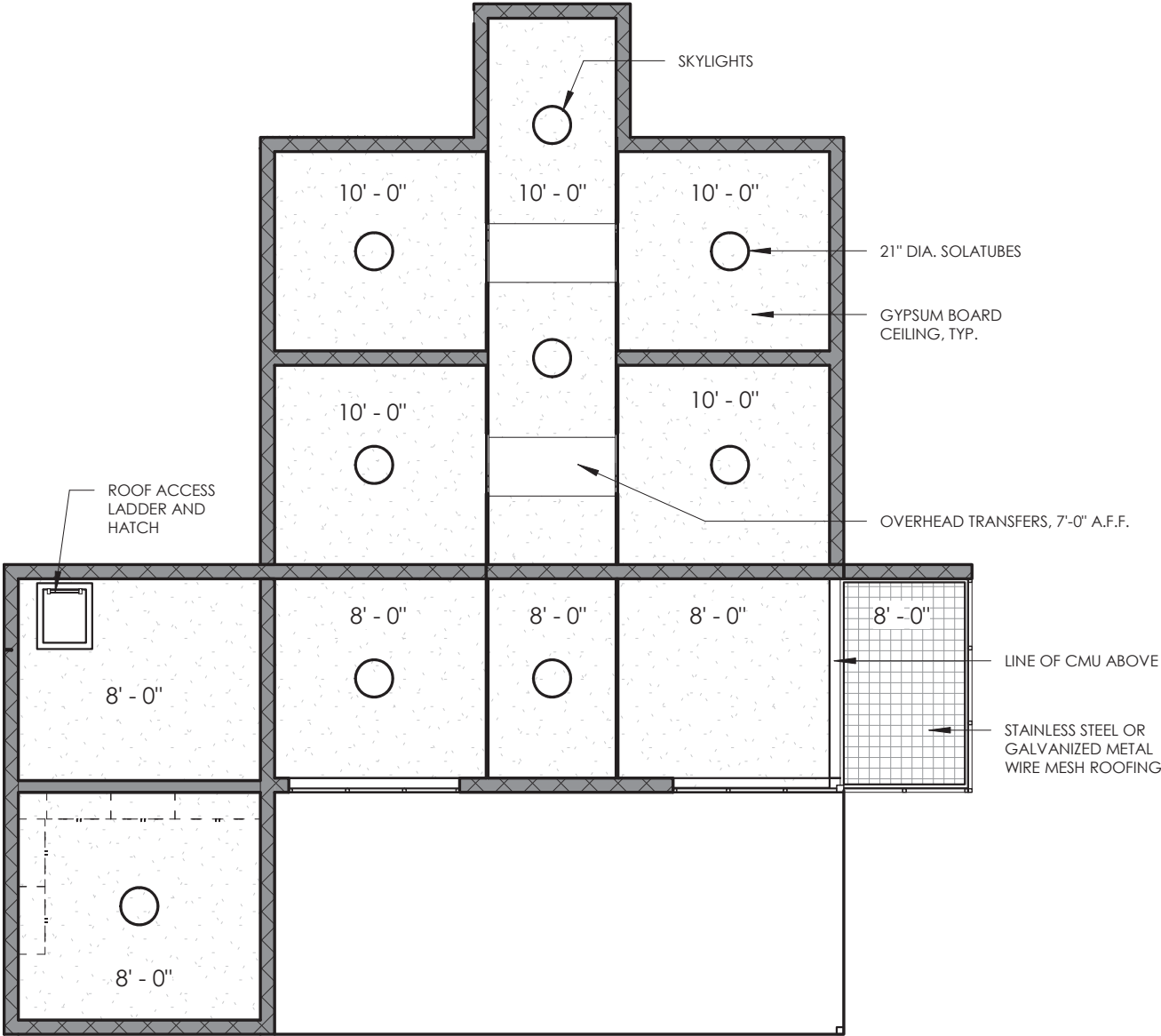


LEGEND

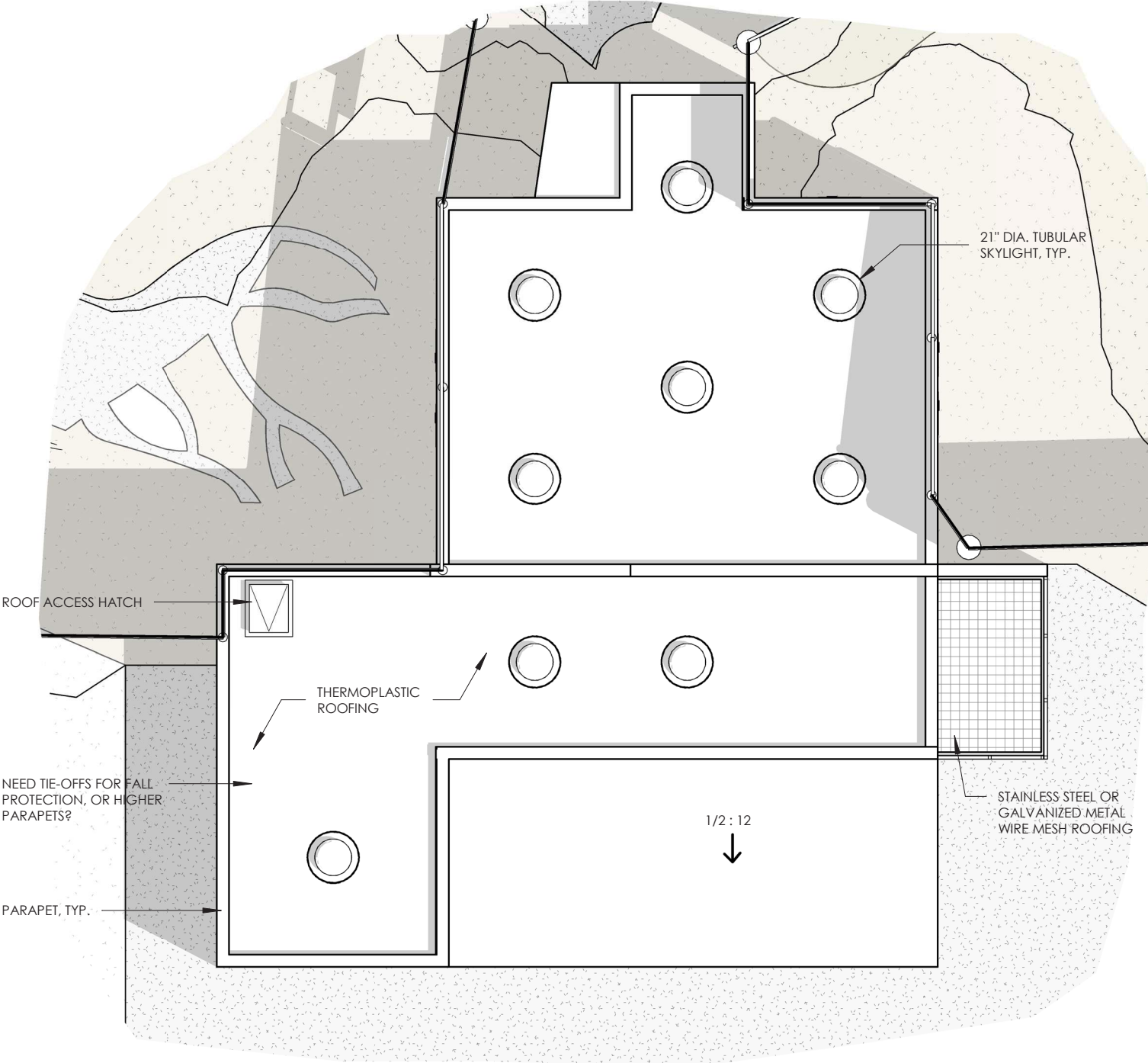
- 1 ENLARGED ENTRY AREA
- 2 POTENTIAL 'TEASER FEATURE' INTO NEW EXHIBIT AREA
- 3 POTENTIAL (VALUE ADD) EXPANDED WATER FEATURE INSIDE & OUTSIDE OF HABITAT
- 4 CONNECTION TO FUTURE NEW EXHIBIT OR ZOO EXPANSION
- 5 VIEWING WINDOW INTO DEN(S)
- 6 AUXILIARY OUTDOOR HOLDING
- 7 HABITAT RIDGE DISPLAYING & EDUCATING GUESTS ON REGIONAL GEOLOGY, FLORA AND FAUNA
- 8 TRAINING WALL & VISITOR SEATING (VALUE ADD)
- 9 PRIMARY LOG BRIDGE
- 10 SECONDARY BRIDGE FOR ANIMAL TRANSFER (VALUE ADD)
- 11 'UP CLOSE' GLASS WINDOW VIEWING AND INFORMATION PANELS
- 12 DESIGNATED KEEPER PATH THROUGH LANDSCAPING, TYP.
- 13 RAILING WITH READER RAIL





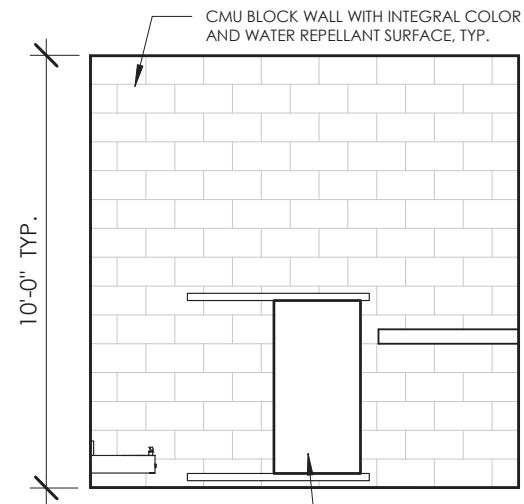
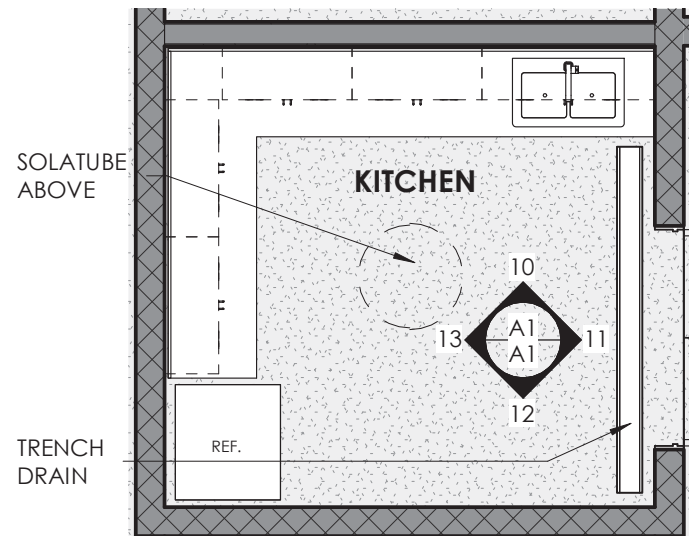
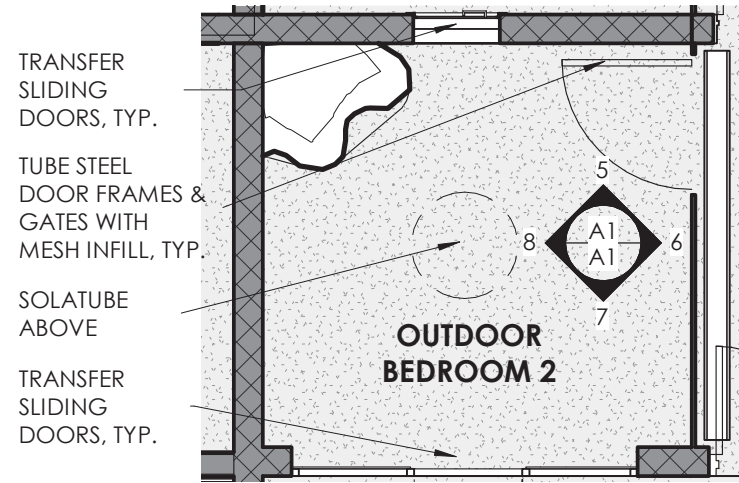
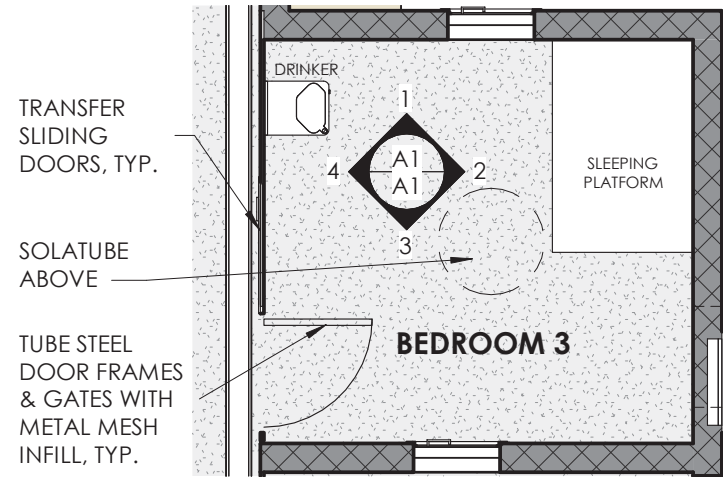


REFLECTED CEILING PLAN

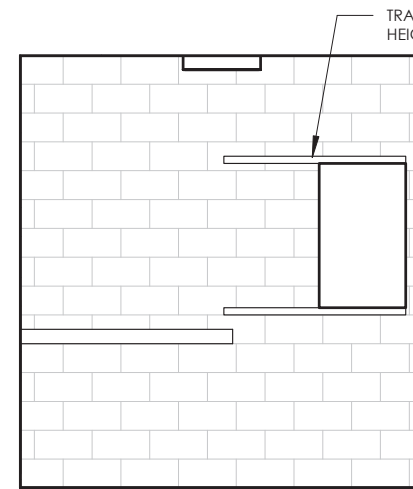


ROOF PLAN

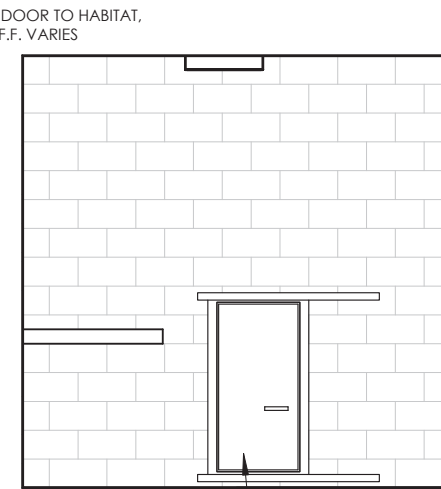




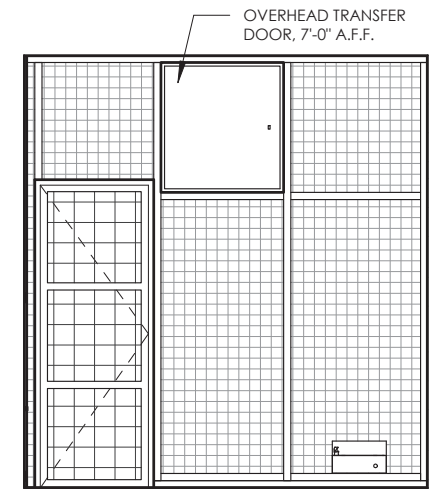
①



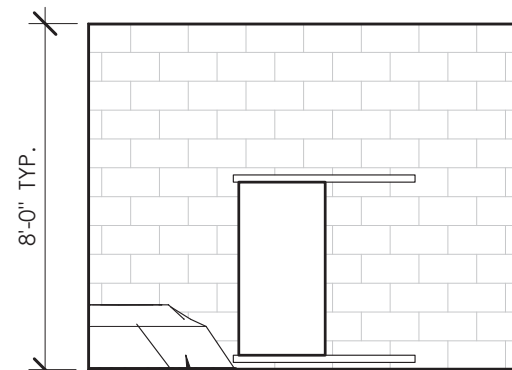
②



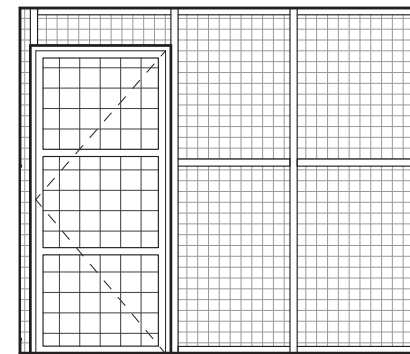
③



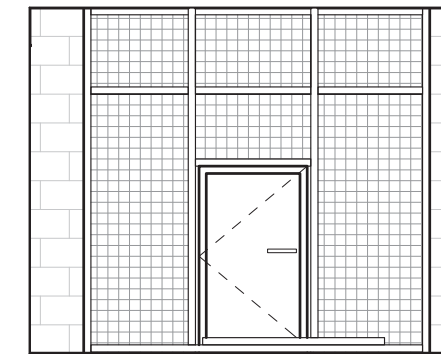
④



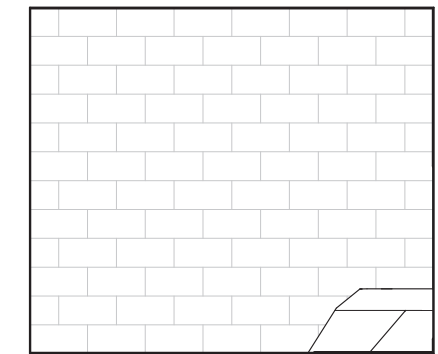
⑤



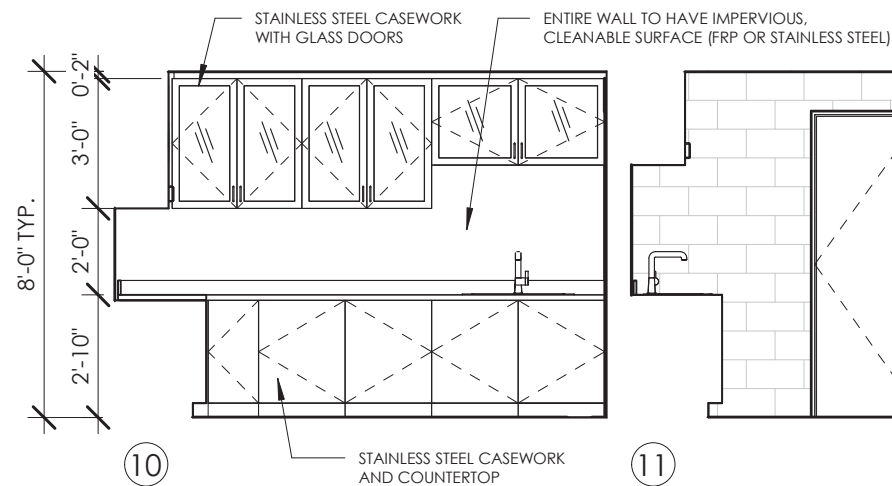
⑥



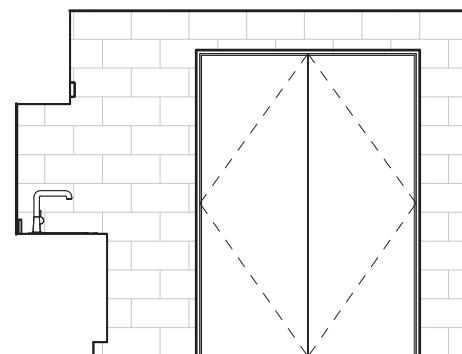
⑦



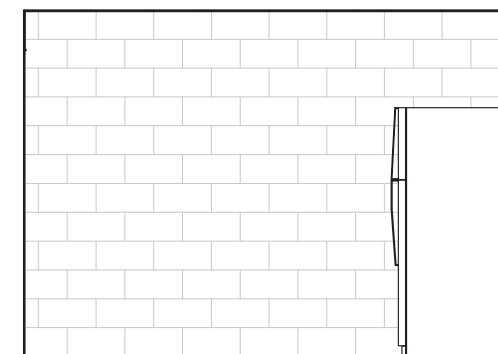
⑧



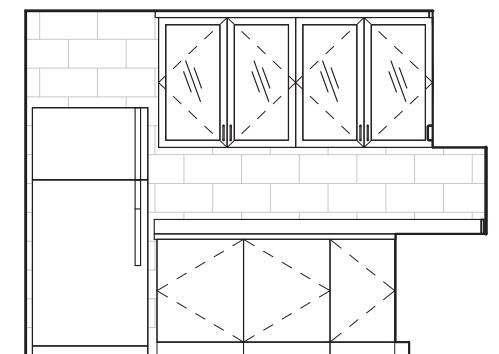
⑩



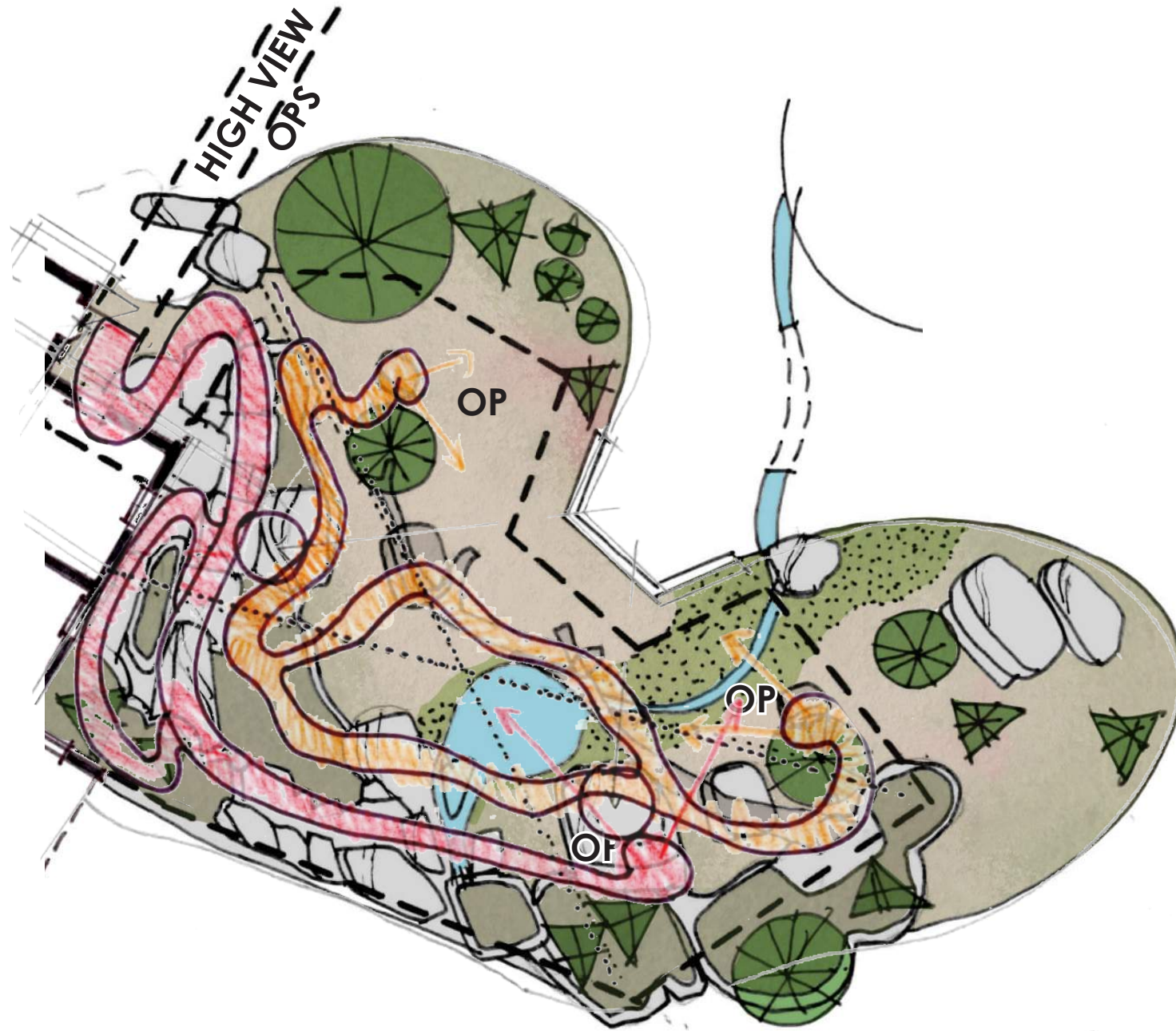
⑪





⑫



⑬



ELEVATED PATHWAY LEGEND

-  MIDDLE PATH
-  HIGH PATH
- OP OBSERVATION POINTS

MOVEMENT MODALITIES

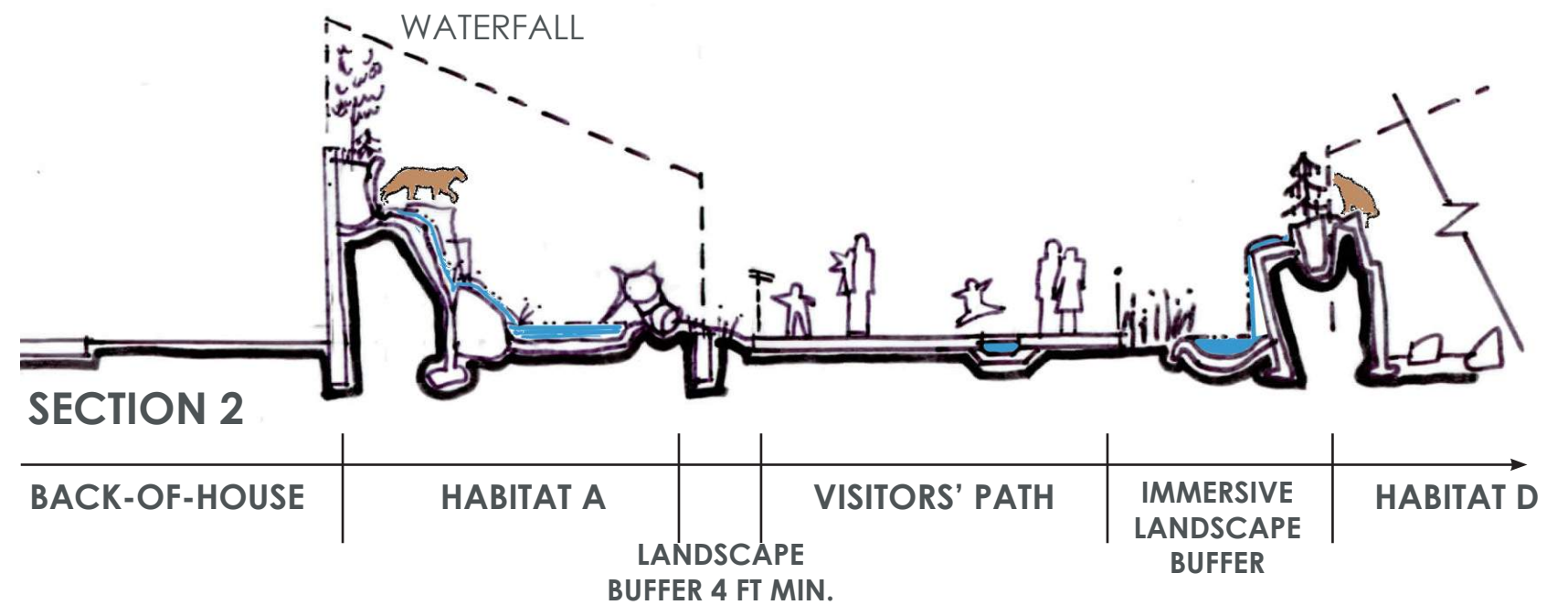
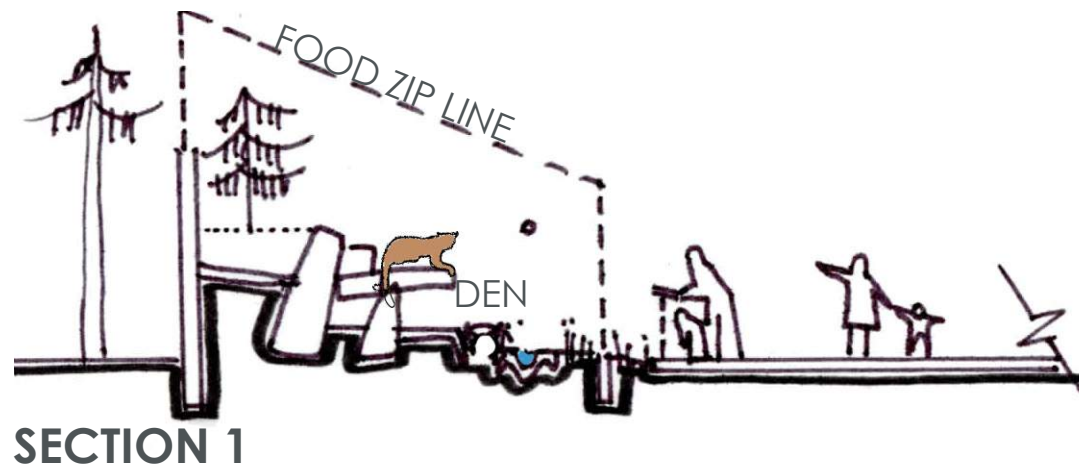
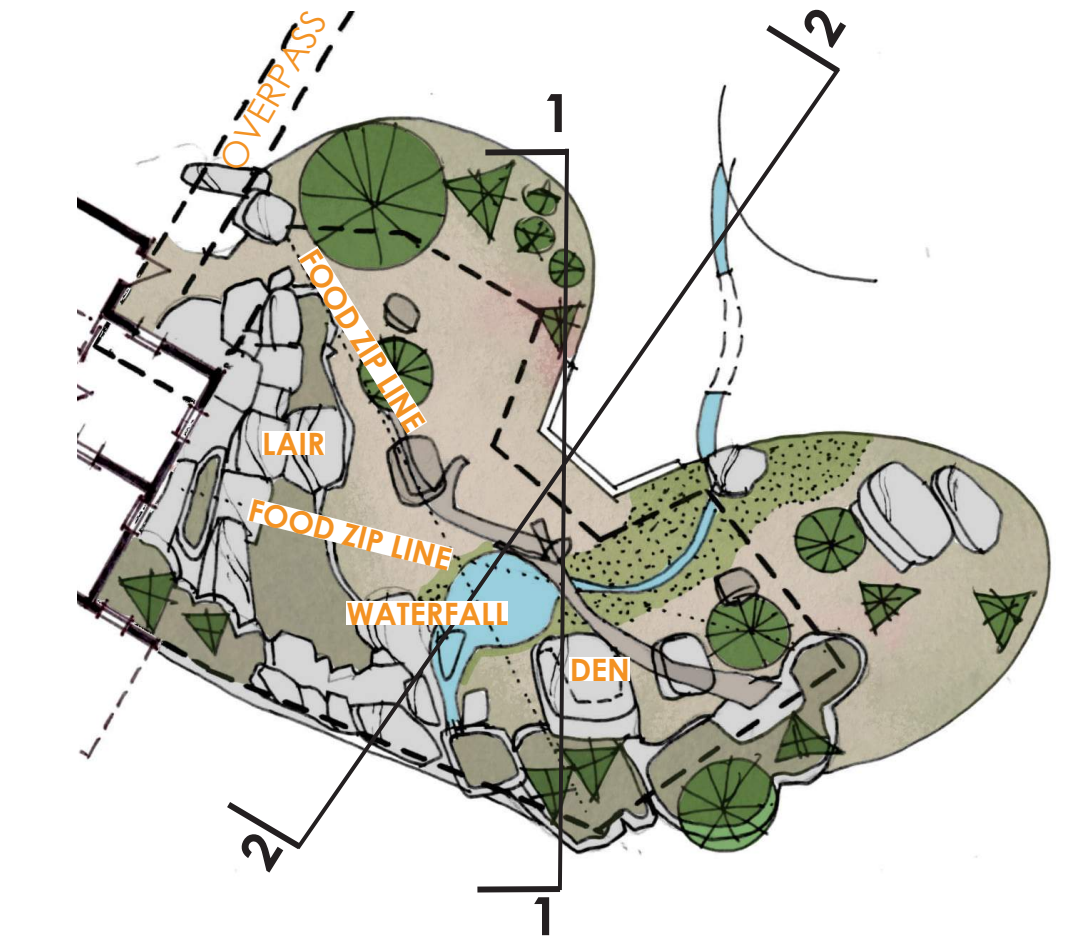
- INTERLINKED, ELEVATED PATHS
- USE OF ROCKS AND DEADFALL TO PROVIDE MOUNTAIN LIONS WITH AN ELEVATED VIEW OF THEIR LANDSCAPE
- ENVIRONMENTAL ENRICHMENT

NOTE:

ELEVATIONS AND PLACEMENT OF ALL ENVIRONMENTAL AND ENRICHMENT ITEMS WILL NEED TO BE COORDINATED AND DEVELOPED WITH THE ZOO TEAM AND CEMROCK

EXHIBIT ELEMENTS

- IMMERSIVE LANDSCAPE - SEAMLESS TRANSITION FROM VISITOR AREA TO HABITAT ENCLOSURE
- OLD GROWTH TREES BEHIND EXHIBIT
- ELEVATED PLANTERS AT TOP OF ROCKWORK, REVIEW FOR IRRIGATION AND TYPE OF PLANTS
- FOOD ZIP LINE: CONTINUOUS LINE CONTROLLED FROM THE OUTSIDE OF THE ANIMAL AREA THAT CAN BE USED TO POSITION HEAVY ANIMAL TREATS OR ATTRACTIONS FOR THE ANIMALS, OR THE ANIMALS CAN BE ALLOWED TO DRAG THE TREAT ALONG FOR THE LENGTH OF THE LINE.
- ROCK TOWER TO HELP HIDE HOLDING BUILDING
- STREAM AND DESERT RIPARIAN LANDSCAPE
- HIDDEN HOLDING BUILDING
- ENTRANCES TO ANIMAL BEDROOMS AT VARYING LEVELS, AS CREVASSES IN ROCK

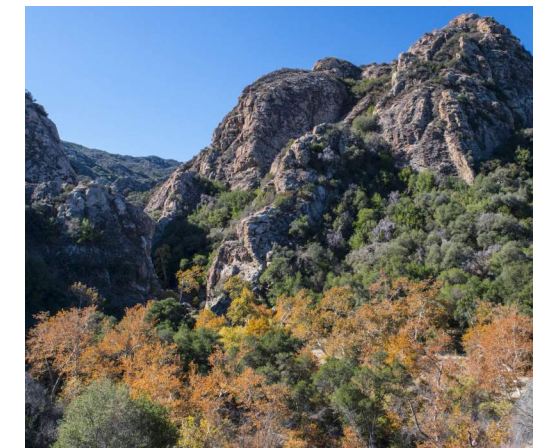
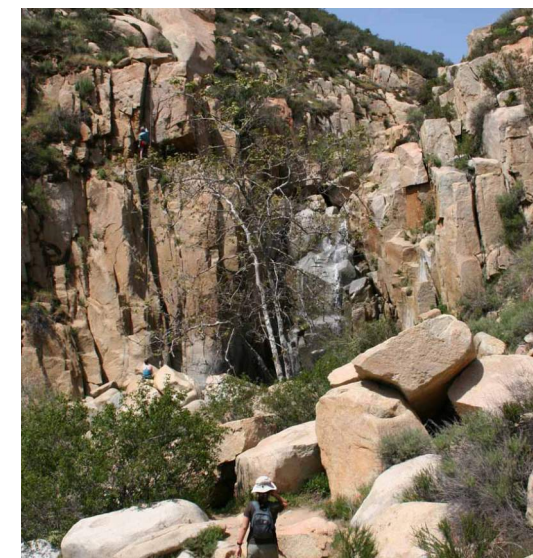


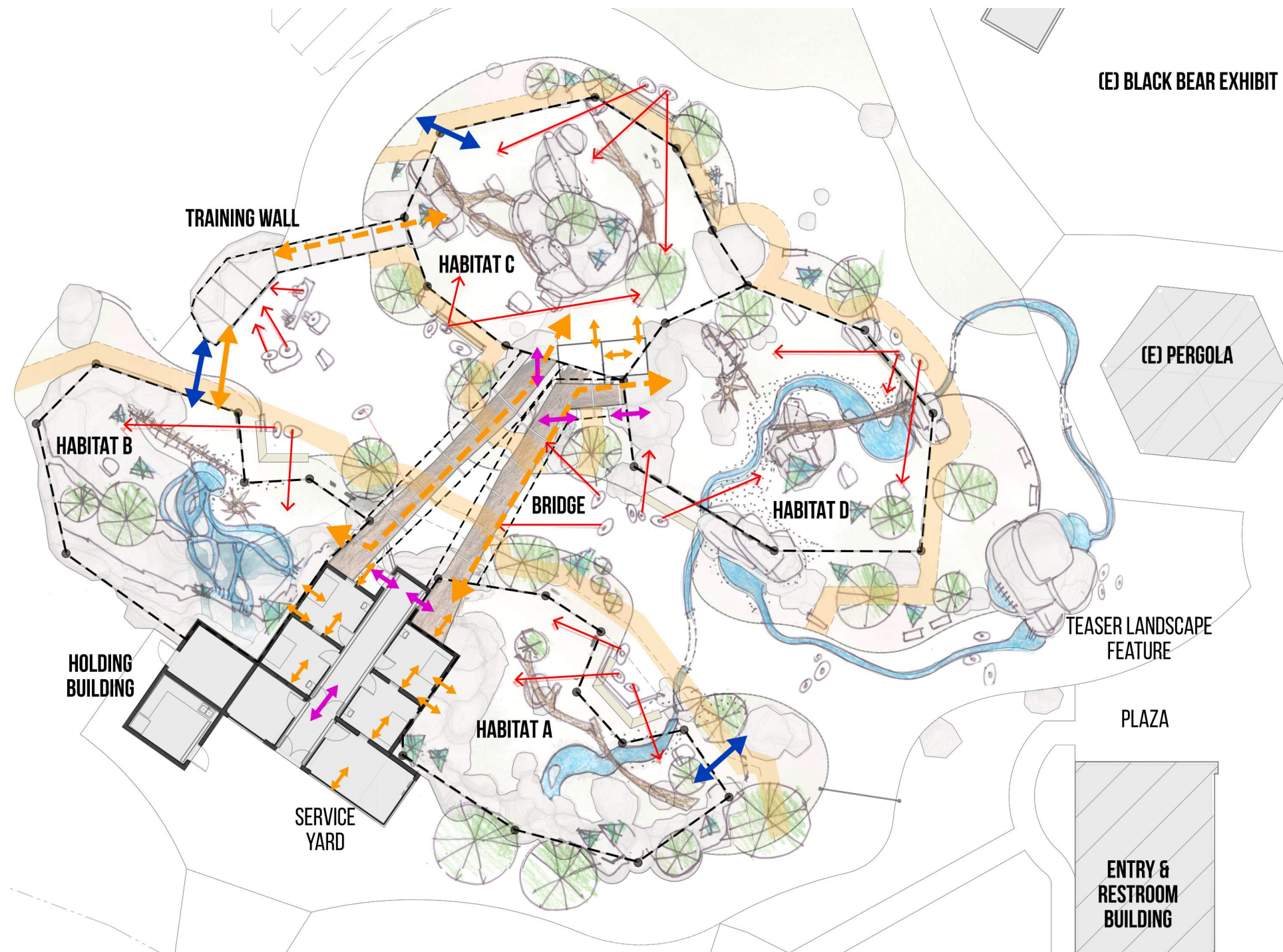


LEGEND

-  DECOMPOSED GRANITE
-  GROUND COVER/GRASS
-  BUSHES AND WILDFLOWERS
-  NEW TREES
-  EXISTING TREES

INSPIRATION

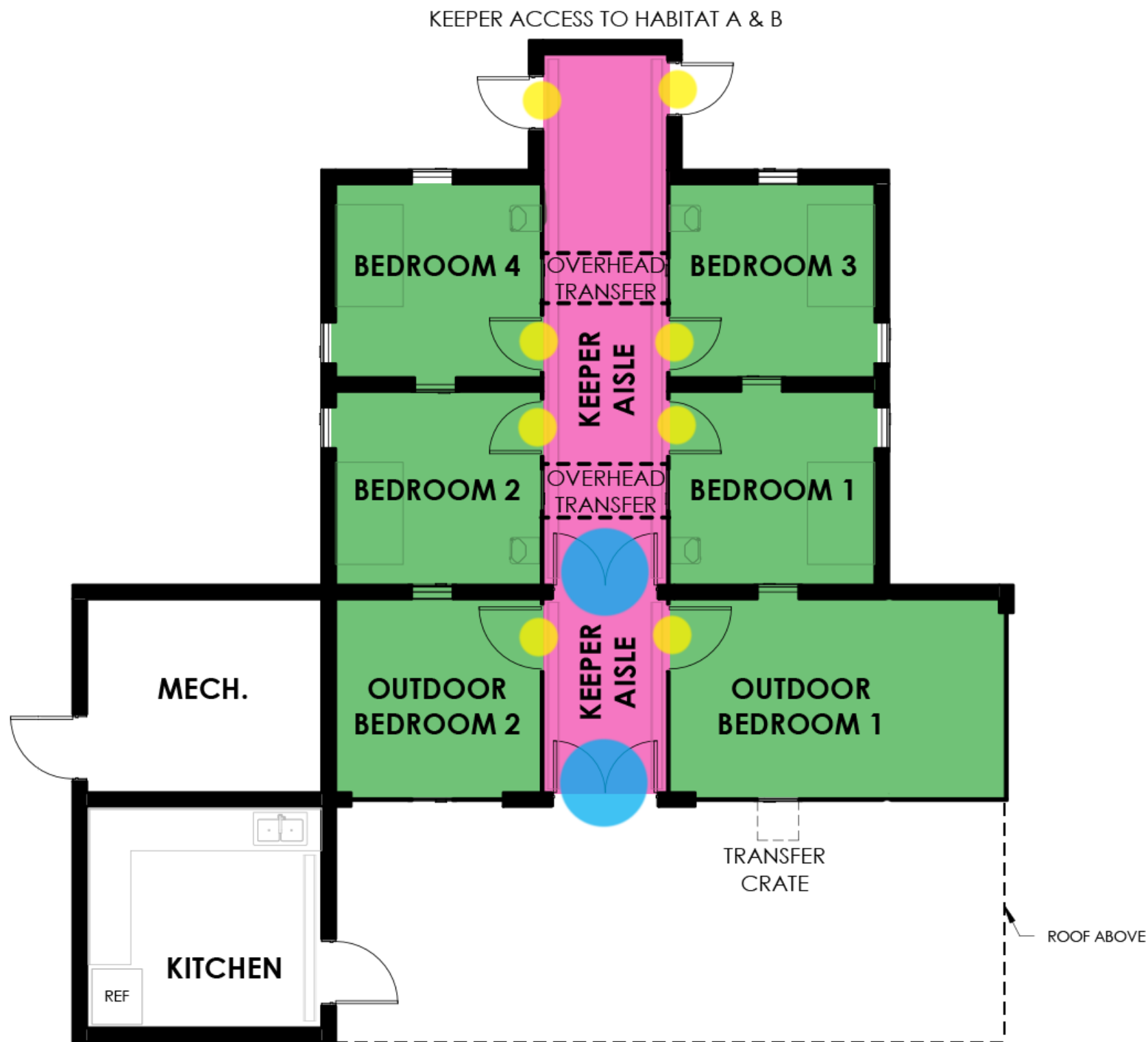




LEGEND

- ANIMAL TRANSFER, REMOTELY OPERATED SLIDING PANELS.
- OVERHEAD ANIMAL TRANSFER, REMOTELY OPERATED SLIDING PANELS.
- KEEPER ACCESS, ALWAYS TWO DOORS BETWEEN ANIMAL AND PUBLIC.
- MAINTENANCE ACCESS. REMOVABLE PANEL IN THE AVIARY MESH
- GUEST VIEWS INTO HABITATS
- TRAINER PATH AROUND HABITATS





LEGEND



KEEPER AREA

- CARE-GIVER TRAINED FOR BIG CATS
- HIGH-SECURITY AREA



ANIMAL SPACE

- OPERATED FROM KEEPERS HALLWAYS.
- NO DIRECT CONTACT BETWEEN CATS AND KEEPERS IS ALLOWABLE.



HUMAN DOOR, ANIMAL-PROOF, PRIMARY CONTAINMENT



HUMAN DOOR, ANIMAL-PROOF, SECONDARY CONTAINMENT

BUILDING ELEMENTS

- STEEL TUBE MESH FRAME PARTITION BETWEEN KEEPERS AISLE AND ANIMAL BEDROOMS
- TRENCH DRAINS
- ALL UTILITIES IN KEEPERS AISLE
- BEDROOMS AND HABITATS CONNECTED WITH CABLE OPERATED SLIDER DOORS
- OVERHEAD TRANSFERS
- DOUBLE CONTAINMENT







