



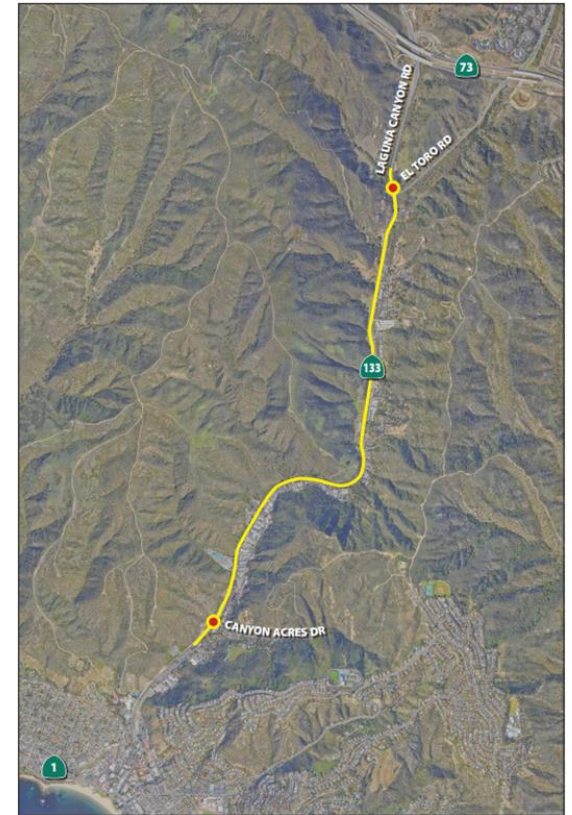
# **Laguna Canyon Road: Protect & Connect**

**Meeting: Coastal Greenbelt Authority**  
**May 8, 2024**

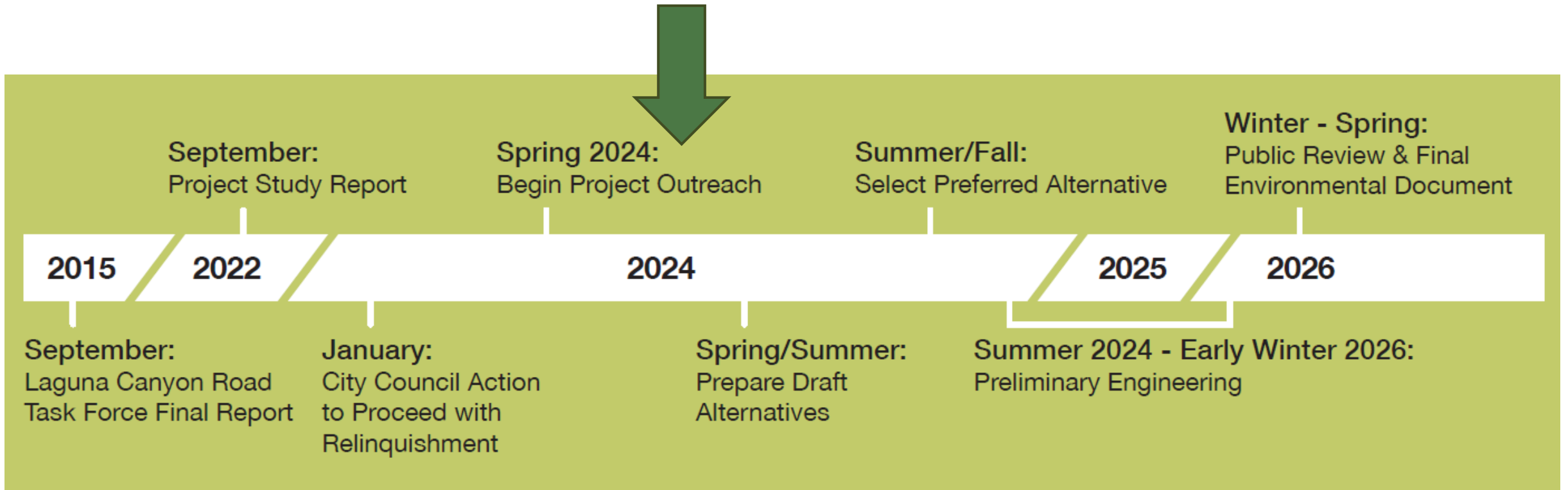


# Project Background

- Study area: El Toro Rd to Canyon Acres Dr (2.5 miles)
- Owned and operated by Caltrans
- Heavily used by pedestrians, cyclists, motorists, & transit riders
- Safety concerns have persisted for many years
- Primary evacuation route in emergencies
- Important ecological, natural habitat and recreational benefits
- Gateway to the City of Laguna Beach

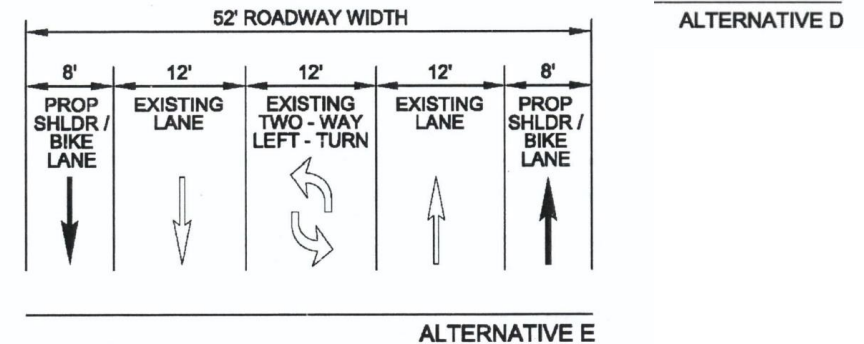
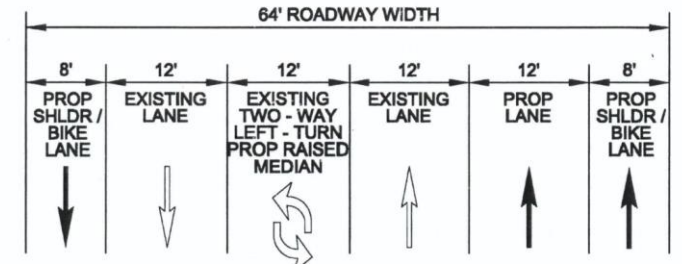


# Past & Present



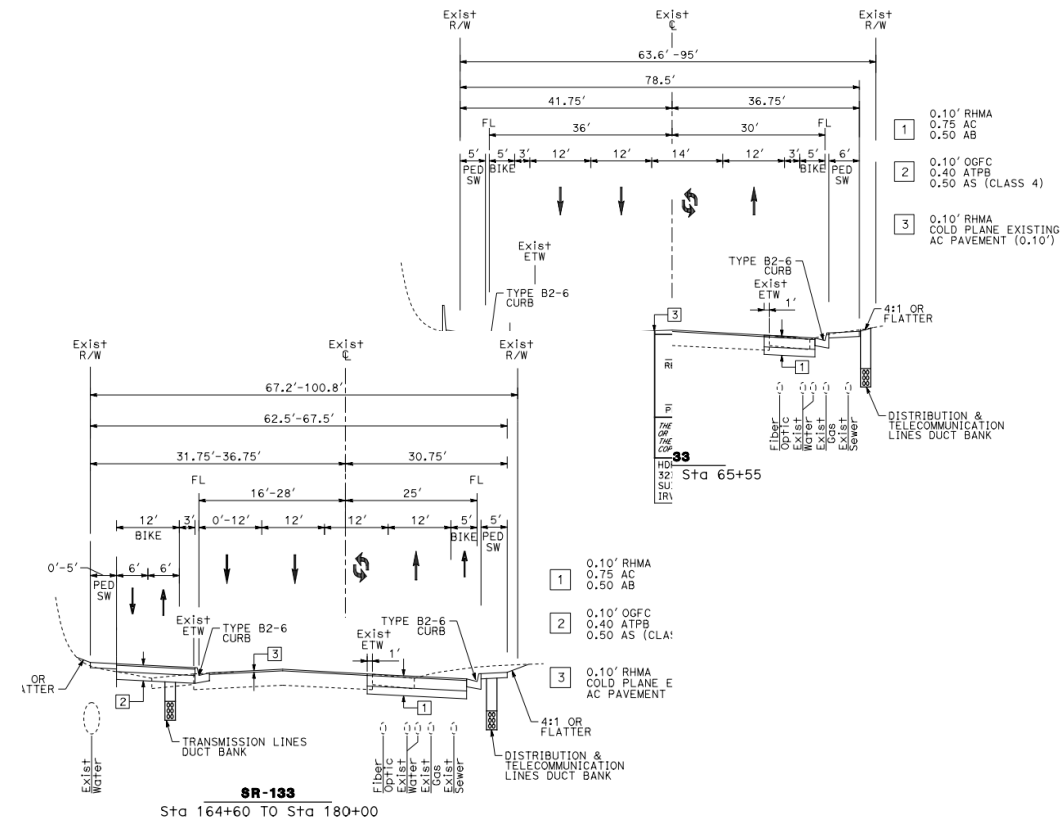
# 2014-2015 Task Force

- City Officials, residents, Caltrans, and other stakeholders
- Evaluated numerous alternatives
- Caltrans standards limit options
- Presented final report in 2015



# Project Study Report (PSR)

- Project Study Report (PSR) initiated in June 2017
- Yielded more detailed alternatives
  - Based on Caltrans design standards
- Cost-benefit analysis prepared in 2021
- PSR approved by Caltrans in 2022



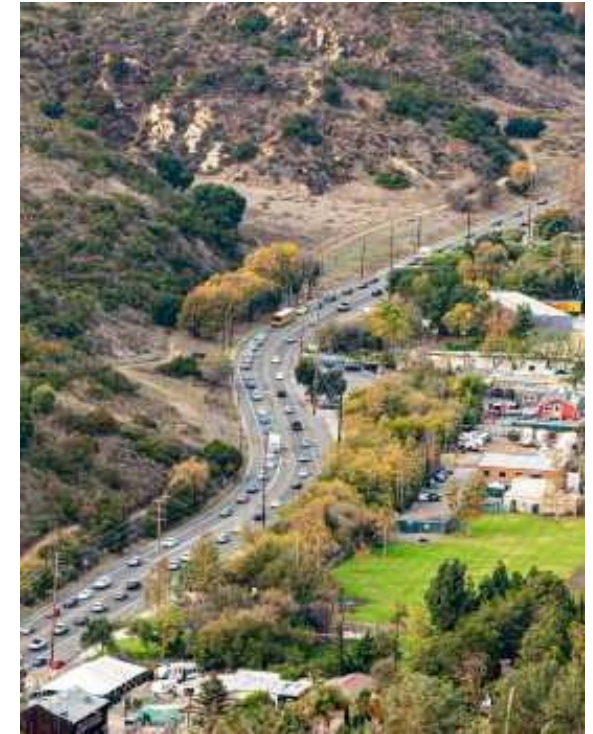
# “Protect & Connect”

- PAED (Project Approval & Environmental Documentation) initiated in May 2023
- Protect & Connect
- Relinquishment initiated in January 2024
  - *Enables alternatives that better respond to community character & goals*



# “Protect & Connect” Goals

- Improve safety
  - Remove utility poles
  - Underground overhead lines
- Provide multi-modal improvements
  - Encourage use by pedestrians, transit users and bicyclists of all ages and abilities
- Develop innovative solutions to improve traffic flow without adding capacity



# Community Direction & Preference

- Outreach Events
  - Pop-ups
  - Stakeholder meetings
  - Door-to-door business outreach
  - Community workshops
- Website - [lagunabeachcity.net/LCR](http://lagunabeachcity.net/LCR)
- Online survey
  - <https://www.surveymonkey.com/r/59MVCF9>



A screenshot of the City of Laguna Beach website. The page title is "Laguna Canyon Road: Protect &amp; Connect". The left sidebar shows a navigation menu with categories like "PUBLIC WORKS AND UTILITIES", "Engineering", "Projects", "Maintenance", "Parking and Transit", "Parks and Recreation", and "Recycling, Waste, and Compost". The main content area includes a "Project Overview" section with a bulleted list of features being considered, such as "Undergrounding utilities", "Bikeways and pedestrian paths", and "Improved crossings". There are also "CONTACT US" and "HOURS" sections on the right side of the page. The logo for "LAGUNA CANYON ROAD PROTECT &amp; CONNECT" is prominently displayed in the center of the page.





# Preliminary Ideas & Concepts



# Undergrounding Utilities



*Before*



*After*

# Pedestrian & Bike Improvements

## Off-Street Bike Path with Sidewalk



## On-Street Bike Lanes with Sidewalk



For discussion purposes only

*Representing concepts from Task Force and PS&E process*

# Off-Street Path Edge Treatments



Raised Island



Rolled Curb



Wood Railing – Can also be combined with options above

For discussion purposes only

# Rural/Natural Design Elements



**Textured/Colored Sidewalks**



**Concrete Rolled Curbs**



**Native Landscape and Decomposed Granite**



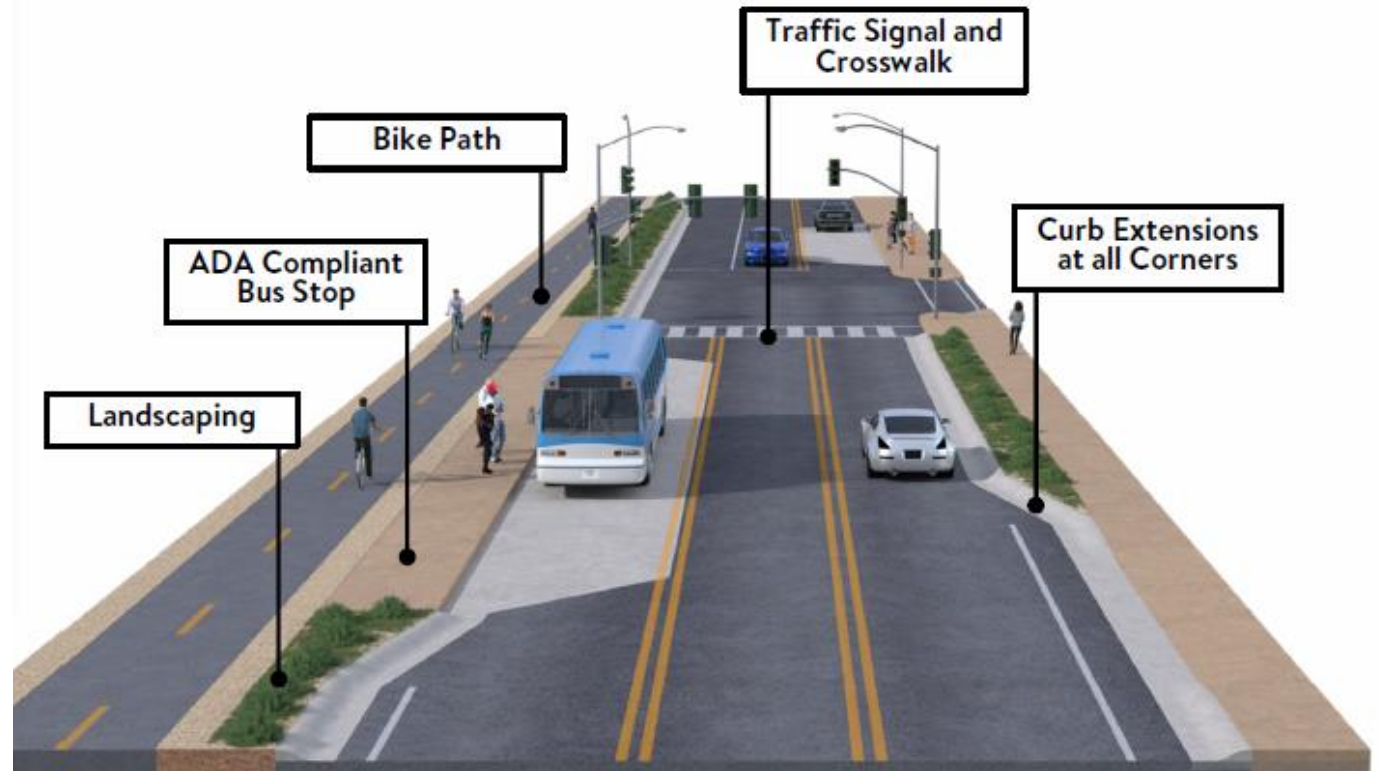
**Rustic Wood Railings**

For discussion purposes only

# Supporting Local Transit



Existing Laguna Canyon Road  
Transit/Bus Stops



Transit/Bus Stop with Traffic Signal and Crosswalk

For discussion purposes only

# Introducing Traffic Calming



**Raised Median Islands**



**Narrowed Lanes and Markings**  
*(Temple Hills Dr, Laguna Beach)*



**Curb Extensions**

For discussion purposes only

# Next Steps

- Alternative Development: May-June
- Engagement – Alternatives in July/August





**THANK YOU!**

March 13, 2024 Tour to review new/change of use trails and new parkland acquired since 1998. Stops Included:

- Entered LCWP at new entrance Ridge Park Gate 9.
- The Ridge Park entry to Crystal Cove State Park and Laguna Coast Wilderness Park was dedicated in 2004 as part of the (Irvine) Newport Coast Development Agreement.
- 2004, 2005, 2006, 2007 new LCWP boundary. Access started with the managed access model, guided hikes, then first and third Sundays open, then first and third Saturdays. Then in 2007 everything south of 73 was open daily.
- 2007 Nix Nature Center opened. Dedicated on November 4, 2007
- New LCWP parkland provides a connection to Pacific Ridge, Red Tail and Lizards Trails. Also to City of Irvine Shady Canyon crossing under the 73.
- Trails between LCWP and CCSP meet but are gated for Emergency Access.
- Lizards Trail was an unauthorized trail. With remarkable cooperative support by OC parks, Laguna Canyon Foundation, Mt Bike Club – Rads and the Natural Communities Coalition the official Lizards Trail opened in 2016.
- Former Marie Calendar Trail is closed – should never be a trail due to ....
- Overlook Emerald Canyon – Addition to LCWP, date..., acreage 300 – 500 acres? New trails for LCWP – Bommer Ridge, Old Emerald Falls Trail, Emerald Canyon Road, Old Emerald Trail.
- Dates for incorporation into LCWP Slow & Easy Trail, Moro Canyon Trail, Moro Ridge?
- Willow Staging Area – replace the original Laurel Canyon Staging Area which was in the GDP, but never established.
- Return to Little Sycamore Canyon Staging Area and Nix Nature Center.

## **Coastal Greenbelt Authority agenda items concerning the 1998 General Development and Resources Management Plans for Laguna Coast Wilderness Park**

- CGA meeting May 11, 2022 – The City of Irvine Open Space Management Plan was presented to CGA. This was presented as a prelude to future review of the Laguna Coast Wilderness Park’s documents – General Development and Resource Management Plans.
- CGA meeting July 13, 2022 – Viewed the video “Inspired by the Land” to better understand the history of LCWP.
- CGA meeting September 9, 2022 – Agenda item: Habitat Sustainability and LCWP Trail Map review of changes since 1998.
  1. 2011 Woods End parcel purchased by City of Laguna Woods, leased to OC to be part of LCWP. Provided linkage to other trails – Ridgetop, BlackJack, Edison.
  2. 2015/2016 Lizards Trail added, involved closing and restoring 2 trails – Drunken Sailor and 9-5.
  3. Early 2000 added Bommer Ridge Trail for access to Ridge Park Road. Eliminated Laurel Canyon Staging Area Access and relocated access to Willow Canyon Staging Area.
- CGA November 9, 2022 - Agenda item: Habitat Sustainability and LCWP Trail Map review. Further discussion of trails within the Woods End section of LCWP.
- CGA January 11, 2023 - Habitat Sustainability and LCWP Trail Map review. More information about trails not included in the 1998 documents: Viewed illustrations of Woods End Trail, Ridge Top, Gravel and Edison trails and other trails in the Dilley section of LCWP. Complex ownership – Cities of Laguna Beach, Laguna Woods; Southern California Edison, Laguna Beach County Water District. All trails are managed by OC Parks and under the NCCP guidelines.
- CGA March 8, 2023 - Habitat Sustainability and LCWP Trail Map review for Field Trip. Approved Woods End Field trip for the May 10, 2023 CGA meeting.
- CGA May 10, 2023 – Woods End Field Trip – Stops included:
  1. Woods End Public Access
  2. Top of Woods End Trail at Ridgetop Road
  3. Top of buried Reservoir
  4. Barabara’s Lake Shoreline
  5. Old Laguna Canyon Road Alignment
- CGA July 12, 2023 - Habitat Sustainability and LCWP Trail Map review. Review of Field Trip. Presentation of other trails not included in the GDP and RMP documents: Old Emerald Falls – new location, Morro sliver, extended Bommer Ridge connection from Dartmoor to Emerald Canyon, Mary’s Trail, area east of Laguna Canyon Road off Fire Road.

1. Discussion of next trail tour – Spring 2024
  2. Questions of when to submit a request for a budget to update the GDP and RMP documents.
  3. CGA members to review the documents for further updates.
- CGA September 13, 2023 - Habitat Sustainability and LCWP Trail Map review.
    1. Members discussed parts of the GDP and RMP.
    2. Agreed with OC Parks staff that an Addendum would be the best document for an update.
    3. Further discussion of a Field Trip to view the remaining new trails.
    4. Members agreed that a request for a budget for the Addendum should be made soon.
  - CGA November 8, 2023 - Habitat Sustainability and LCWP Trail Review
    1. Members reviewed a summary of Authority agenda items concerning the 1998 GDP and RMP.
    2. Distribution to members and staff an initial list of GDP/RMP updates for the proposed Addendum.
    3. Work with park staff for next date for park tour of new and change of use trails and added park land since 1998.
    4. Decision to prepare a letter to OC Parks regarding a budget for the Addendum for approval at the January 10, 2024 meeting.
    5. Encouraged CGA members to review the existing documents for more items for the Addendum.
  - CGA January 10, 2024 – Habit Sustainability and LCWP Trail Review
    1. Staff outlined a tour of the Ridge Park section of LCWP which has new trails and new parkland since 1998. Agreed on the March 13, 2024 meeting for the tour, weather permitting.
    2. Reviewed the request for an Addendum Budget letter. Approved to send to OC Parks, copied to 5<sup>th</sup> District Supervisor.
  - CGA March 13, 2024 – Tour of the Ridge Park area
    1. Brief meeting at the Nix Nature Center
    2. Vehicle tour of Ridge Park trails starting from the Ridge Park entrance and returning through the park to the Willow Staging Area and to Nix Nature Center.