



Combined Project at El Toro on SR-133

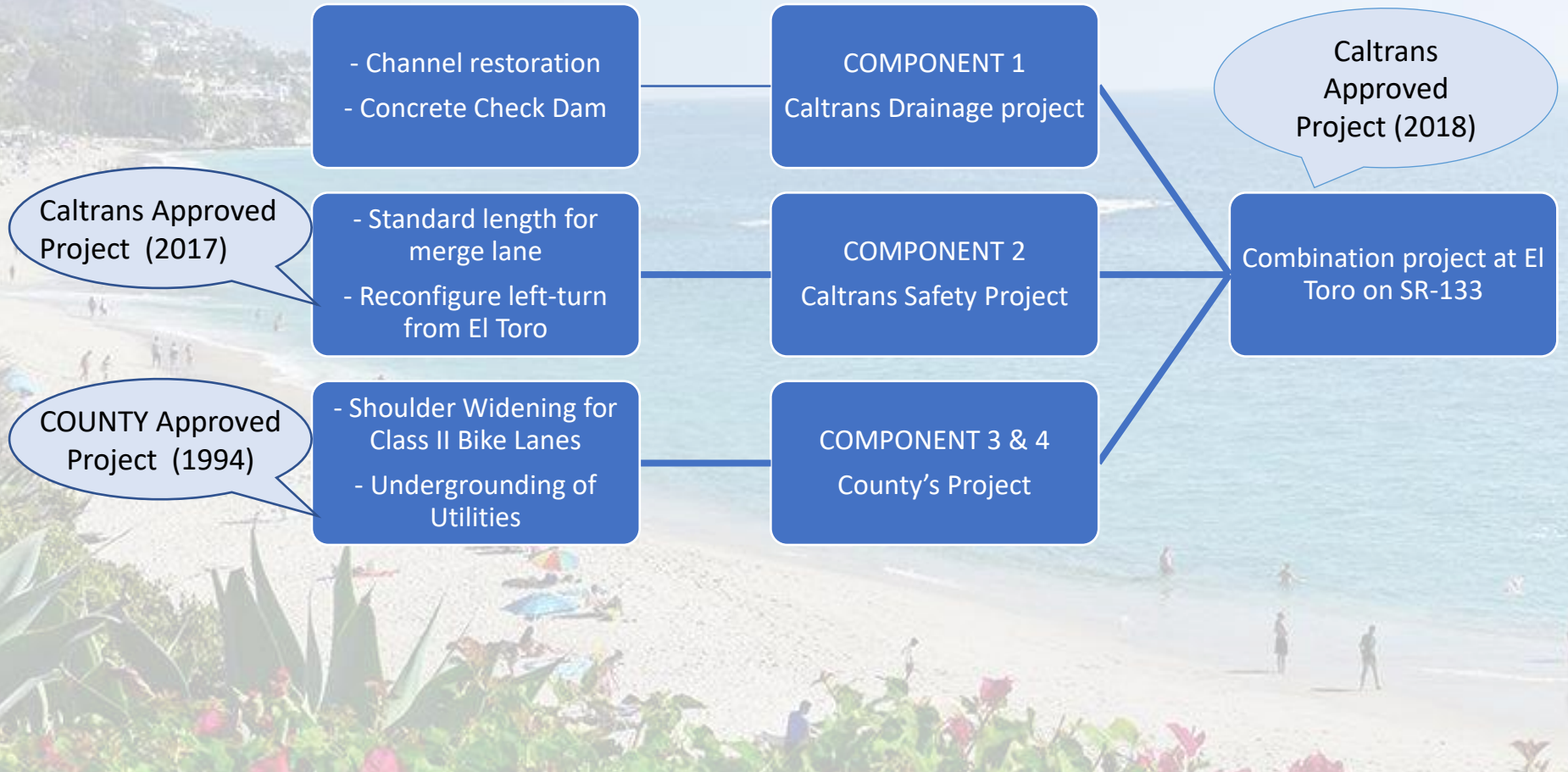
Combined Project at El Toro on SR-133

SR-133 Improvement Project

- Introduction
- Project background
- Environmental Compliance during Construction
- Construction Schedule and Milestones



Background – The 4 Components

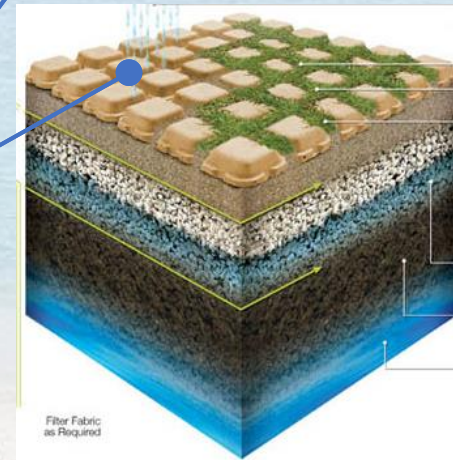
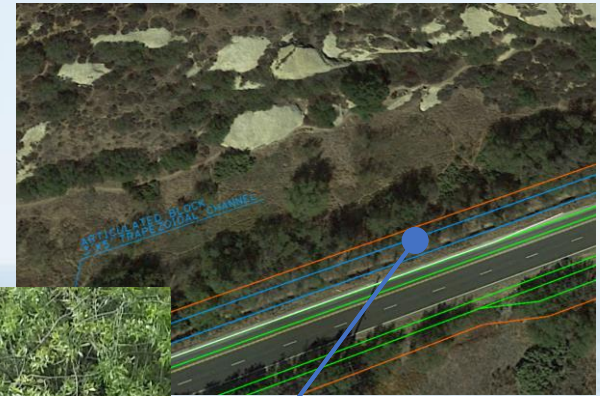


Background – Project Benefits

- Drainage improvements
- Safety improvements
- Visual improvements
- Bike lanes

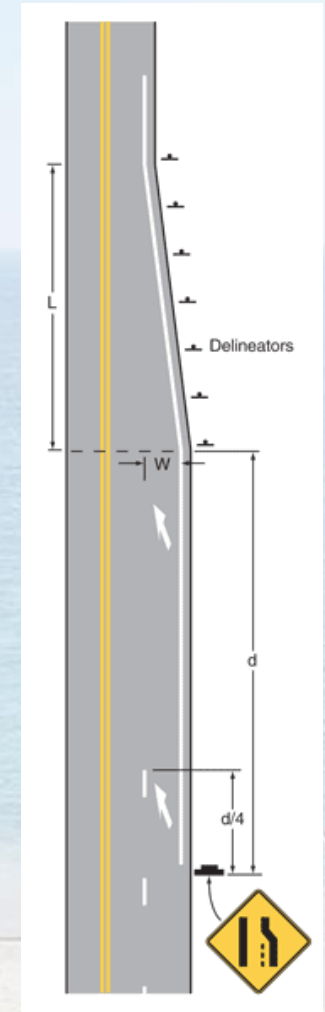
Background – Project Benefits

- Drainage improvements



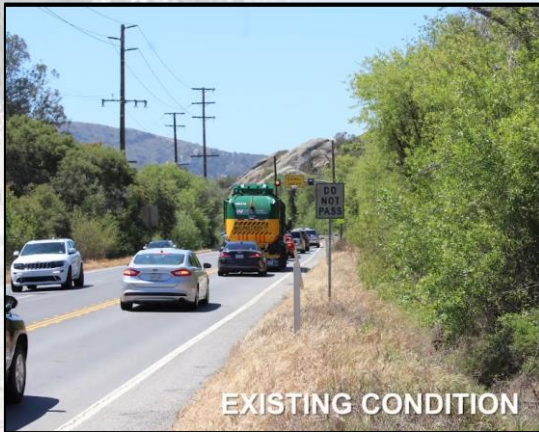
Background – Project Benefits

- Safety improvements



Background – Project Benefits

- Visual improvements



Existing
Conditions

←→



Proposed
Conditions

←→

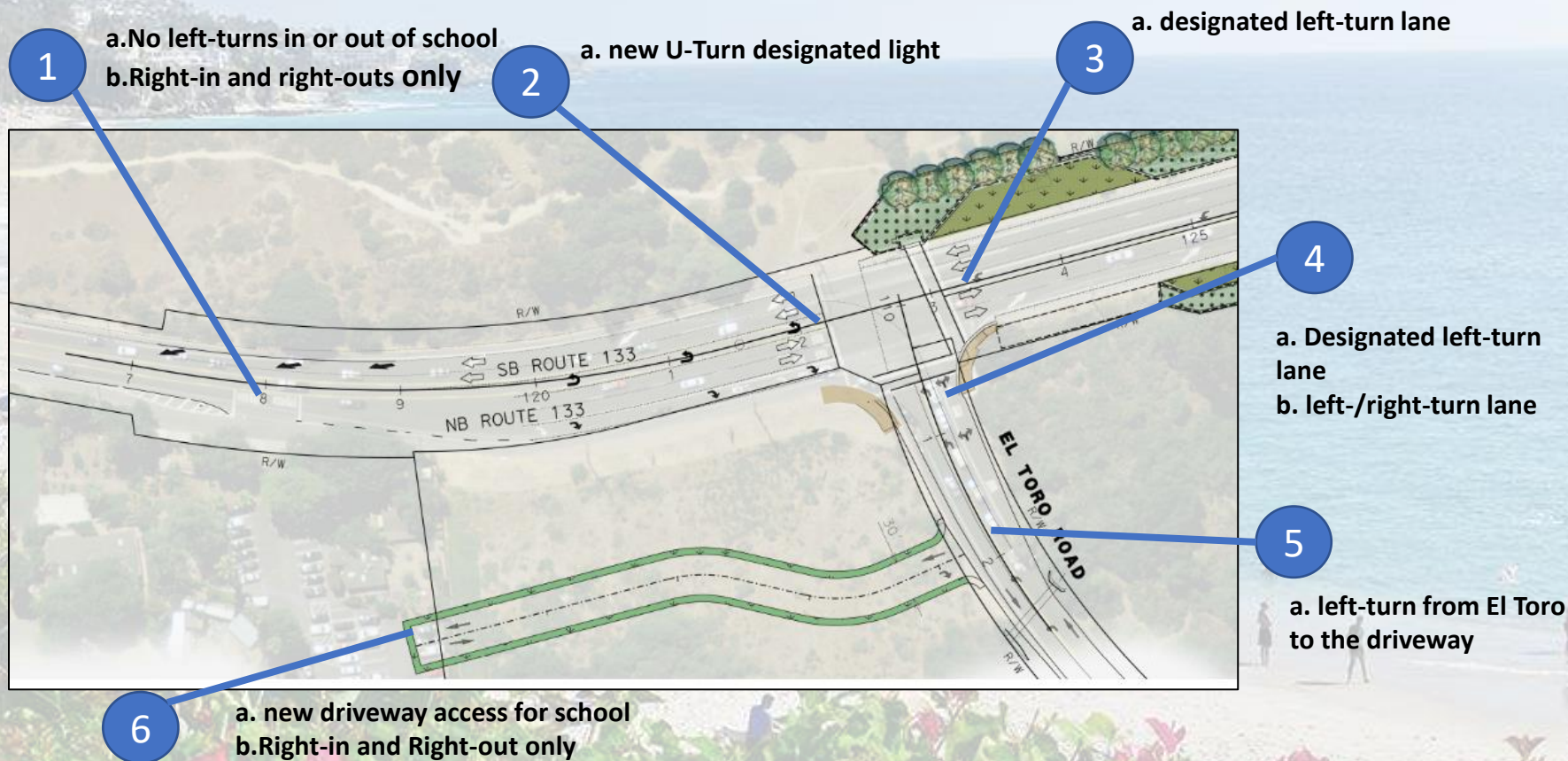


Background – Project Benefits

- Bike lanes



• Traffic Flow



Environmental Requirements

Environmental Commitment Record (ECR)

Measures from Environmental Document Phase

- Biological
- Cultural
- Paleontological
- Visual
- Noise
- Air Quality
- Human Environment
- Etc.

Permit Requirements

- 401 Permit (Water Board)
- 404 Permit (Army Corps)
- 1602 Permit (CDFW)
- Coastal Development Permit (CDP) – City of Laguna Beach

Environmental Compliance During Construction

- Internal documentation and reporting structure
 - Contractor – implementation
 - Inspector – verification
 - Biological and cultural monitors - verification
- Quarterly ECR Compliance Reports

Biological Environment

- Off-site mitigation for Riparian/Riverine Habitat
 - Temporary Impacts Mitigated 1:1
 - Permanent Impacts Mitigated 3:1 (off-site)
- Oak Tree Protection
 - Retained trees monitored during construction
 - Tree Dripline Protection
 - Coast Live Oaks mitigated 1:1; Heritage Oak Trees 3:1
- Environmentally sensitive area (ESA) fencing
- Preconstruction surveys for sensitive species, nesting birds, etc.
- Biological construction monitoring
- Night construction lighting

Cultural Resources

- Archaeological Monitoring Area
- Archaeological and Native American Monitoring
- Discovery Protocols

Construction Schedule and Milestones

