



Natural Community Conservation Plan & Habitat Conservation Plan Overview
Orange County Parks Trails Subcommittee – May 11, 2023



Overview



Oak Woodlands are one of the protected native habitat types in the NCCP/HCP, Whiting Ranch Wilderness Park

- Description of the Natural Community Conservation Plan/Habitat Conservation Plan (NCCP/HCP)
- OC Parks acres in major conservation plans and easements
- OC Parks facilities in the NCCP/HCP
- How the NCCP/HCP affects management of OC Parks facilities

What is the NCCP/HCP?



Coastal California Gnatcatchers are federally-listed as threatened and are targeted for protection in the NCCP/HCP

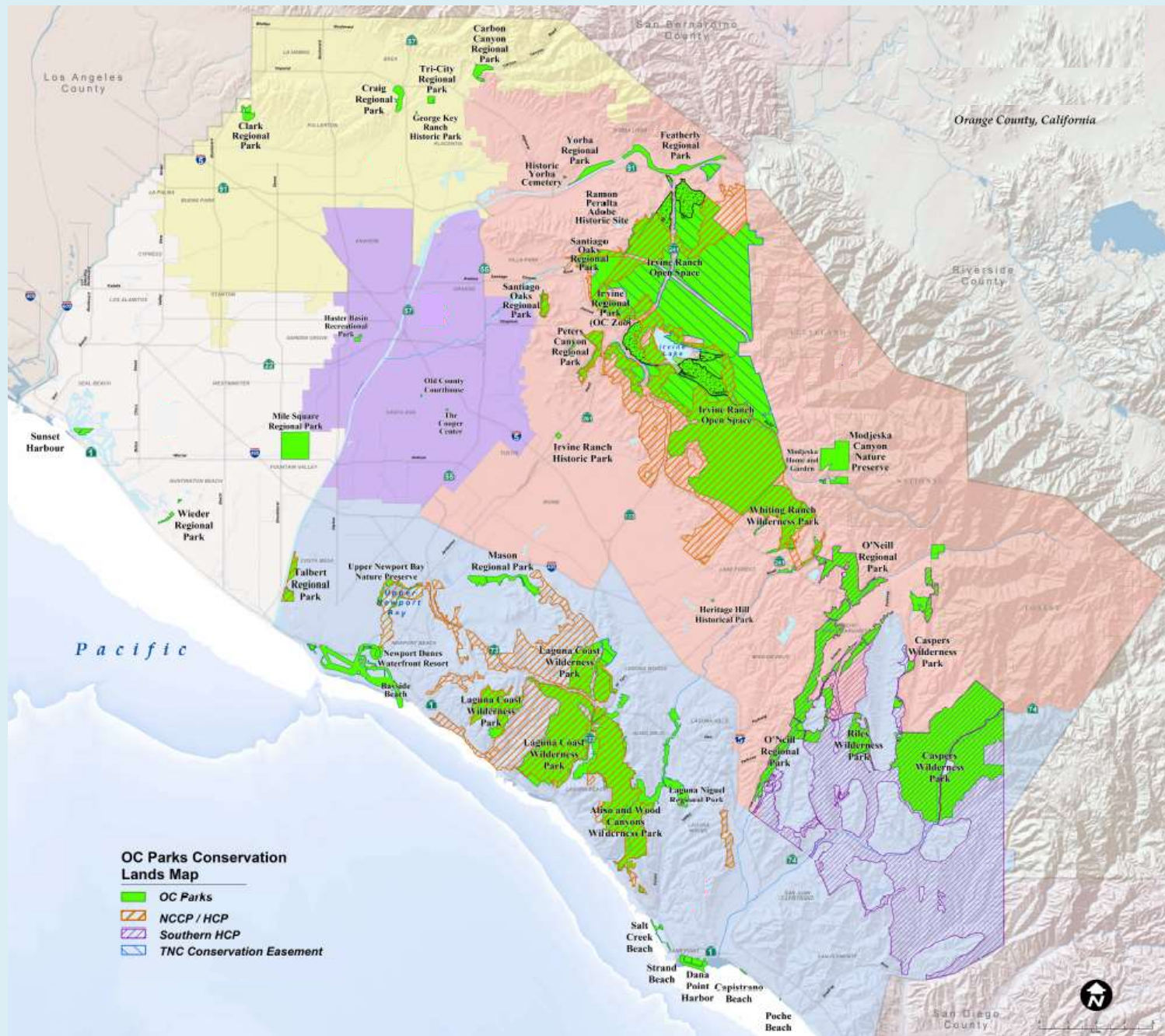
- A plan intended to provide regional protection and recovery of multiple native species and habitat types at a regional scale while allowing compatible land use, including passive recreation
- A 75-year permit (1996–2071) between wildlife agencies and multiple permittees, including the County

The County of Orange Central & Coastal Subregion Natural Community Conservation Plan & Habitat Conservation Plan

“Natural Community”
makes it a state permit with
California Department of Fish & Wildlife
(CDFW)

“Habitat”
makes it a federal permit with
US Fish & Wildlife Service
(USFWS)

How many OC Parks Acres are in Conservation Plans & Easements?



Natural Community Conservation Plan & Habitat Conservation Plan Overview
Orange County Parks Trails Subcommittee — May 11, 2023



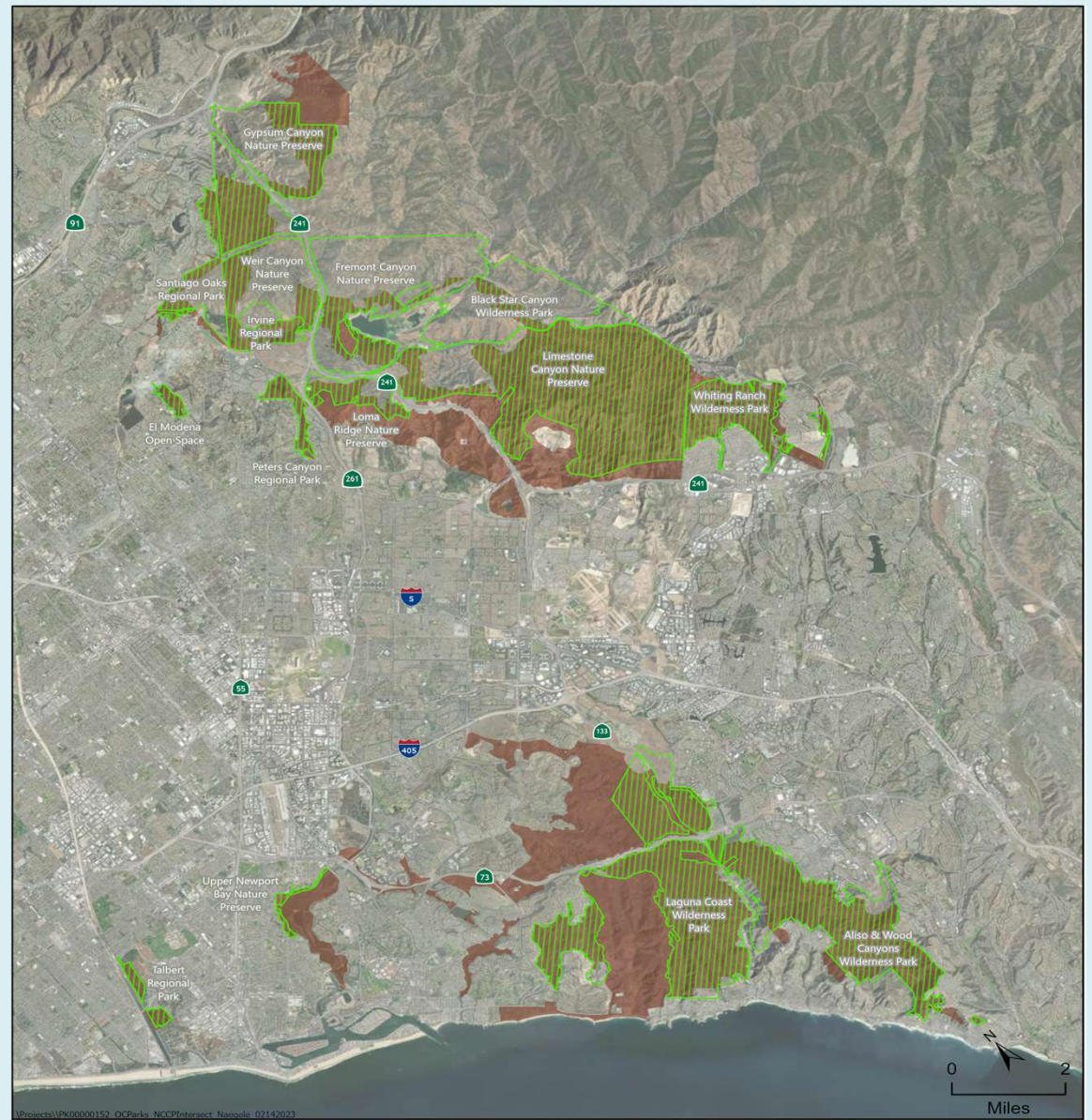
What Parks are in the NCCP/HCP?

Central Subregion OC Parks Facilities:

- Whiting Ranch Wilderness Park
- Parts of Irvine Ranch Open Space
- Irvine Regional Park
- Peters Canyon Regional Park
- Santiago Oaks Regional Park
- El Modena Open Space

Coastal Subregion OC Parks Facilities:

- Aliso & Wood Canyons Wilderness Park
- Laguna Coast Wilderness Park
- Upper Newport Bay Nature Preserve
- Talbert Regional Park



Project:LP600000152_OC Parks_NCCP/HCP/Map - Navado: 02142023

DESIGNED AND PRODUCED BY:
OC Parks

DATA SOURCE:
OC Parks, Orange Earthstar Geographics (Aerial Imagery)

The County of Orange and OC Parks/OC Parks/Survey/GIS/LES make no representations or warranties regarding the registration or accuracy of the data from which this map was derived. Neither the County nor OC Parks/OC Parks/Survey/GIS/LES shall be liable under any circumstances for any direct, indirect, special, incidental or consequential damages with respect to any claims by any user or any third party on account of or arising from the use of this data.

DATE: February 14, 2023



■ NCCP Management Areas
▨ OC Parks
▨ OC Parks and NCCP
~22,650 Acres

OC Parks Facilities within NCCP/HCP



How Does the NCCP/HCP Affect Park Management & Operations?



Coastal Sage Scrub and Cliff and Rock Habitats are protected native habitat types in the NCCP/HCP, Irvine Ranch Open Space

- OC Parks must meet permit obligations intended to protect and promote conservation values by managing parks according to the NCCP/HCP.
- Only compatible uses are allowed and OC Parks must coordinate, track, and report all activities, and account for habitat “take.”

Key Points



Coastal Cactus Wrens are a target conservation species in the NCCP/HCP

- The NCCP/HCP is a 75-year permit with wildlife agencies, intended to protect and enhance conservation values.
- 40% of OC Parks-managed land is in the NCCP/HCP.
- Only compatible, permitted activities/uses are allowed in NCCP/HCP parks. OC Parks is required to coordinate, track, and report activities in these park, and account for negative habitat impacts with “take.”
- The Natural Communities Coalition (NCC) is a non-profit organization in place to administer and coordinate the NCCP/HCP.
- The major conservation plans and easements over Parks lands differ, but all place constraints on allowable land use and have compliance obligations for OC Parks.

Questions?



Tecate Cypress, Horned Lizards, Intermediate Mariposa Lilies, and Orange-Throated Whiptail Lizards are all species with conservation and management protections in the NCCP/HCP