

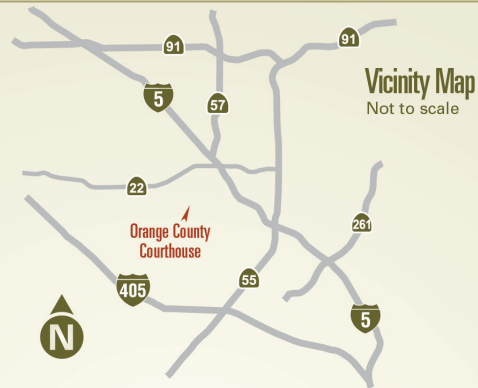


# Old Orange County Courthouse

HOURS: MON. - FRI. 8:00 A.M. - 5:00 P.M.

HISTORIC PARK

**30,000** SQUARE FEET AND MORE THAN 100 YEARS OF WEDDINGS, TRIALS AND ORANGE COUNTY HISTORY



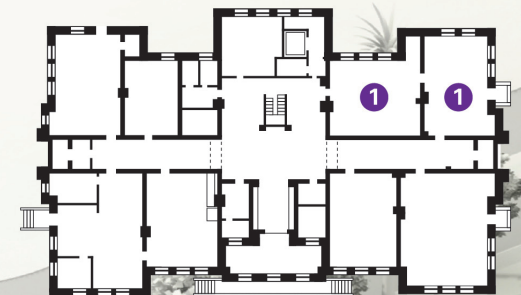
Vicinity Map  
Not to scale



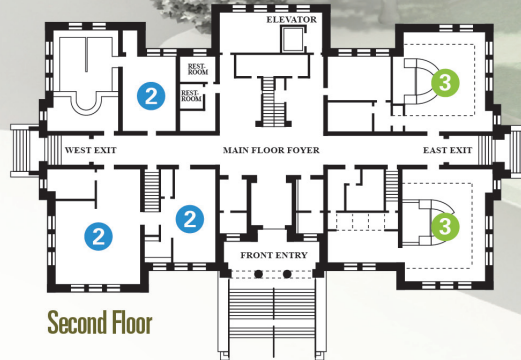
Area Map  
Not to scale

## Floor Plan

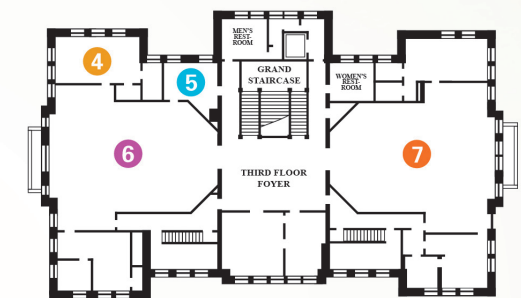
1. OC Archives
2. Clerk of the Board Assessment Appeals
3. Clerk Recorder, Marriage Licenses & Passports
4. Jury Room
5. Court Reporter's Office
6. Courtroom No. One
7. Museum Exhibit Gallery



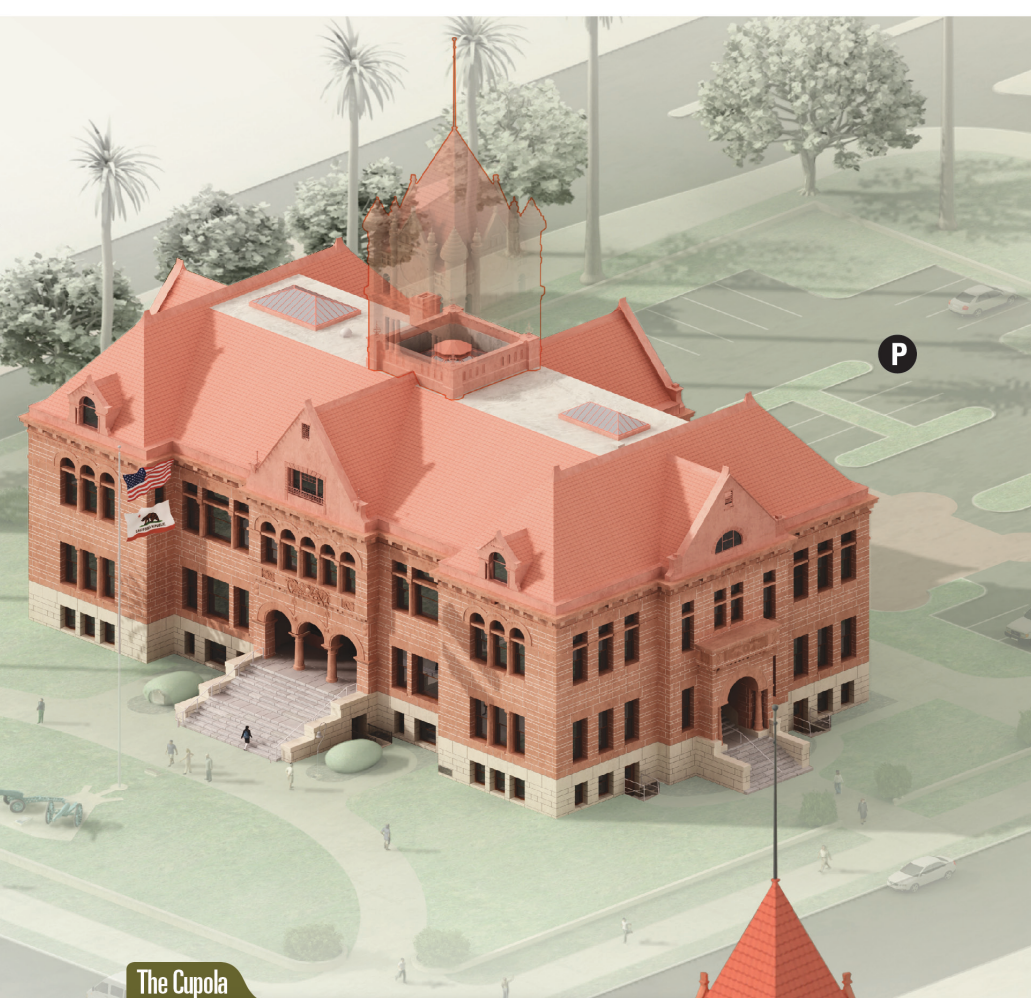
First Floor



Second Floor



Third Floor



### The Cupola

The Long Beach earthquake of 1933 damaged the red sandstone gable ends and turrets. The sandstone was replaced by painted stucco, while the turrets were replaced by finials. The most notable damage, however, was sustained by the pressed metal cupola. It was so badly damaged it had to be removed.



## Timeline

Construction of the Old Orange County Courthouse began in 1900, and was completed 17 months later. Los Angeles architect Charles L. Strange chose a style called Richardsonian Romanesque. Featuring semicircular arches and columns with ornamented capitals, the Old Orange County Courthouse is one of the few remaining examples of this style in Southern California.

The Old Orange County Courthouse was originally constructed of brick with a steel superstructure. Veneers of red Arizona sandstone and Temecula granite covered the entire building. Above the main entrance is an example of tracery, with stylized images of twining leaves, flowers and animal heads. On the east side is a carved balcony featuring a female face. On the west side balcony is a carved image of the scales of justice.

**1900**

County Board of Supervisors commissions design of a courthouse. Los Angeles architect Charles L. Strange begins work.

**1914**

Due to rapid population growth in Orange County, a second courtroom is added.



**1969**

The courts leave the Old Orange County Courthouse for a new and larger facility down the street. Some government functions are still performed here.

**2001**

The Old Orange County Courthouse celebrates its centennial.

**Present**

**1901**

Orange County's beautiful new granite and sandstone courthouse is formally dedicated.

**1893**

County of Orange purchases land from William Spurgeon, founder of Santa Ana.

**1933**

The Long Beach earthquake damages the sandstone gable ends and turrets, and the metal cupola. The cupola is removed.

**1983**

Restoration begins on the Old Orange County Courthouse.

**1992**

Restoration is completed on the Old Orange County Courthouse.

**1977**

The Old Orange County Courthouse is listed on the National Register of Historic Places, in the California Register of Historical Resources and as California Historical Landmark No. 837.