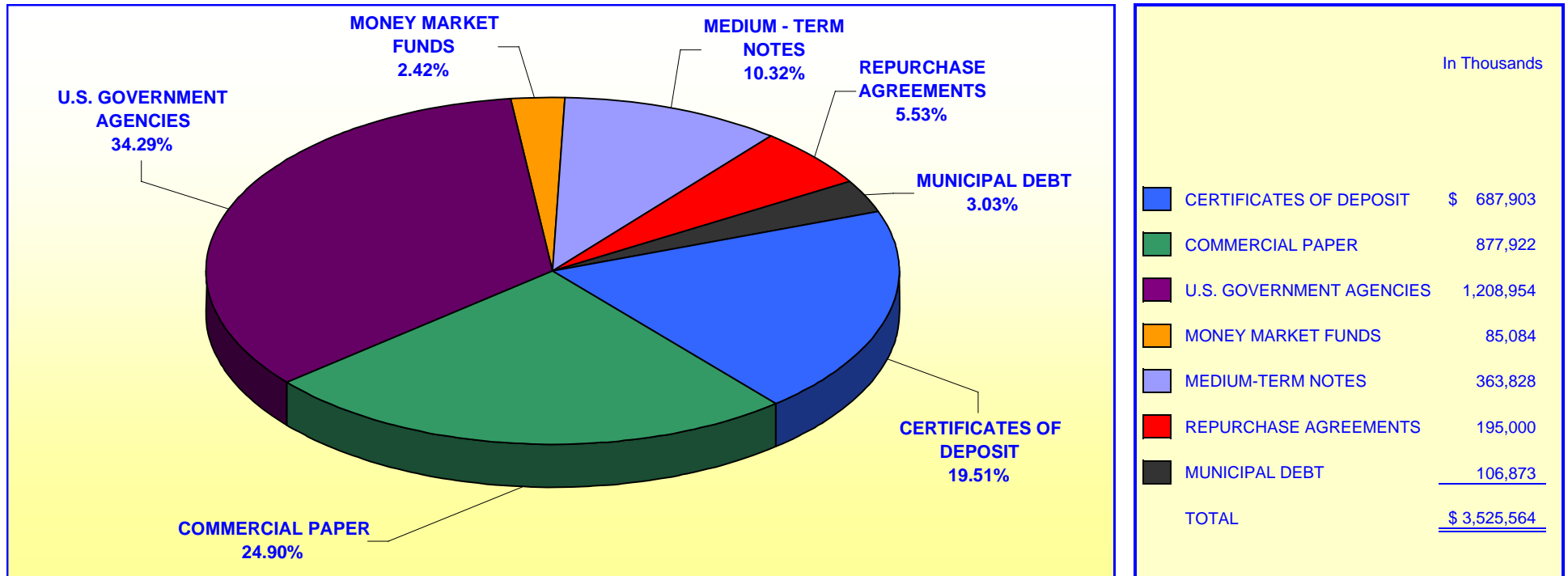


ORANGE COUNTY TREASURER - TAX COLLECTOR
ORANGE COUNTY INVESTMENT POOL
PORTFOLIO COMPOSITION - COMBINED **
April 30, 2006

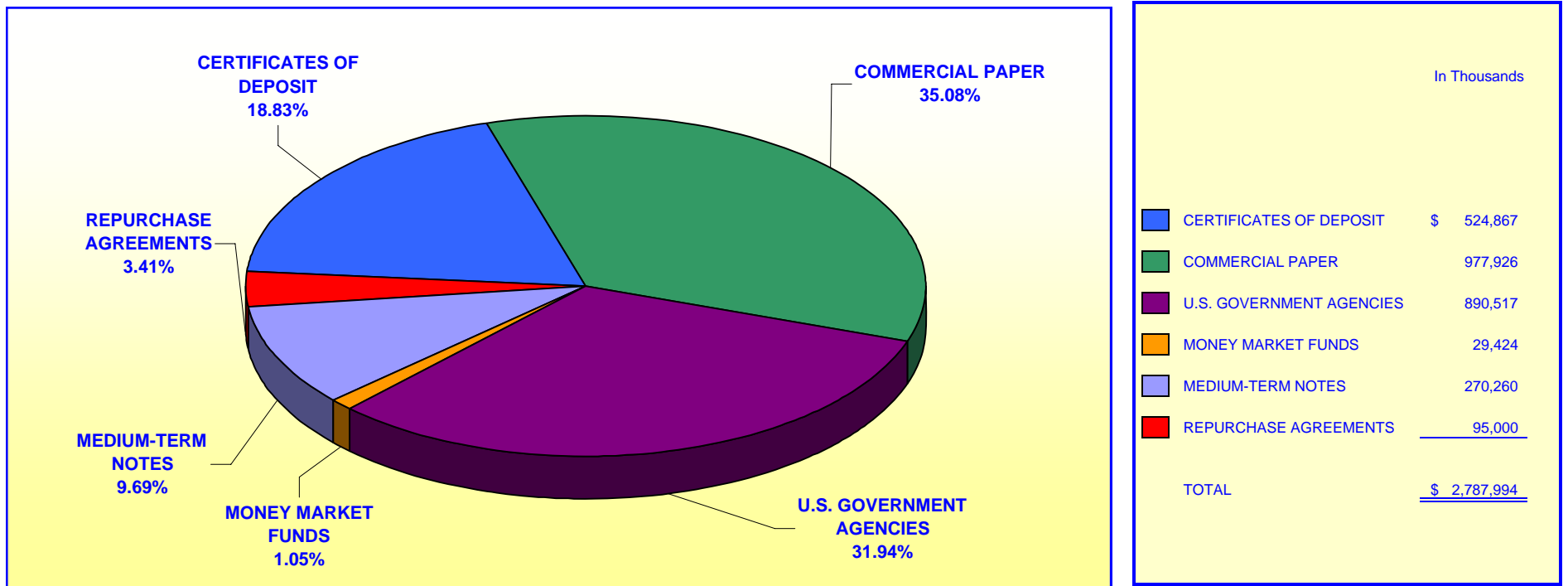


Investment Composition Is In Compliance With The Orange County Treasurer's Investment Policy Statement

** Calculated Using Market Value at 04/30/2006

**ORANGE COUNTY TREASURER - TAX COLLECTOR
ORANGE COUNTY EDUCATIONAL INVESTMENT POOL
PORTFOLIO COMPOSITION - COMBINED ****

April 30, 2006



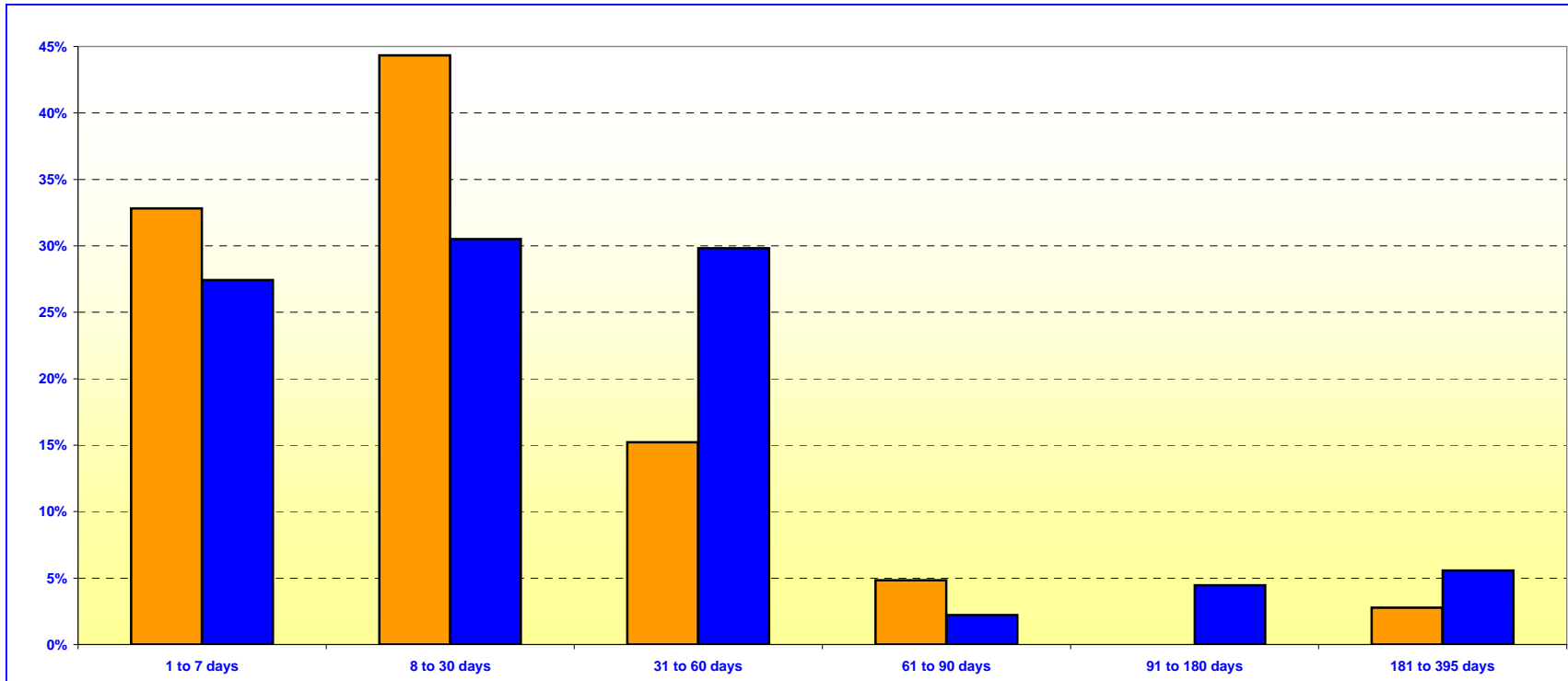
Investment Composition Is In Compliance With The Orange County Treasurer's Investment Policy Statement

*** Calculated Using Market Value at 04/30/2006*

ORANGE COUNTY TREASURER - TAX COLLECTOR
ORANGE COUNTY MONEY MARKET FUND AND EDUCATIONAL MONEY MARKET FUND

MATURITIES DISTRIBUTION

April 30, 2006



O.C. INVESTMENT POOL MONEY MARKET FUND		
	In Thousands	%
1 TO 7 DAYS	\$ 778,873	32.81%
8 TO 30 DAYS	1,052,286	44.34%
31 TO 60 DAYS	361,287	15.22%
61 TO 90 DAYS	115,000	4.85%
91 TO 180 DAYS	0	0.00%
181 TO 395 DAYS	66,000	2.78%
TOTAL	\$ 2,373,446	100.00%

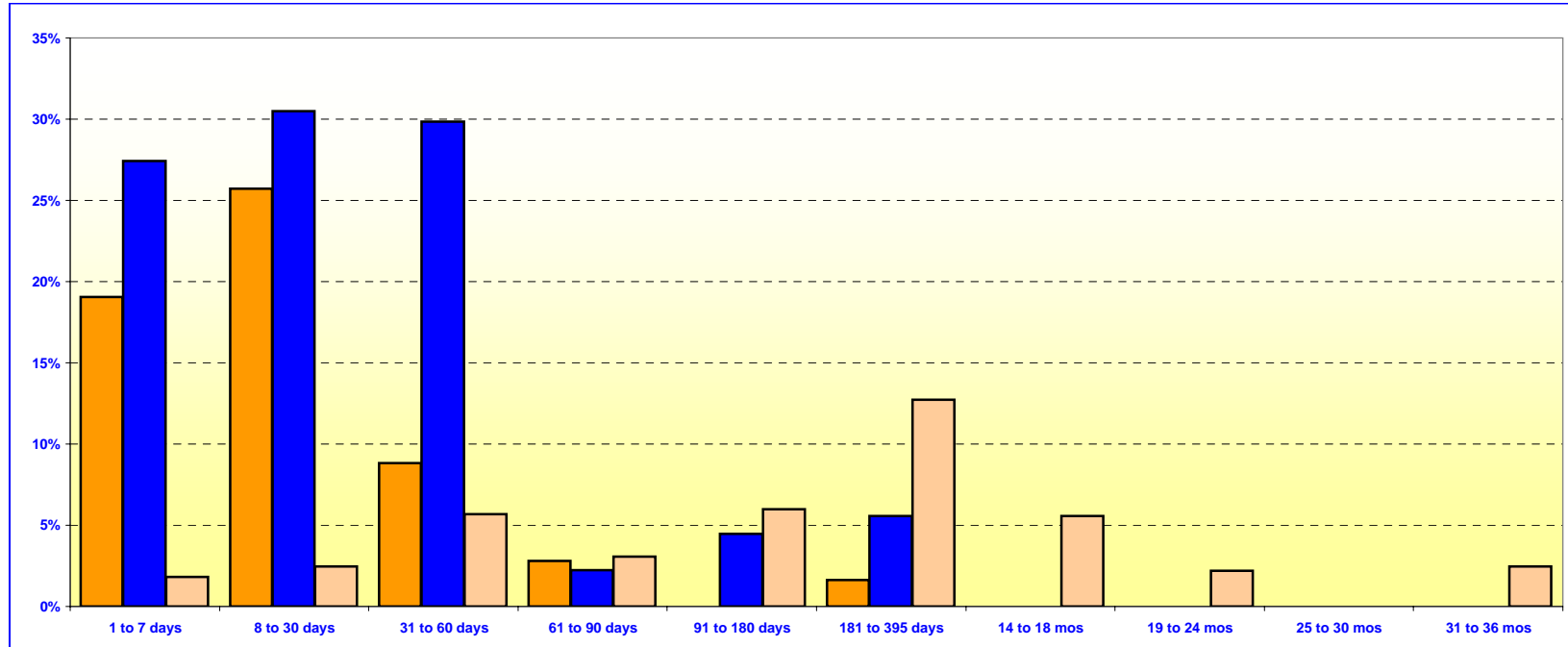
O.C. EDUCATIONAL MONEY MARKET FUND		
	In Thousands	%
1 TO 7 DAYS	\$ 615,549	27.42%
8 TO 30 DAYS	684,897	30.51%
31 TO 60 DAYS	669,850	29.83%
61 TO 90 DAYS	50,000	2.23%
91 TO 180 DAYS	100,000	4.45%
181 TO 395 DAYS	124,853	5.56%
TOTAL	\$ 2,245,149	100.00%

Maturity Limits Are In Compliance With The Orange County Treasurer's Investment Policy Statement

Floating Rate Notes are deemed to have a maturity date equal to their next interest reset date.
 At April 30, 2006, Floating Rate Notes comprise 9.55% and 6.64% of the O.C. Money Market Fund and Educational Money Market Fund respectively.

ORANGE COUNTY TREASURER - TAX COLLECTOR
ORANGE COUNTY AND EDUCATIONAL INVESTMENT POOLS
MATURITIES DISTRIBUTION

April 30, 2006



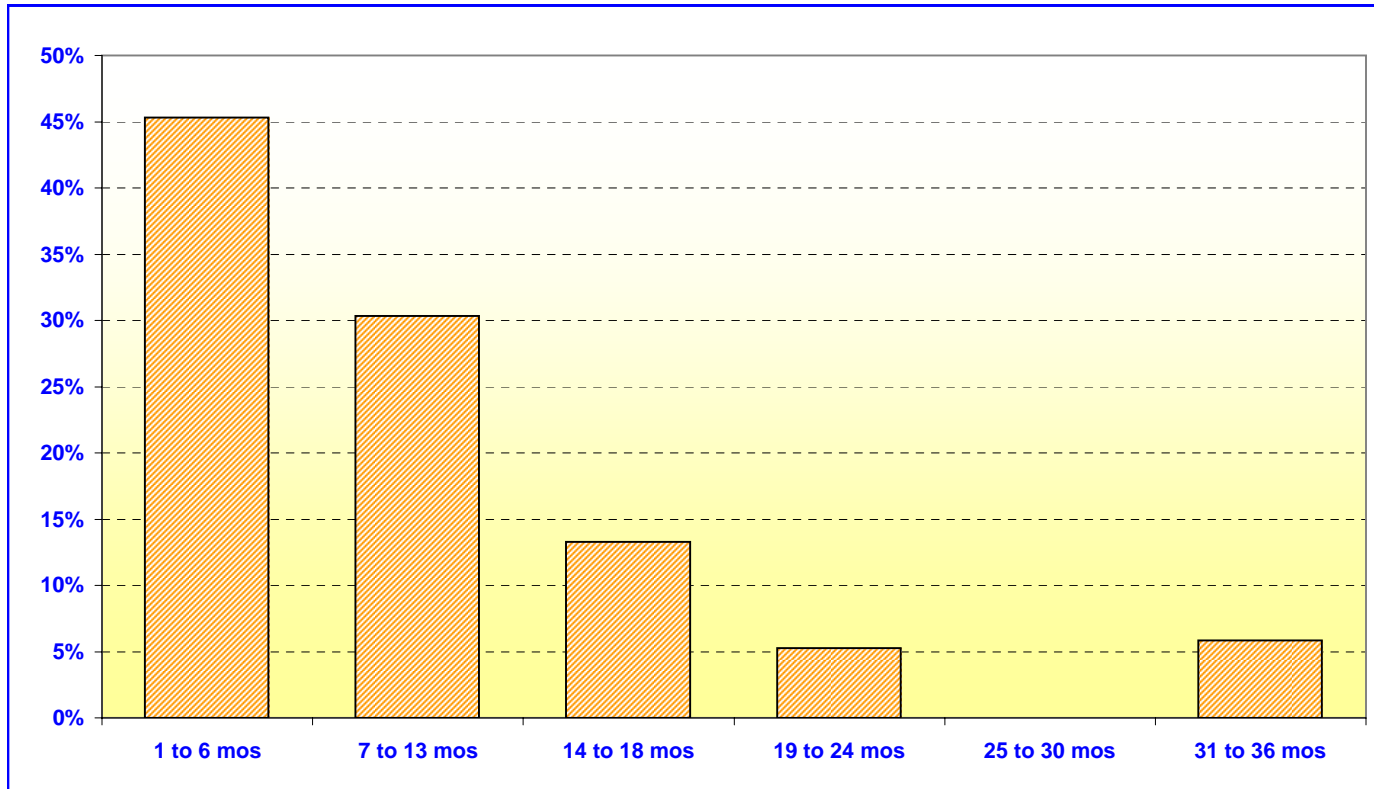
O.C. INVESTMENT POOL				
In Thousands				
			In Thousands	%
Money Market Fund	1 TO 7 DAYS	\$	778,873	19.04%
Money Market Fund	8 TO 30 DAYS		1,052,287	25.73%
Money Market Fund	31 TO 60 DAYS		361,287	8.83%
Money Market Fund	61 TO 90 DAYS		115,000	2.81%
Money Market Fund	91 TO 180 DAYS		0	0.00%
Money Market Fund	181 TO 395 DAYS		66,000	1.61%
Extended Fund	1 TO 7 DAYS		75,000	1.83%
Extended Fund	8 TO 30 DAYS		100,000	2.45%
Extended Fund	31 TO 60 DAYS		233,131	5.70%
Extended Fund	61 TO 90 DAYS		125,000	3.06%
Extended Fund	91 TO 180 DAYS		245,000	5.99%
Extended Fund	181 TO 395 DAYS		520,932	12.74%
Extended Fund	14 TO 18 MONTHS		227,850	5.57%
Extended Fund	19 TO 24 MONTHS		90,000	2.20%
Extended Fund	25 TO 30 MONTHS		0	0.00%
Extended Fund	31 TO 36 MONTHS		100,000	2.44%
TOTAL			\$ 4,090,360	100.00%

O.C. EDUCATIONAL MONEY MARKET FUND		
In Thousands		
	In Thousands	%
1 TO 7 DAYS	\$ 615,549	27.42%
8 TO 30 DAYS	684,897	30.51%
31 TO 60 DAYS	669,850	29.83%
61 TO 90 DAYS	50,000	2.23%
91 TO 180 DAYS	100,000	4.45%
181 TO 395 DAYS	124,853	5.56%
TOTAL		\$ 2,245,149 100.00%

Maturity Limits Are In Compliance With The Orange County Treasurer's Investment Policy Statement

Floating Rate Notes are deemed to have a maturity date equal to their next interest reset date.
 At April 30, 2006 Floating Rate Notes comprise 11.41% and 6.64% of the O.C. Investment Pool and Educational Money Market Fund respectively.

ORANGE COUNTY TREASURER - TAX COLLECTOR
ORANGE COUNTY INVESTMENT POOL - EXTENDED FUND
MATURITIES DISTRIBUTION
April 30, 2006



O.C. INVESTMENT POOL EXTENDED FUND		
	In Thousands	%
1 TO 6 MOS	\$ 778,131	45.32%
7 TO 13 MOS	520,932	30.34%
14 TO 18 MOS	227,850	13.27%
19 TO 24 MOS	90,000	5.24%
25 TO 30 MOS	0	0.00%
31 TO 36 MOS	<u>100,000</u>	<u>5.83%</u>
TOTAL	<u>\$ 1,716,913</u>	<u>100.00%</u>

Maturity Limits Are In Compliance With The Orange County Treasurer's Investment Policy Statement

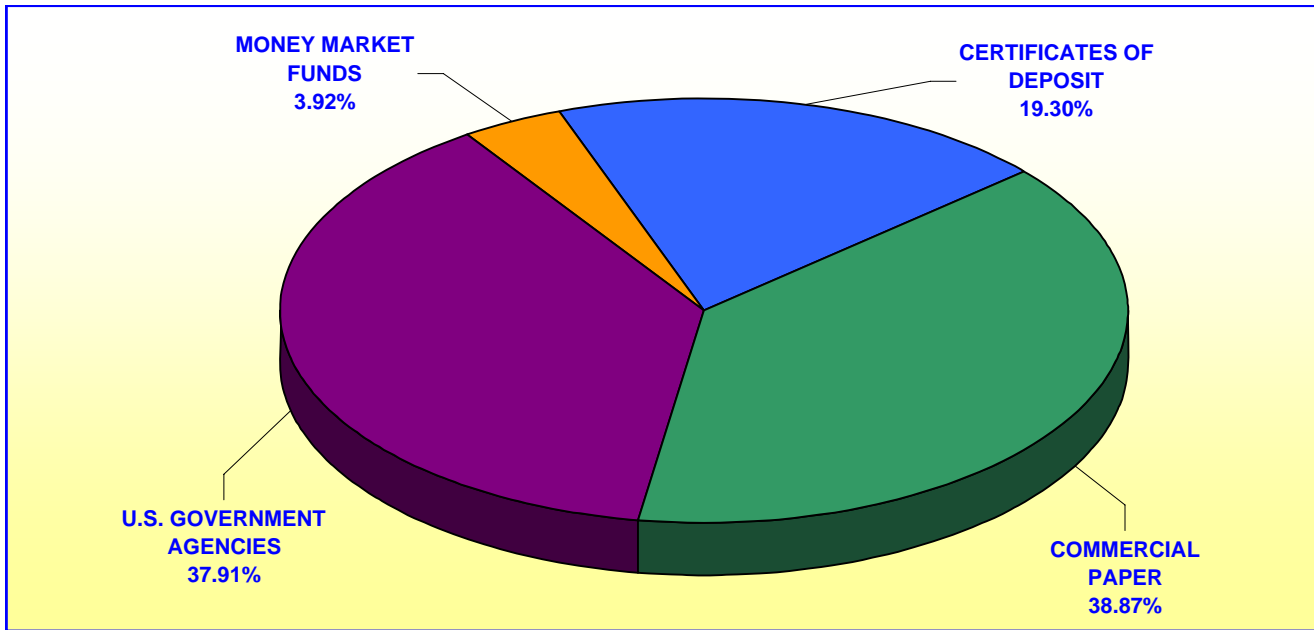
Floating Rate Notes are deemed to have a maturity date equal to their next interest reset date.
 At April 30, 2006, Floating Rate Notes comprise 11.41% of the O.C. Extended Fund.

ORANGE COUNTY TREASURER - TAX COLLECTOR

JOHN WAYNE AIRPORT INVESTMENT POOL

PORTFOLIO COMPOSITION **

April 30, 2006



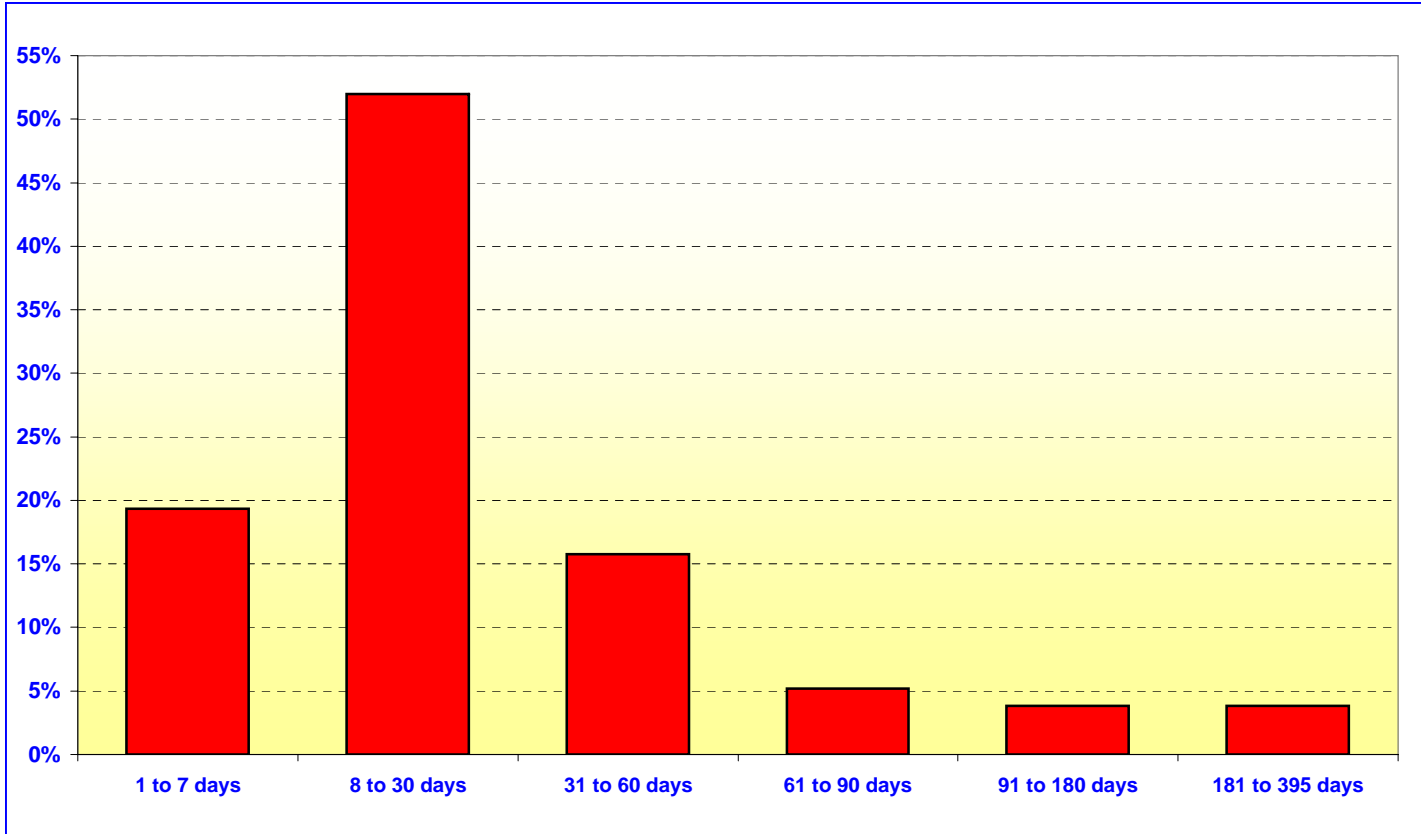
	In Thousands
CERTIFICATES OF DEPOSIT	\$ 9,992
COMMERCIAL PAPER	20,126
U.S. GOVERNMENT AGENCIES	19,631
MONEY MARKET FUNDS	<u>2,033</u>
TOTAL	<u>\$ 51,782</u>

Investment Composition Is In Compliance With The Orange County Treasurer's Investment Policy Statement

*** Calculated Using Market Value at 04/30/2006*

ORANGE COUNTY TREASURER - TAX COLLECTOR
JOHN WAYNE AIRPORT INVESTMENT POOL
MATURITIES DISTRIBUTION

April 30, 2006



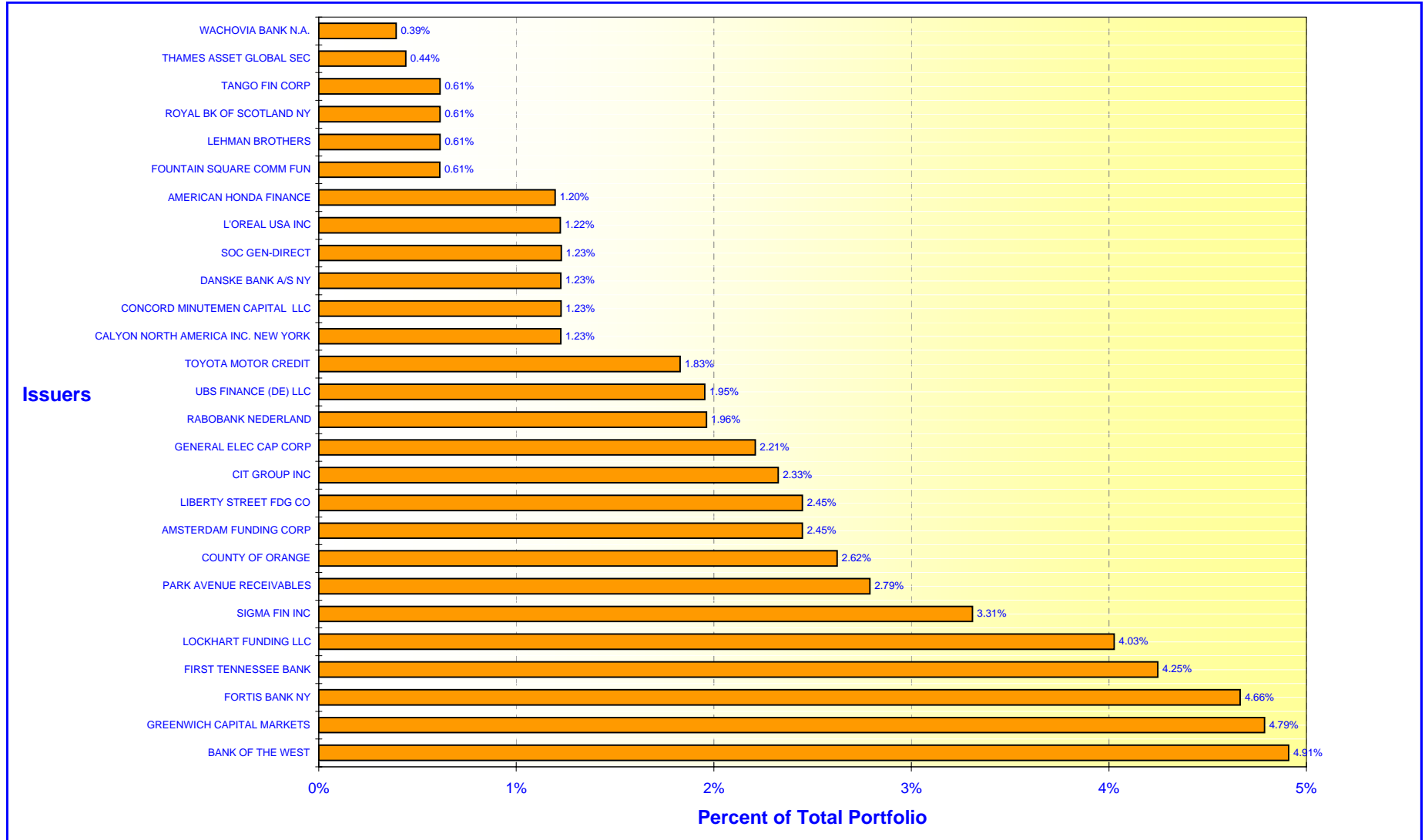
JOHN WAYNE AIRPORT		
	In Thousands	%
1 TO 7 DAYS	\$10,033	19.32%
8 TO 30 DAYS	27,000	51.99%
31 TO 60 DAYS	8,200	15.79%
61 TO 90 DAYS	2,700	5.20%
91 TO 180 DAYS	2,000	3.85%
181 TO 395 DAYS	<u>2,000</u>	<u>3.85%</u>
TOTAL	<u><u>\$51,933</u></u>	<u><u>100.00%</u></u>

Maturity Limits Are In Compliance With The Orange County Treasurer's Investment Policy Statement

ORANGE COUNTY TREASURER - TAX COLLECTOR

ORANGE COUNTY INVESTMENT POOL - ISSUER CONCENTRATION

April 30, 2006



ORANGE COUNTY TREASURER - TAX COLLECTOR

EDUCATIONAL INVESTMENT POOL - ISSUER CONCENTRATION

April 30, 2006

