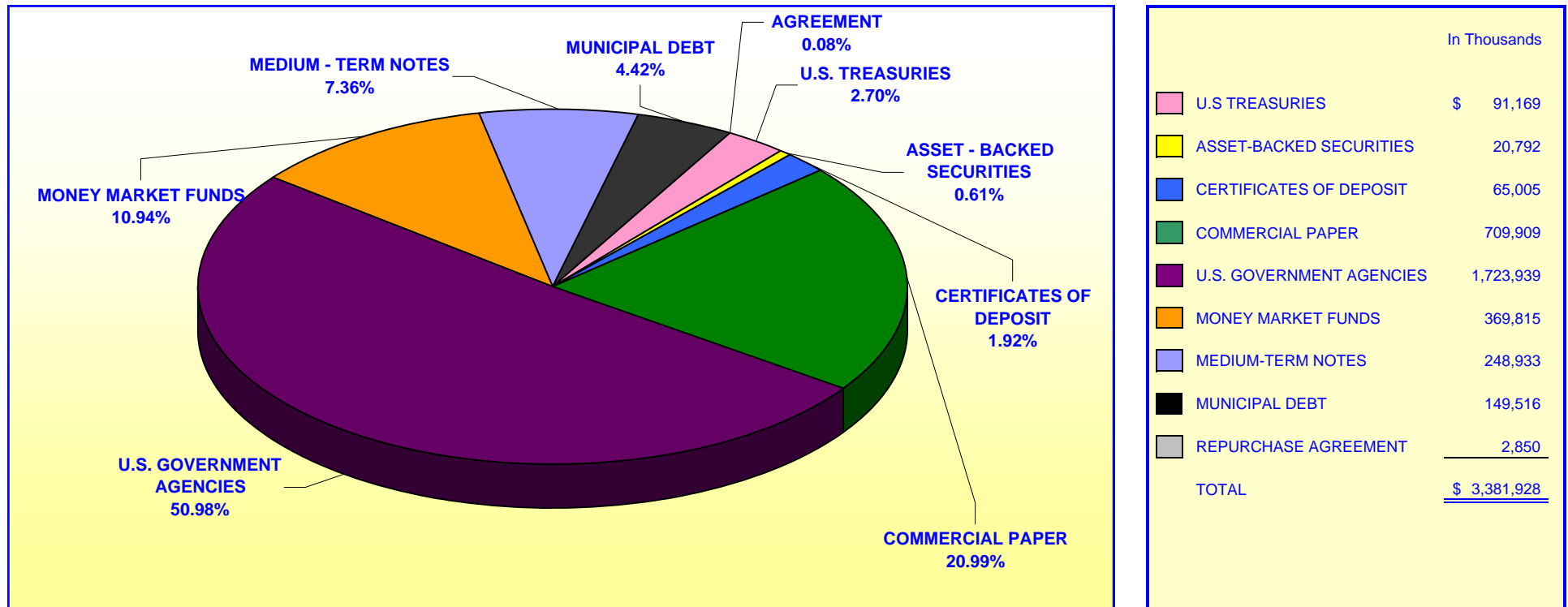


**ORANGE COUNTY TREASURER - TAX COLLECTOR  
ORANGE COUNTY INVESTMENT POOL  
PORTFOLIO COMPOSITION - COMBINED \*\***

**October 31, 2009**



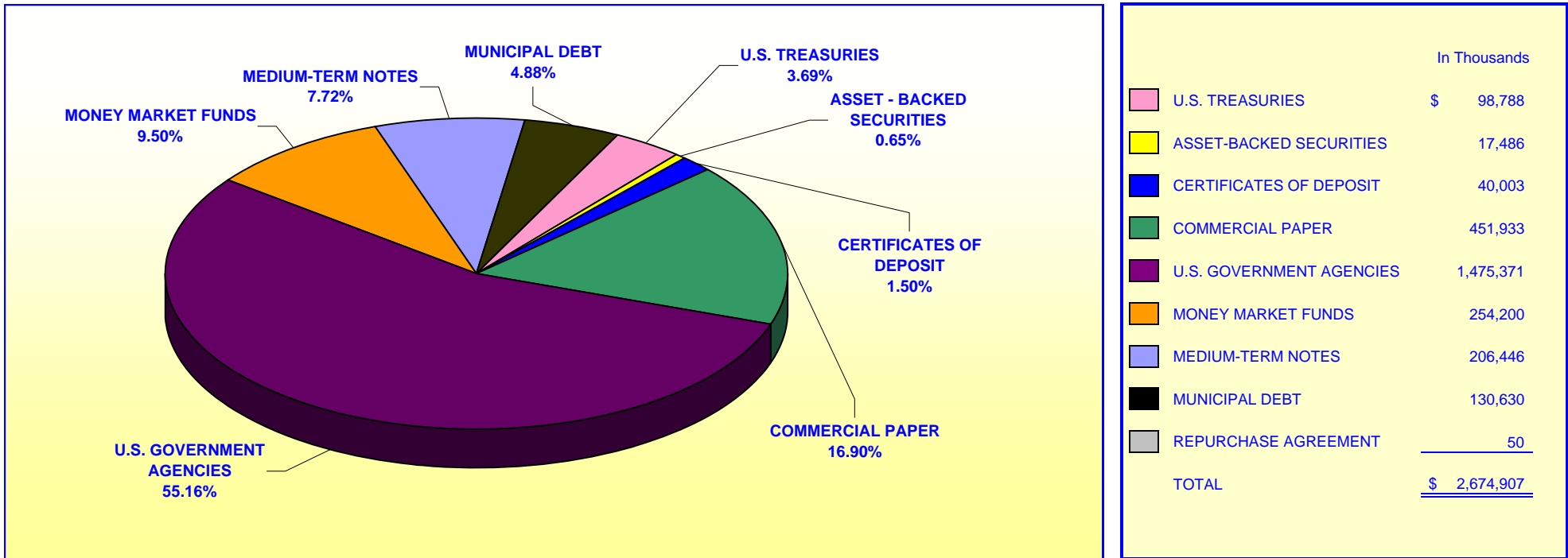
*Investment Composition Is In Compliance With The Orange County Treasurer's Investment Policy Statement*

*\*County Investment Pool Includes: Money Market Fund, Extended Fund, & Extended Fund B*

*\*\* Calculated Using Market Value at 10/31/2009*

**ORANGE COUNTY TREASURER - TAX COLLECTOR  
ORANGE COUNTY EDUCATIONAL INVESTMENT POOL  
PORTFOLIO COMPOSITION - COMBINED \*\***

**October 31, 2009**



*Investment Composition Is In Compliance With The Orange County Treasurer's Investment Policy Statement*

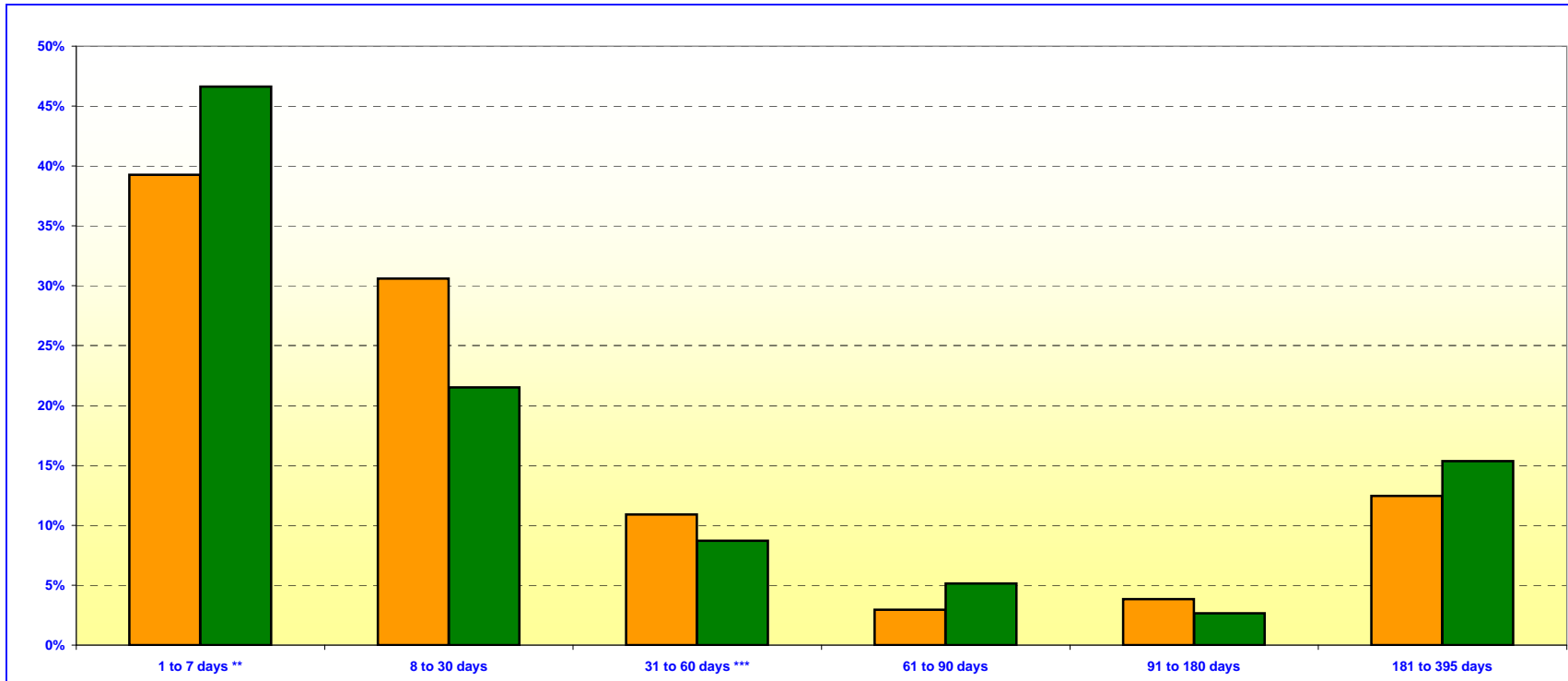
*\*Educational Investment Pool Includes: Money Market Fund, Extended Fund, & Extended Fund B*

*\*\* Calculated Using Market Value at 10/31/2009*

**ORANGE COUNTY TREASURER - TAX COLLECTOR**  
**ORANGE COUNTY MONEY MARKET FUND AND EDUCATIONAL MONEY MARKET FUND**

**MATURITIES DISTRIBUTION**

October 31, 2009



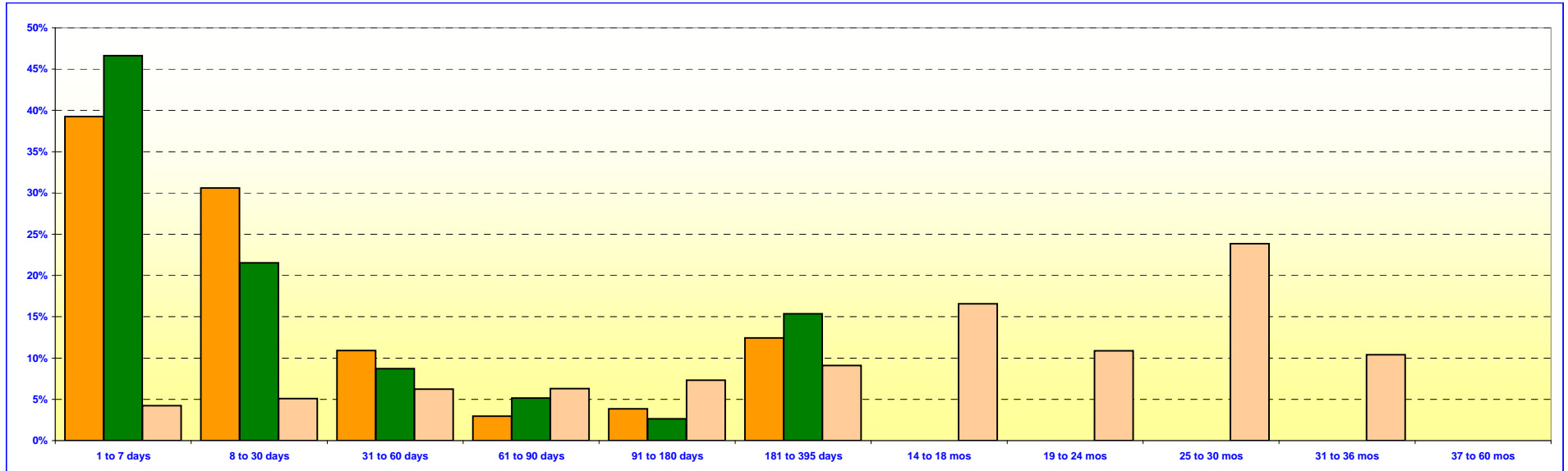
<b>O.C. INVESTMENT POOL MONEY MARKET FUND</b>		
	In Thousands	%
1 TO 7 DAYS	\$ 834,470	39.26%
8 TO 30 DAYS	650,182	30.59%
31 TO 60 DAYS	231,575	10.90%
61 TO 90 DAYS	63,014	2.96%
91 TO 180 DAYS	81,552	3.84%
181 TO 395 DAYS	264,565	12.45%
<b>TOTAL</b>	<b>\$ 2,125,358</b>	<b>100.00%</b>

<b>O.C. EDUCATIONAL MONEY MARKET FUND</b>		
	In Thousands	%
1 TO 7 DAYS	\$ 615,551	46.62%
8 TO 30 DAYS	284,220	21.53%
31 TO 60 DAYS	114,950	8.71%
61 TO 90 DAYS	67,820	5.14%
91 TO 180 DAYS	35,000	2.65%
181 TO 395 DAYS	202,664	15.35%
<b>TOTAL</b>	<b>\$ 1,320,205</b>	<b>100.00%</b>

***Maturity Limits Are In Compliance With The Orange County Treasurer's Investment Policy Statement***

Floating Rate Notes are deemed to have a maturity date equal to their next interest reset date.  
 At 10/31/2009 Floating Rate Notes comprise 18.43% and 23.07% of the O.C. Money Market Fund and Educational Money Market Fund respectively.

**ORANGE COUNTY TREASURER - TAX COLLECTOR  
ORANGE COUNTY AND EDUCATIONAL INVESTMENT POOLS  
MATURITIES DISTRIBUTION  
October 31, 2009**



O.C. INVESTMENT POOL MONEY MARKET FUND		
	In Thousands	%
1 TO 7 DAYS	\$ 834,470	39.26%
8 TO 30 DAYS	650,182	30.59%
31 TO 60 DAYS	231,575	10.90%
61 TO 90 DAYS	63,014	2.96%
91 TO 180 DAYS	81,552	3.84%
181 TO 395 DAYS	264,565	12.45%
<b>TOTAL</b>	<b>\$ 2,125,358</b>	<b>100.00%</b>

O.C. EDUCATIONAL MONEY MARKET FUND		
	In Thousands	%
1 TO 7 DAYS	\$ 615,551	46.62%
8 TO 30 DAYS	284,220	21.53%
31 TO 60 DAYS	114,950	8.71%
61 TO 90 DAYS	67,820	5.14%
91 TO 180 DAYS	35,000	2.65%
181 TO 395 DAYS	202,664	15.35%
<b>TOTAL</b>	<b>\$ 1,320,205</b>	<b>100.00%</b>

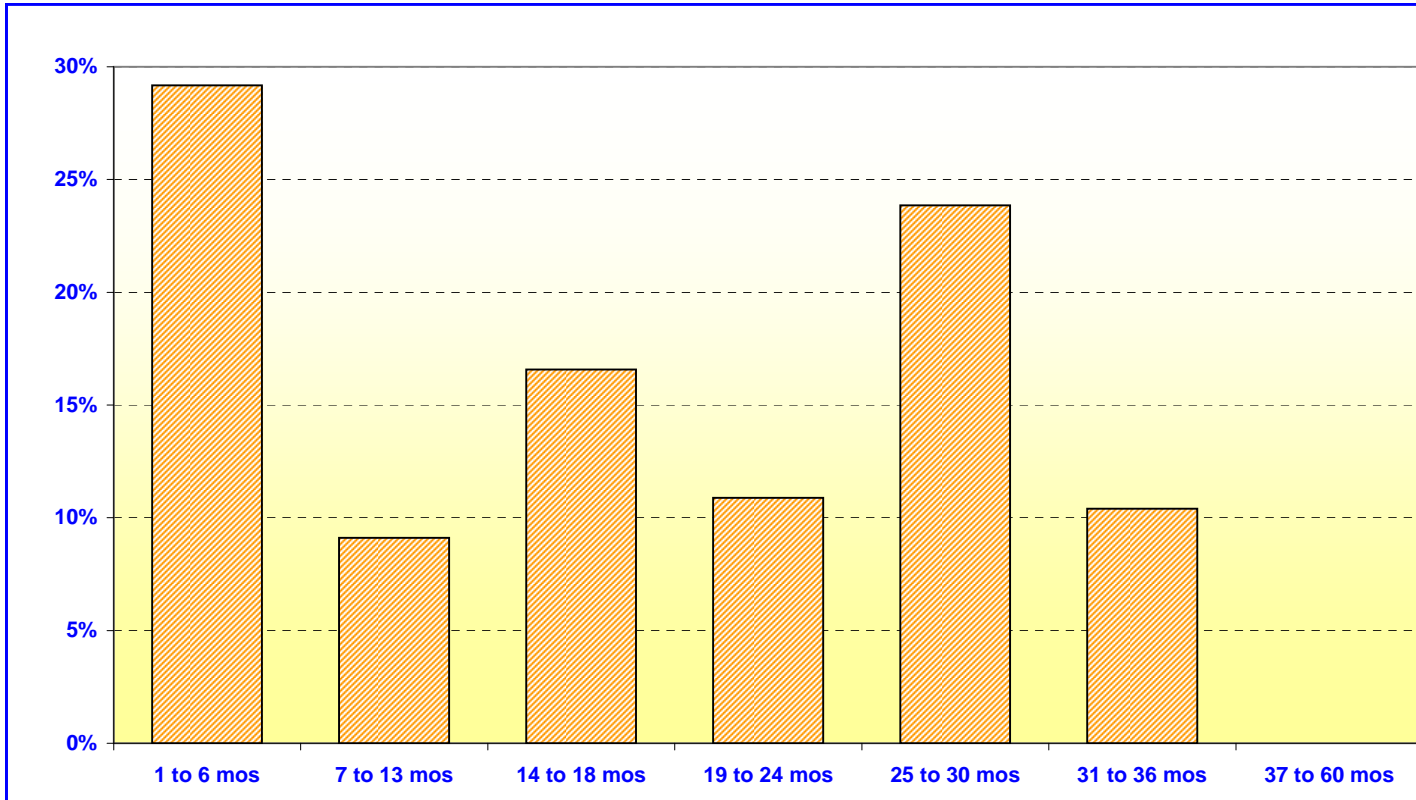
O.C. INVESTMENT POOL EXTENDED FUND (Included Extended Fund B)		
	In Thousands	%
1 TO 7 DAYS	\$ 110,000	4.24%
8 TO 30 DAYS	132,300	5.10%
31 TO 60 DAYS	161,500	6.22%
61 TO 90 DAYS	163,438	6.30%
91 TO 180 DAYS	190,000	7.32%
181 TO 395 DAYS	236,420	9.11%
14 TO 18 MONTHS	430,000	16.57%
19 TO 24 MONTHS	282,450	10.88%
25 TO 30 MONTHS	619,325	23.86%
31 TO 36 MONTHS	270,000	10.40%
37 TO 60 MONTHS	-	0.00%
<b>TOTAL</b>	<b>\$ 2,595,433</b>	<b>100.00%</b>

*Maturity Limits Are In Compliance With The Orange County Treasurer's Investment Policy Statement*

Floating Rate Notes are deemed to have a maturity date equal to their next interest reset date.  
At 10/31/2009, Floating Rate Notes comprise 18.43%, 11.5%, and 23.7% of the O.C. Investment Pool, Extended Funds, and Educational Money Market Fund respectively.



**ORANGE COUNTY TREASURER - TAX COLLECTOR**  
**ORANGE COUNTY - EXTENDED FUND**  
**MATURITIES DISTRIBUTION**  
**October 31, 2009**



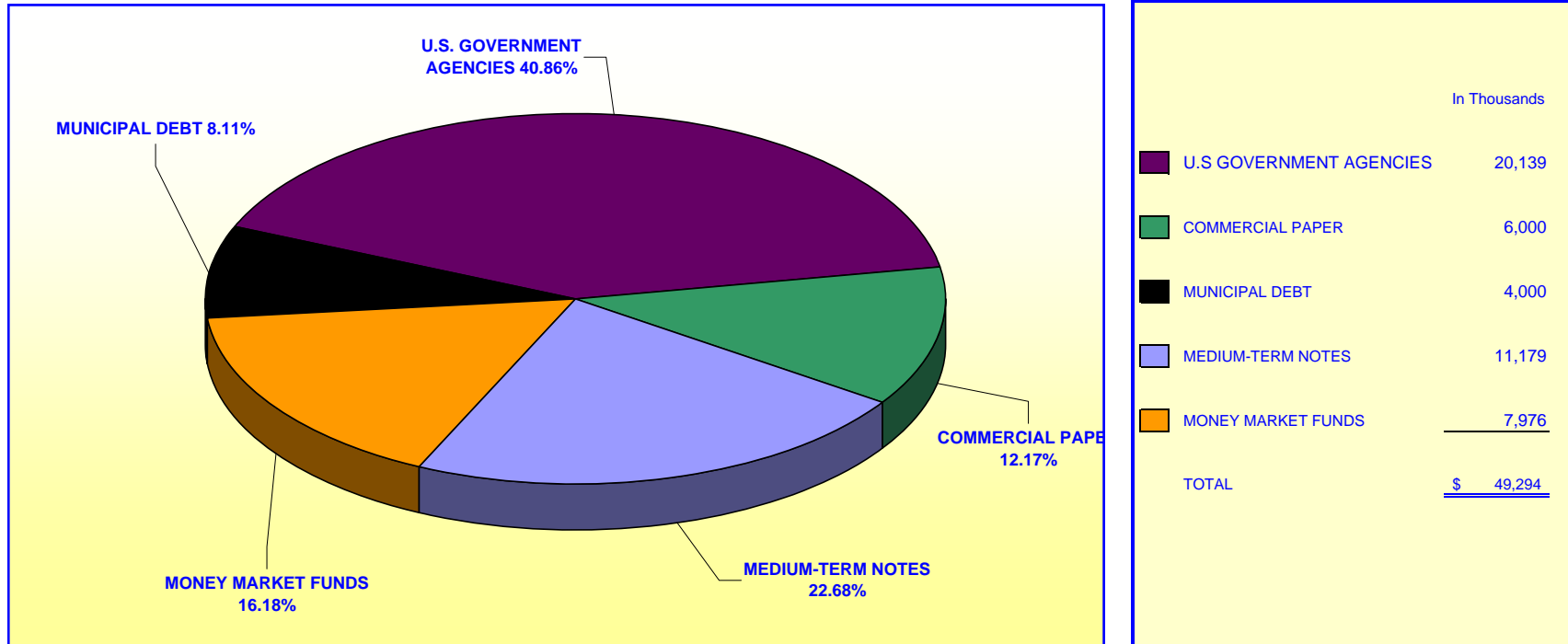
<b>ORANGE COUNTY EXTENDED FUND</b> (includes Extended Fund B)		
	In Thousands	%
1 TO 6 MOS	\$ 757,238	29.18%
7 TO 13 MOS	236,420	9.11%
14 TO 18 MOS	430,000	16.57%
19 TO 24 MOS	282,450	10.88%
25 TO 30 MOS	619,325	23.86%
31 TO 36 MOS	270,000	10.40%
37 TO 60 MOS	-	0.00%
<b>TOTAL</b>	<u>\$ 2,595,433</u>	<u>100.00%</u>

***Maturity Limits Are In Compliance With The Orange County Treasurer's Investment Policy Statement***

Floating Rate Notes are deemed to have a maturity date equal to their next interest reset date.  
 At 10/31/2009, Floating Rate Notes comprise 11.50% of the O.C. Extended Fund.

**ORANGE COUNTY TREASURER - TAX COLLECTOR  
JOHN WAYNE AIRPORT INVESTMENT POOL  
PORTFOLIO COMPOSITION \*\***

October 31, 2009



*Investment Composition Is In Compliance With The Orange County Treasurer's Investment Policy Statement*

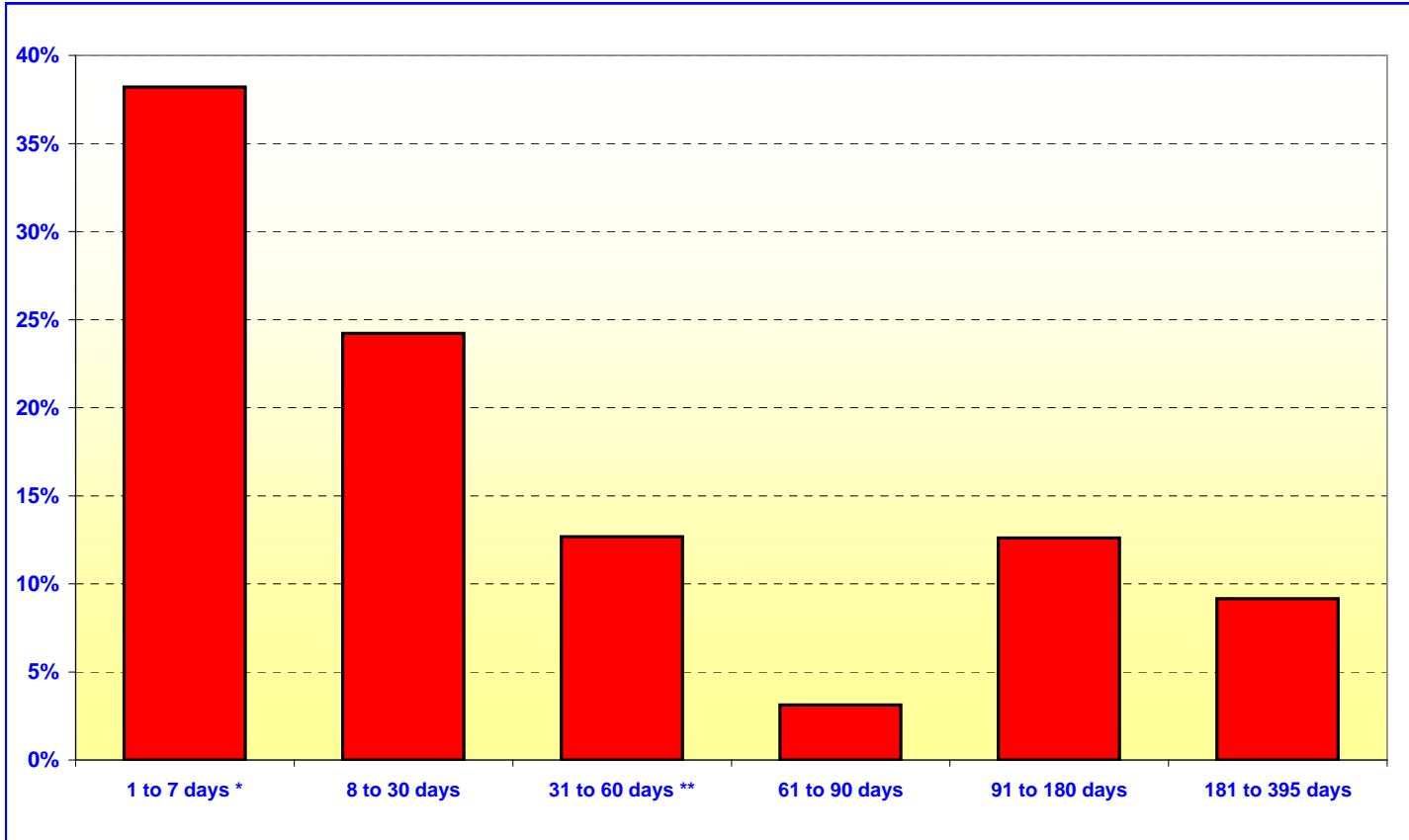
*\*\* Calculated Using Market Value at 10/31/2009*

**ORANGE COUNTY TREASURER - TAX COLLECTOR**

**JOHN WAYNE AIRPORT INVESTMENT POOL**

**MATURITIES DISTRIBUTION**

October 31, 2009



JOHN WAYNE AIRPORT			
	In Thousands		%
1 TO 7 DAYS	\$ 18,776		38.21%
8 TO 30 DAYS	11,903		24.22%
31 TO 60 DAYS	6,230		12.68%
61 TO 90 DAYS	1,532		3.12%
91 TO 180 DAYS	6,195		12.61%
181 TO 395 DAYS	4,500		9.16%
<b>TOTAL</b>	<b>\$ 49,136</b>		<b>100.00%</b>

*Maturity Limits Are In Compliance With The Orange County Treasurer's Investment Policy Statement*

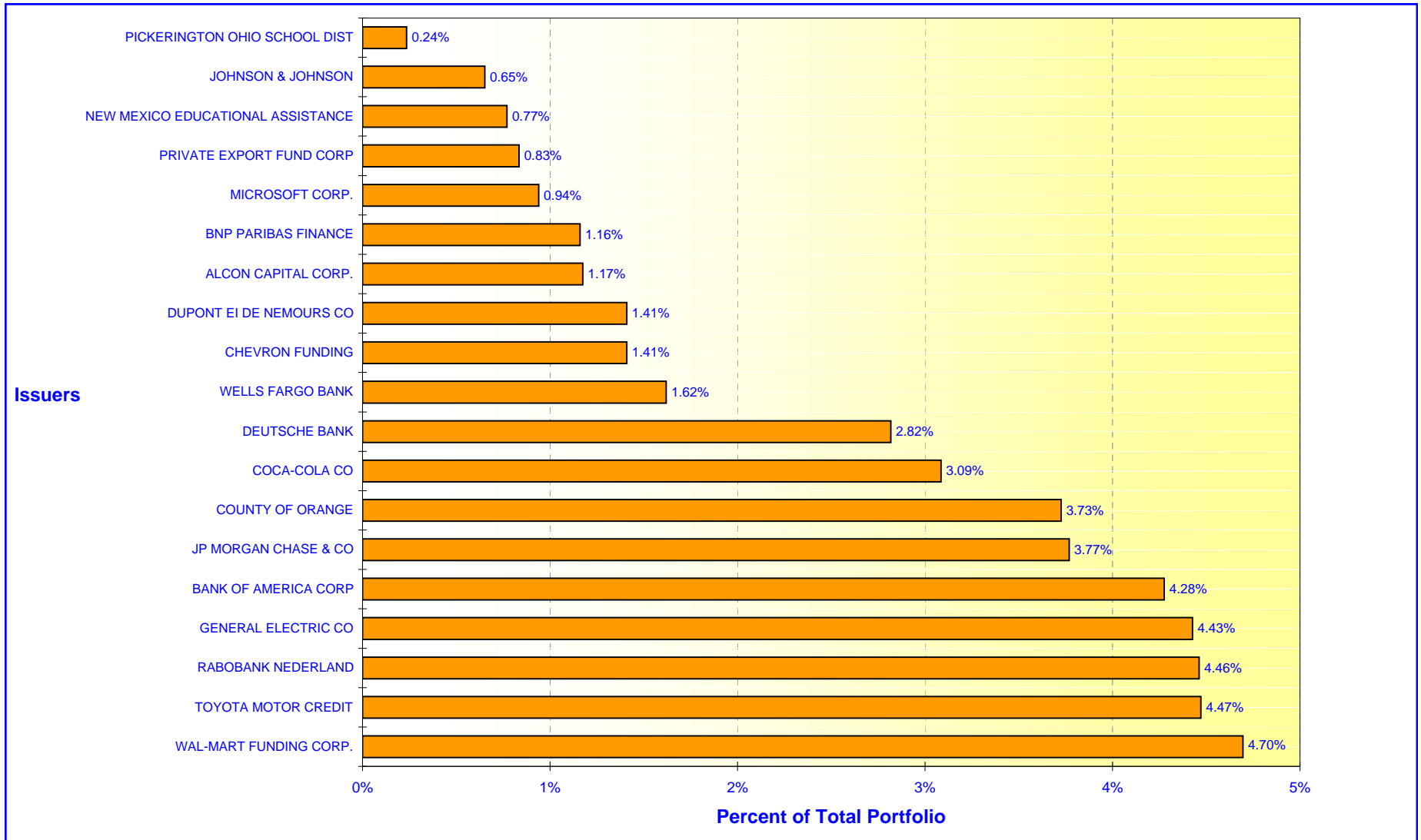
Floating Rate Notes are deemed to have a maturity date equal to their next interest reset date.  
 At 10/31/2009, Floating Rate Notes comprise 25.5% of the John Wayne Airport



# ORANGE COUNTY TREASURER - TAX COLLECTOR

## ORANGE COUNTY MONEY MARKET FUND - ISSUER CONCENTRATION

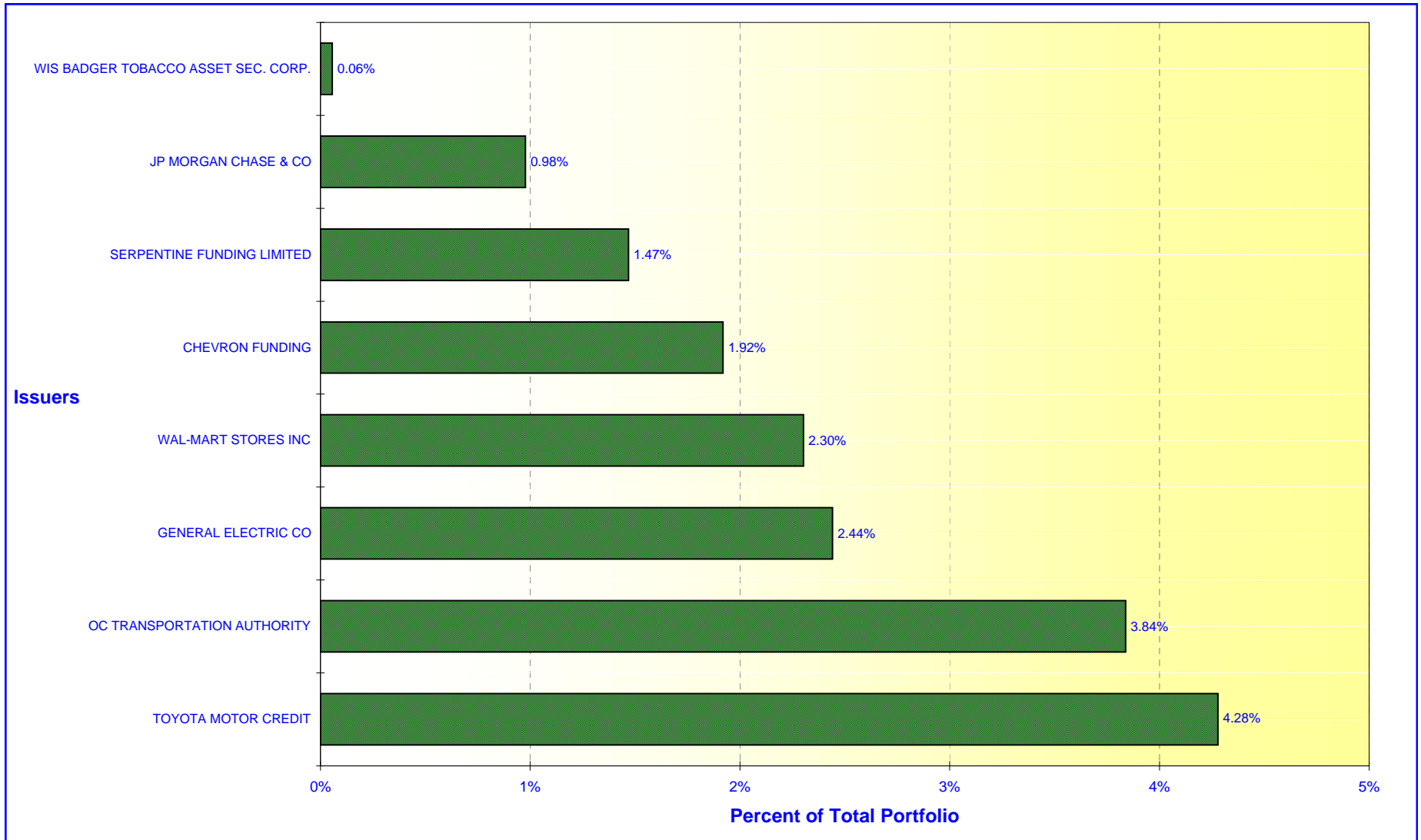
October 31, 2009



# ORANGE COUNTY TREASURER - TAX COLLECTOR

## ORANGE COUNTY EXTENDED FUND - ISSUER CONCENTRATION

October 31, 2009



Note: Extended Fund includes Extended Fund B

# ORANGE COUNTY TREASURER - TAX COLLECTOR

## EDUCATIONAL MONEY MARKET FUND - ISSUER CONCENTRATION

October 31, 2009

