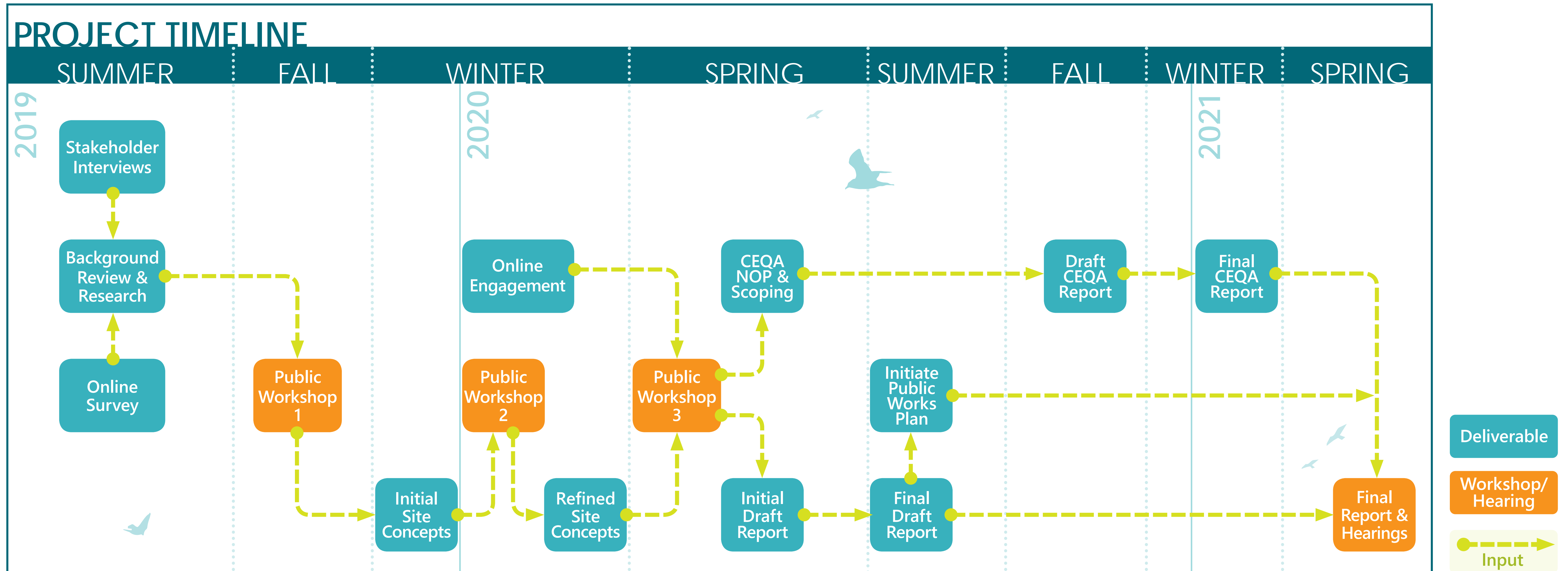


HISTORY OF CAPISTRANO BEACH

Development began in Capistrano Beach in the late 1920s with the construction of a pier, the Capistrano Beach Club, and homes along Beach Road. For the next thirty years, these structures contributed to the development of the area's identity. By the late 1960s the pier had been damaged by storms and removed; the Capistrano Beach Club was demolished not long after. The County of Orange acquired the site in 1979 and Capistrano Beach Park opened to the public in 1980.



PROJECT TIMELINE



The Master Plan Will...

Ensure sustainable public coastal access at Capistrano Beach

- Engage the public to ensure the plan meets community needs to the greatest extent possible
- Incorporate technical information
- Achieve consensus with involved agencies, including the City of Dana Point, OC Board of Supervisors and the California Coastal Commission

Include a design concept and technical information to support OC Parks in:

- Meeting regulatory requirements
- Phasing future design, construction, and implementation efforts
- Securing future funding
- Building relationships with agencies in the region that share OC Parks' challenges and goals

SAND MOVEMENT ALONG THE SHORELINE

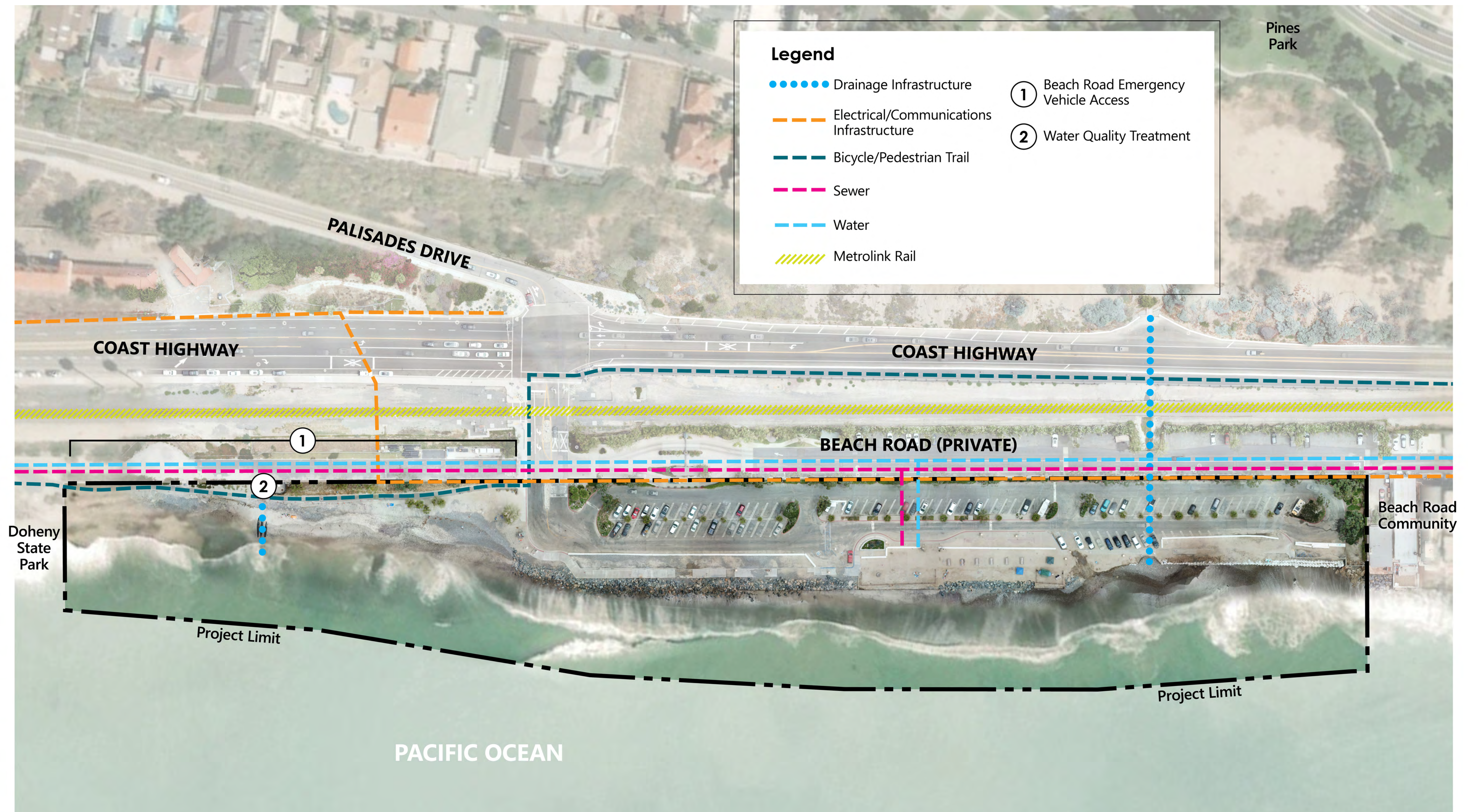
Capistrano Beach is currently in a sand *deficit* condition of approximately 50,000 CY per year. More sand is being lost than is being input.



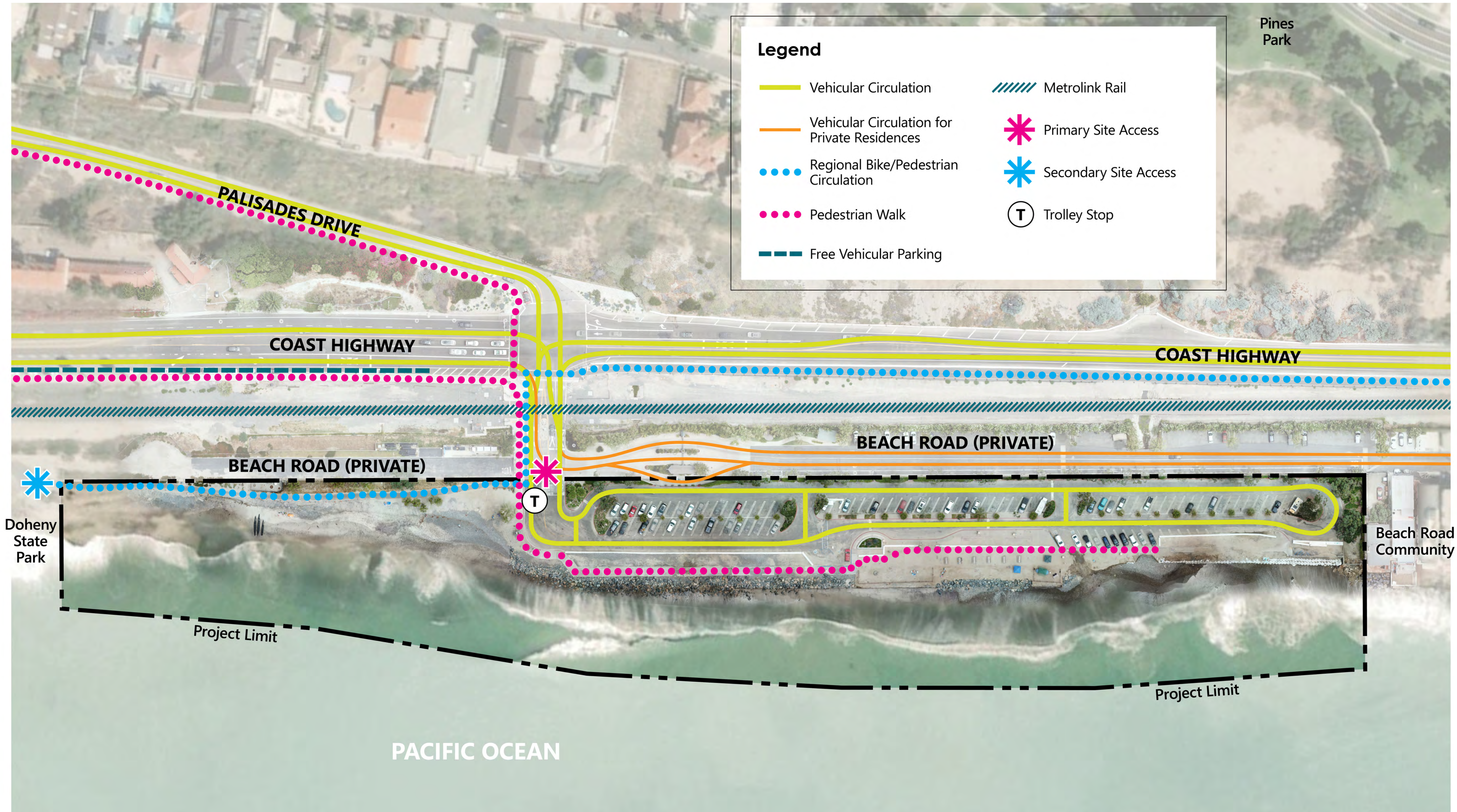
EXISTING CONDITIONS AT CAPISTRANO BEACH PARK



INFRASTRUCTURE AT CAPISTRANO BEACH PARK



CIRCULATION AT CAPISTRANO BEACH PARK



ADAPTATION TOOLKIT

Overview

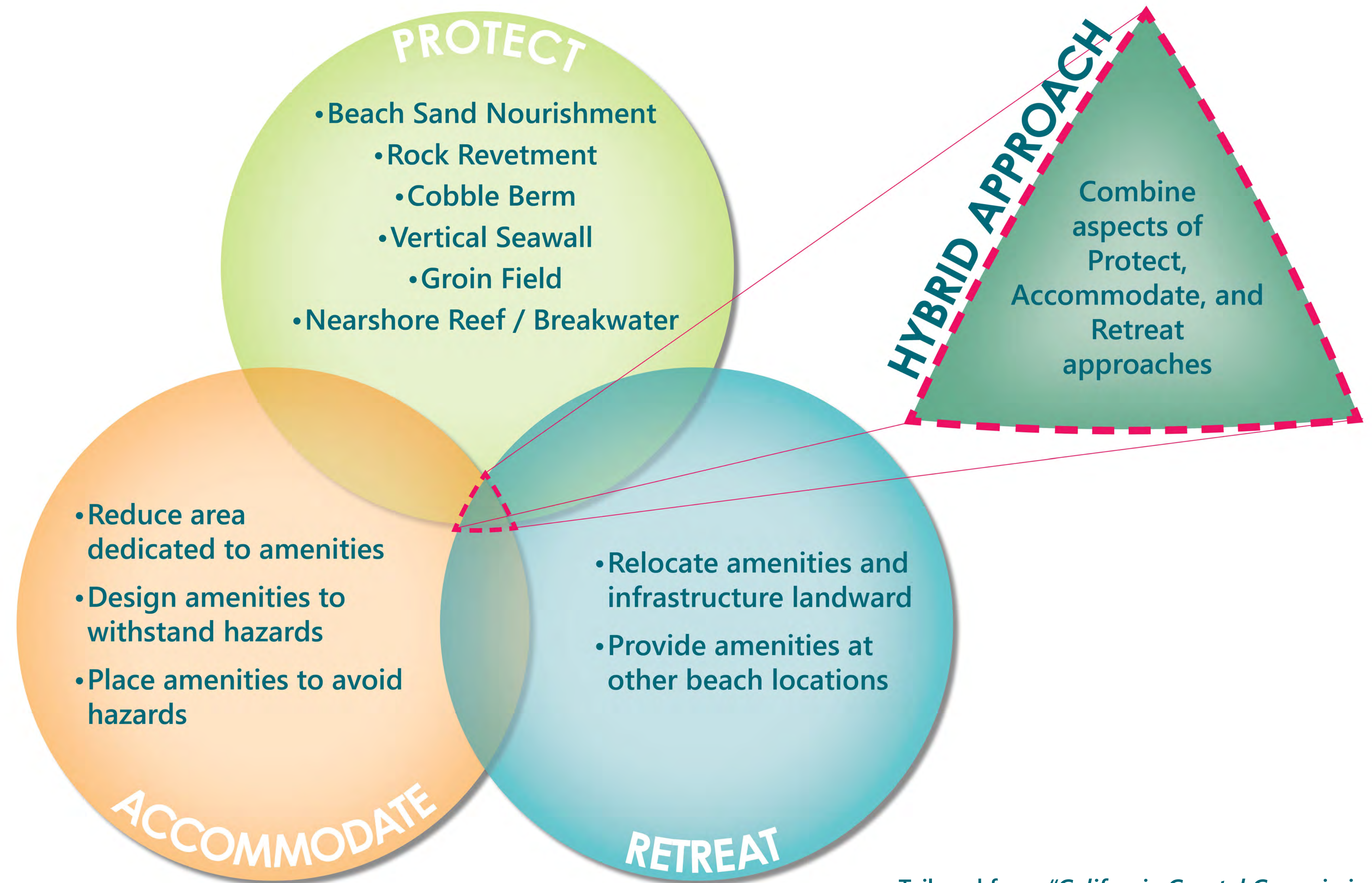
There are a variety of proactive adaptation strategies that address the impacts of coastal hazards at Capistrano Beach Park.

The California Coastal Commission groups these strategies into three categories:

- **Protect:** Employing a structure or other measure to protect a site and its amenities in place
- **Accommodate:** Adapting the project site and/or its amenities to withstand or avoid hazards
- **Retreat:** Relocating project elements away from hazards

Using multiple strategies from each of these categories can be useful in achieving multiple objectives:

- **Hybrid Approach:** Combining two or more strategies from the Protect, Accommodate, and/or Retreat categories



Tailored from "California Coastal Commission Sea Level Rise Policy Guidance" (2018)

REGULATORY REQUIREMENTS

The Capistrano Beach Park Master Plan will need to meet many regulatory requirements to attain final approval prior to implementation.

Although actual requirements will be determined by the Plan's final content, it is likely the Plan will need permits from many federal, state, and local agencies.

Permit/Approvals from:

California Coastal Commission

(incl. California Department of Fish & Wildlife)

U.S. Army Corps of Engineers

(incl. NOAA National Marine Fisheries Service, U.S. Fish & Wildlife Service, U.S. EPA for sand placement)

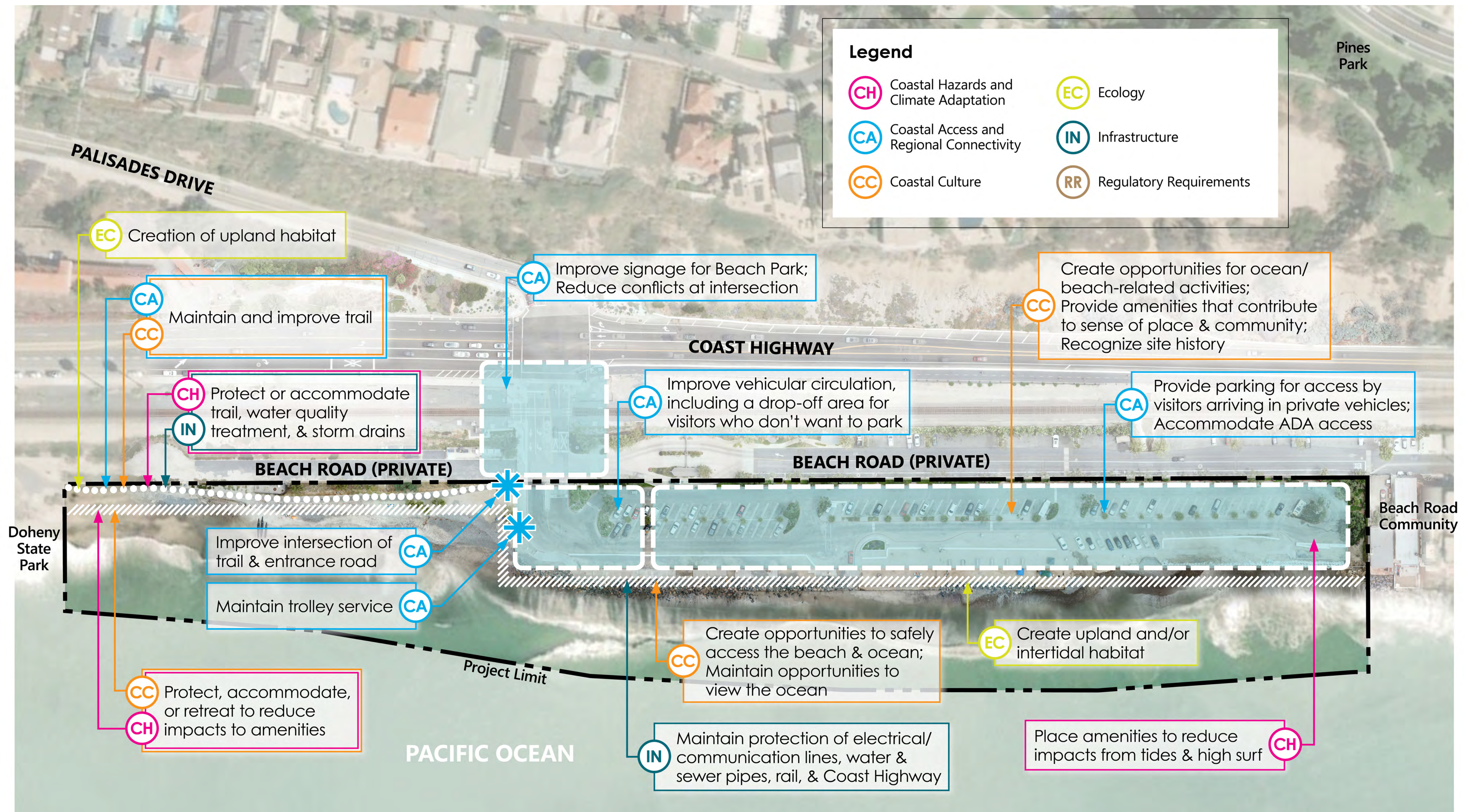
Regional Water Quality Control Board

California State Lands Commission

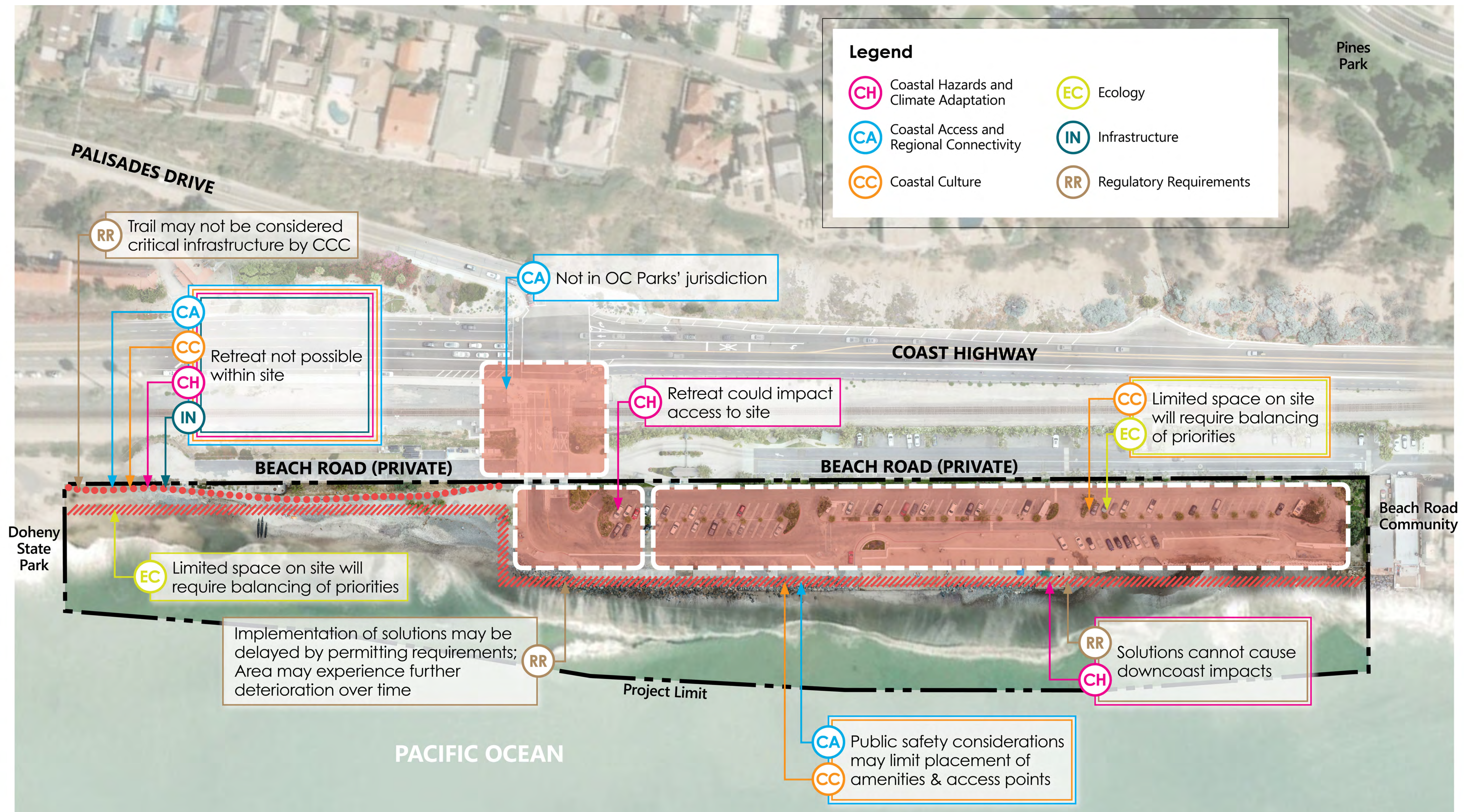
CEQA Review

Consistency with City of Dana Point Local Coastal Program

OPPORTUNITIES AT CAPISTRANO BEACH PARK



CONSTRAINTS AT CAPISTRANO BEACH PARK

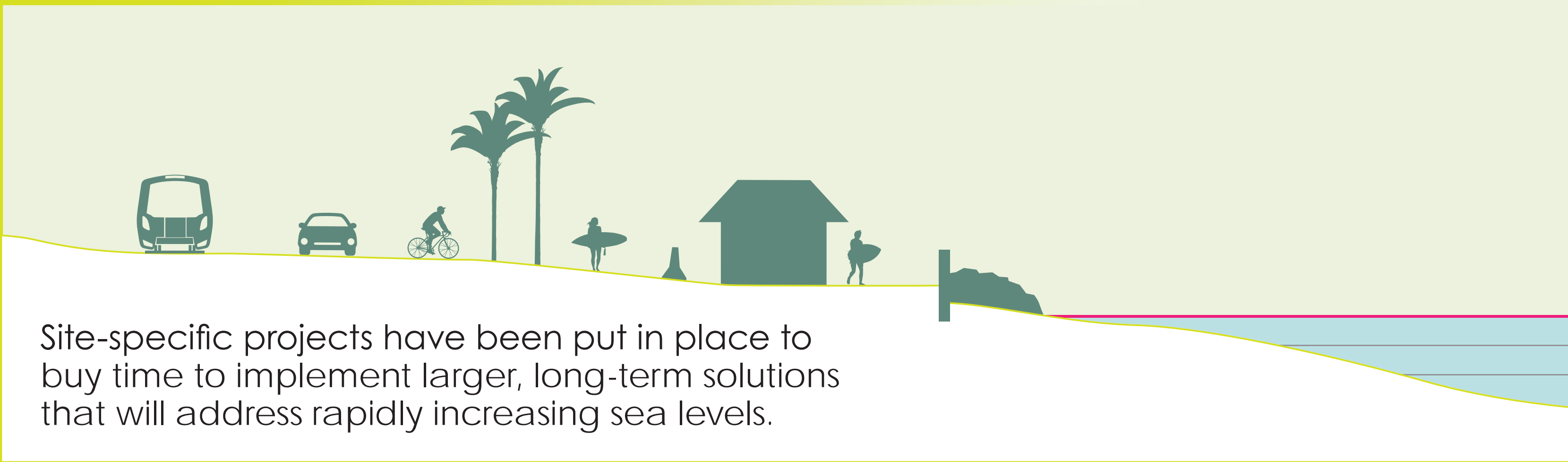


PHASED ADAPTATION AT CAPISTRANO BEACH CAN ENSURE CONTINUED PUBLIC COASTAL ACCESS

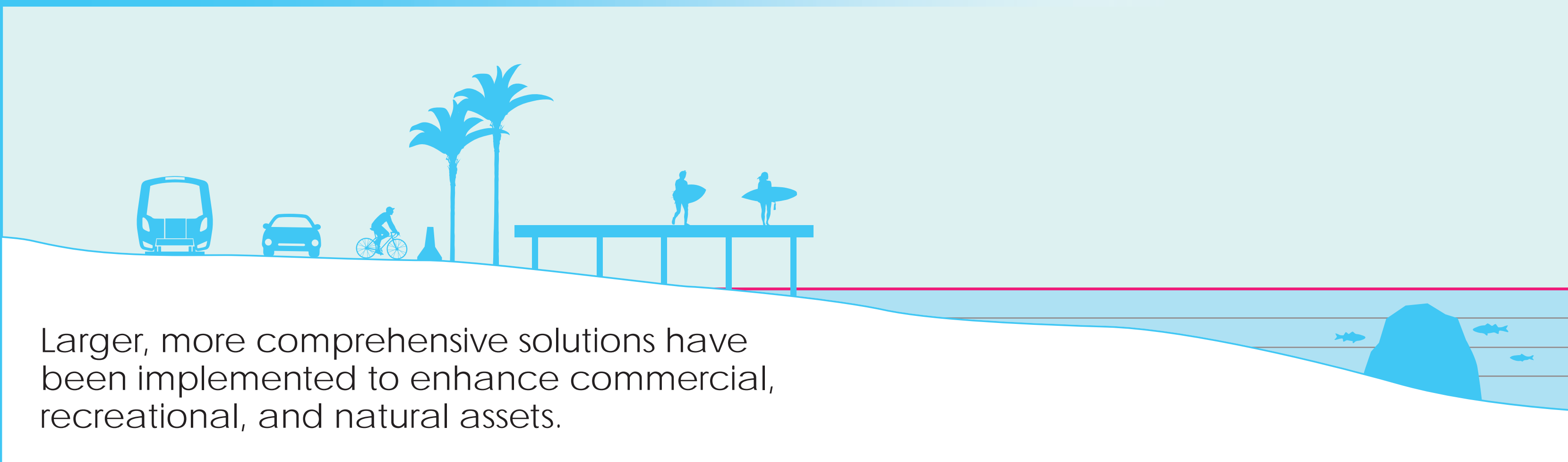
SHORT-TERM OUTCOMES: 2020-2022



MID-TERM OUTCOMES: 2022-2050



LONG-TERM OUTCOMES: 2050-ONGOING

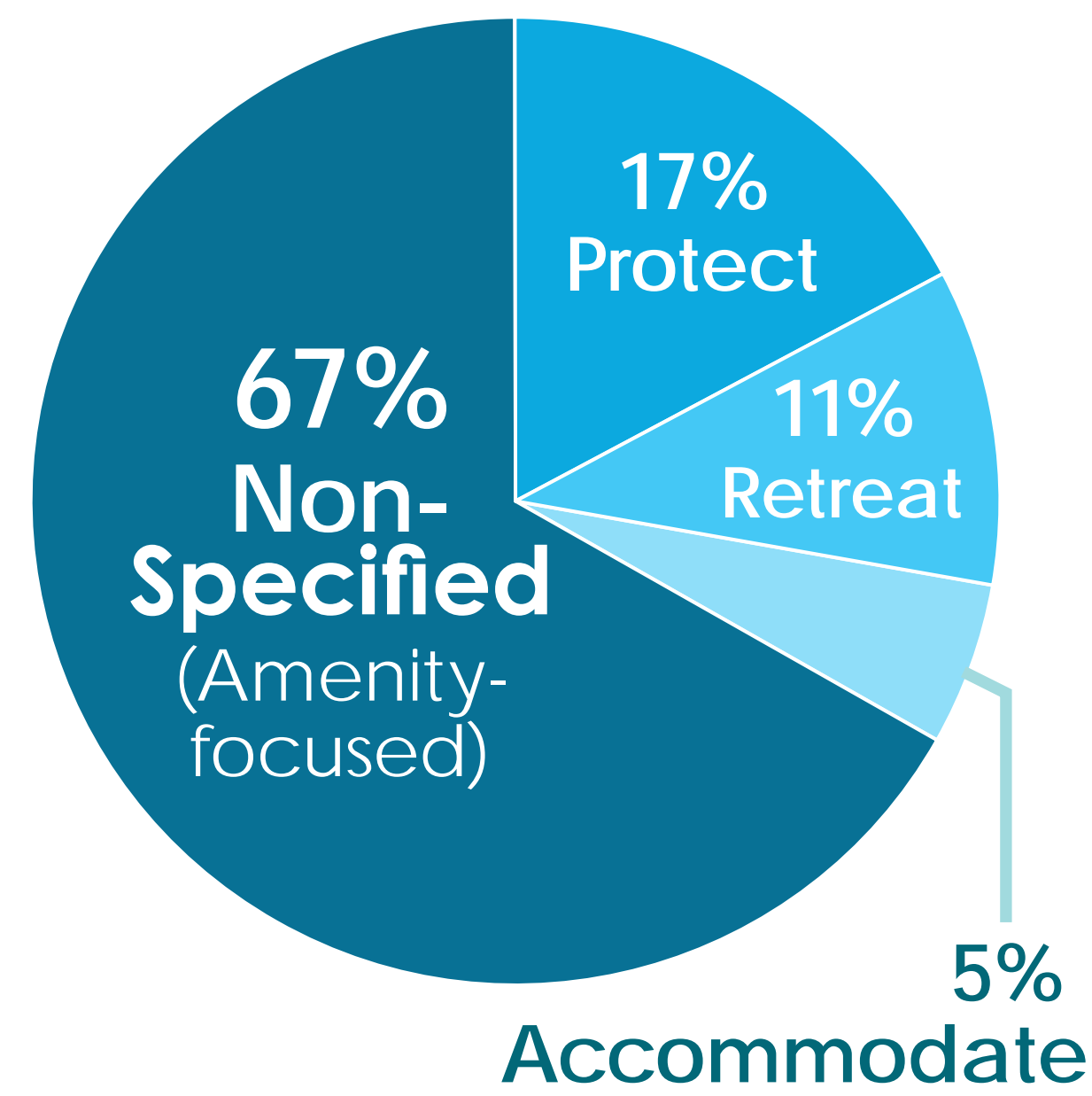


		ACTION		
TIMELINE	●	Emergency Protection + Accessibility Management • Rock Revetment • Sand Cubes	Beach Master Plan • Selected Alternative • Adaptive Feature • Monitoring	Regional Collaboration • Nearshore Reef • Beach Nourishment • Infrastructure Adaptation
	●			
	●			

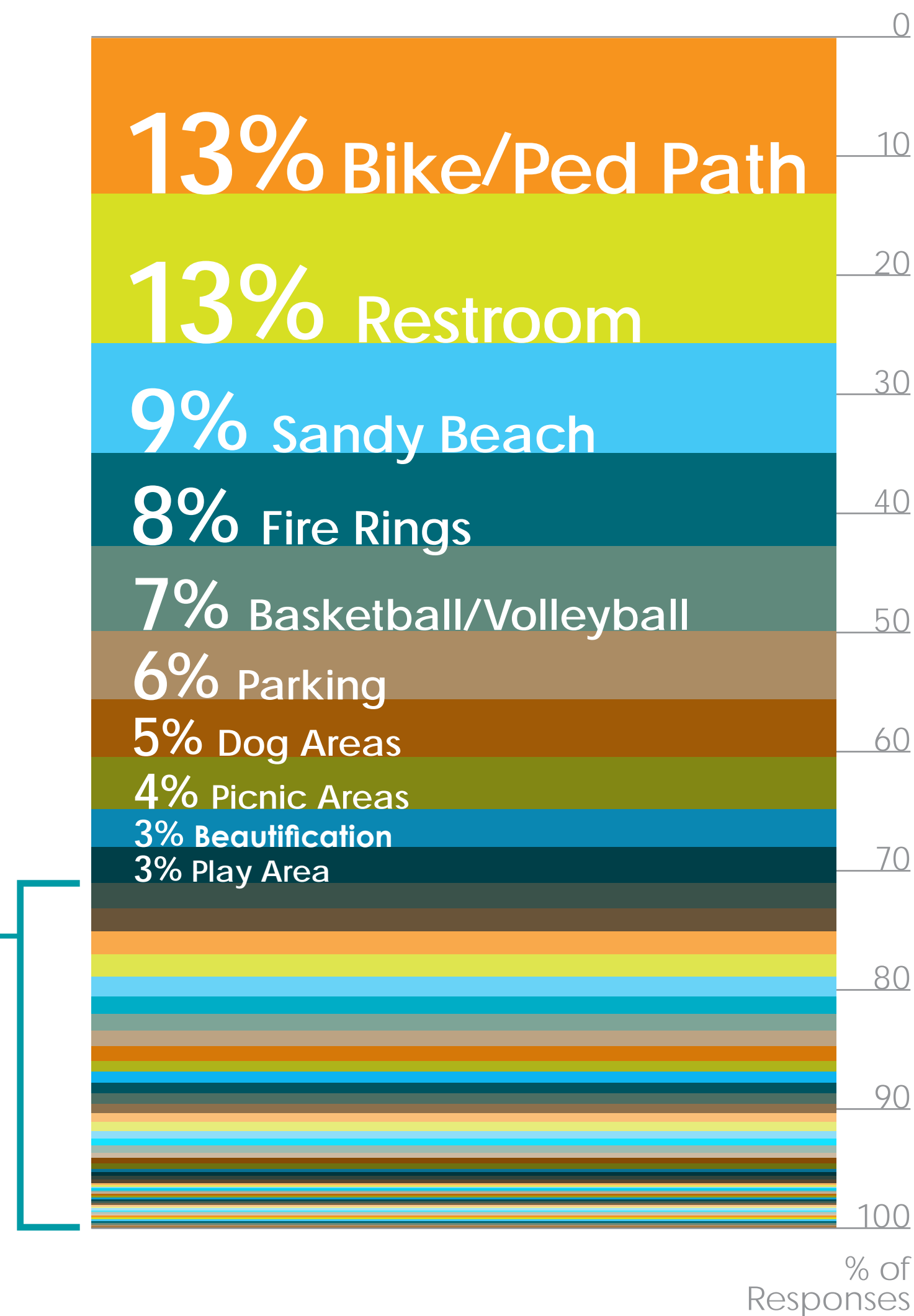
WHAT WE'VE HEARD SO FAR

ONLINE SURVEY

Adaptation Method Prioritization



Amenity Prioritization

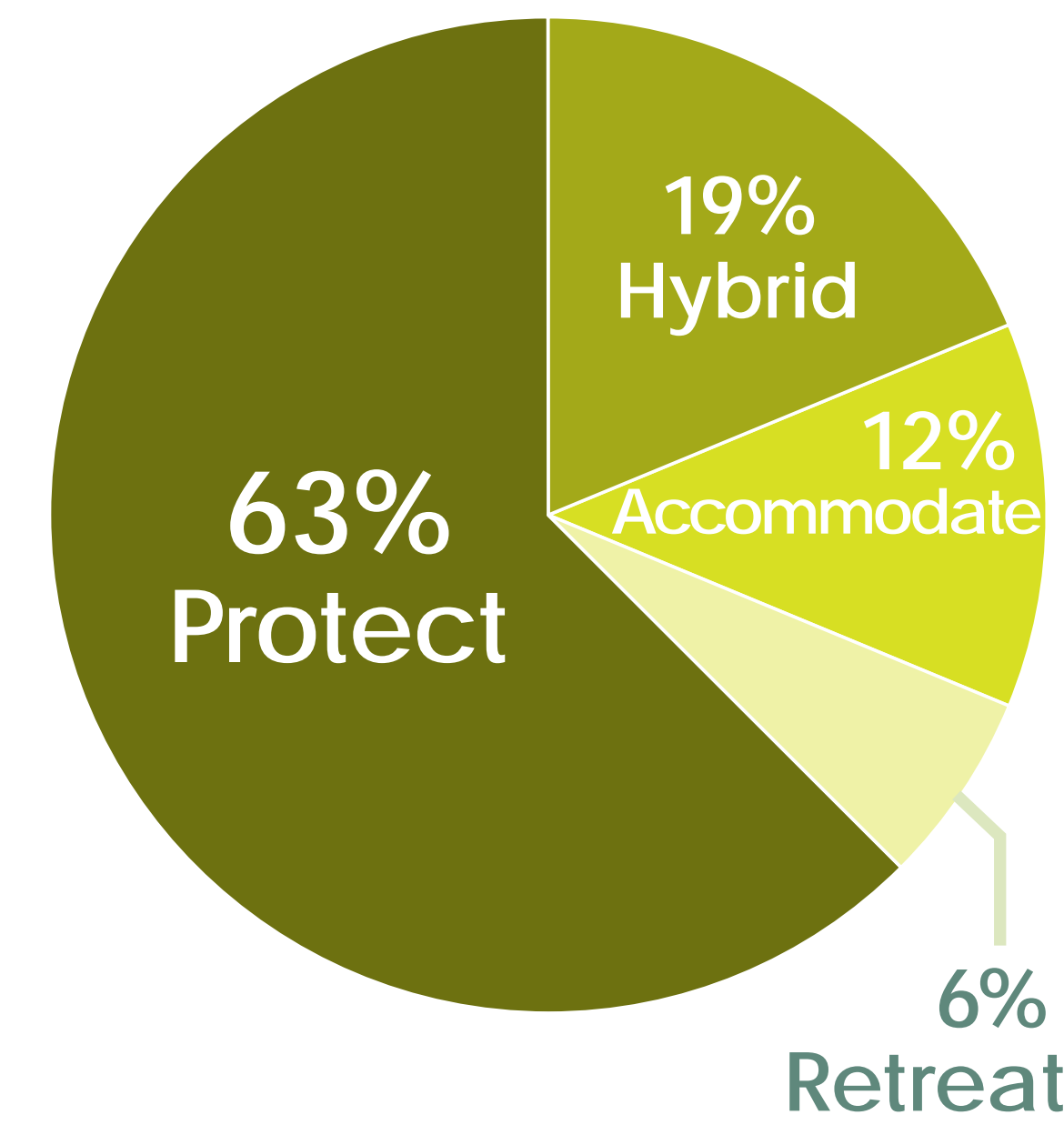


Other Responses: (2% or less each)

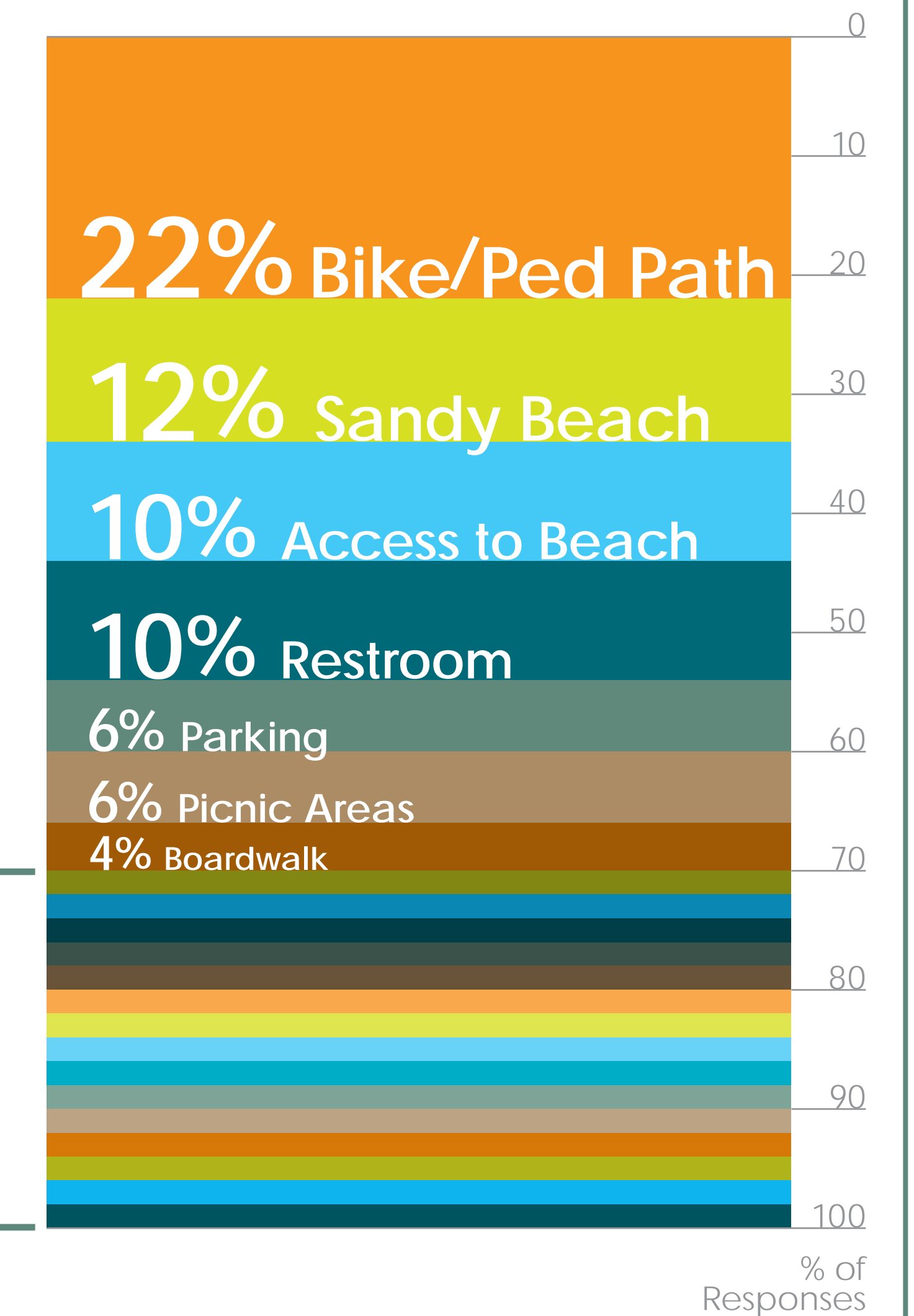
- Access to Beach
- BBQ
- Benches
- Boardwalk
- Don't Waste Money
- Eliminate Parking
- Jetties
- Leave It As Is
- Less Parking
- Water Fountain
- No Dogs
- Safety - Car/Ped/Bike Conflicts
- Safety - Drugs
- Safety - Homeless
- Seawall
- Snack Bar
- Showers
- The Way It Was

PUBLIC WORKSHOP 1

Adaptation Method Prioritization



Amenity Prioritization



Other Responses: (2% or less each)

- Basketball / Volleyball Courts
- Beautification / Landscaping
- Catamaran Launch Area
- Children's Sandbox
- Dog Areas
- Fire Pit
- Fishing Access
- Interpretive Elements
- Jetty
- Offshore Reef
- Protect Ecology
- Pump Track
- Safe Crossing
- Trolley / Bus Stop
- Viewing Area

WHAT WE'VE HEARD SO FAR

Community's Responses to Questions (From Public Workshop 1)

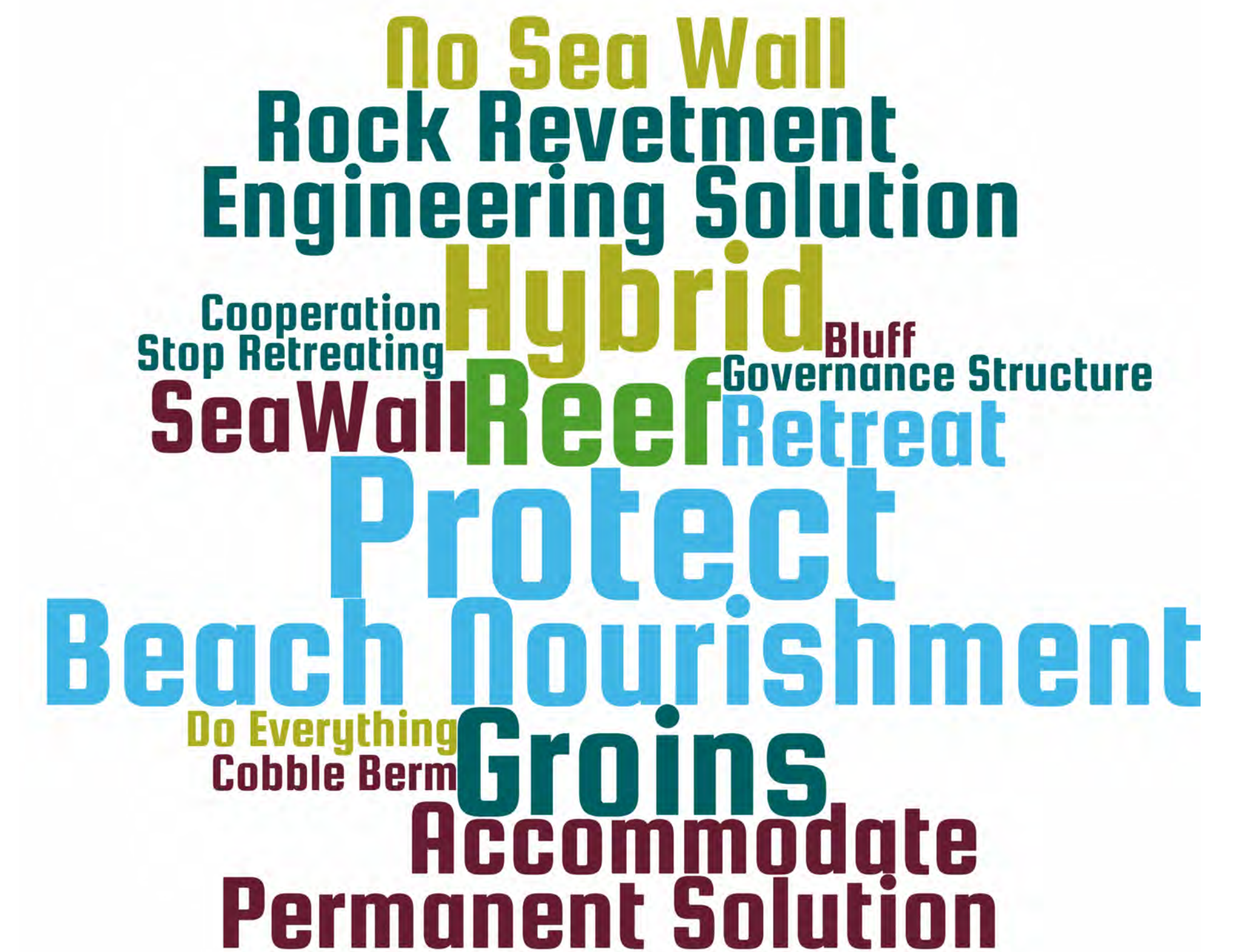
What do you enjoy at Capistrano Beach?



What are your concerns about Capistrano Beach?



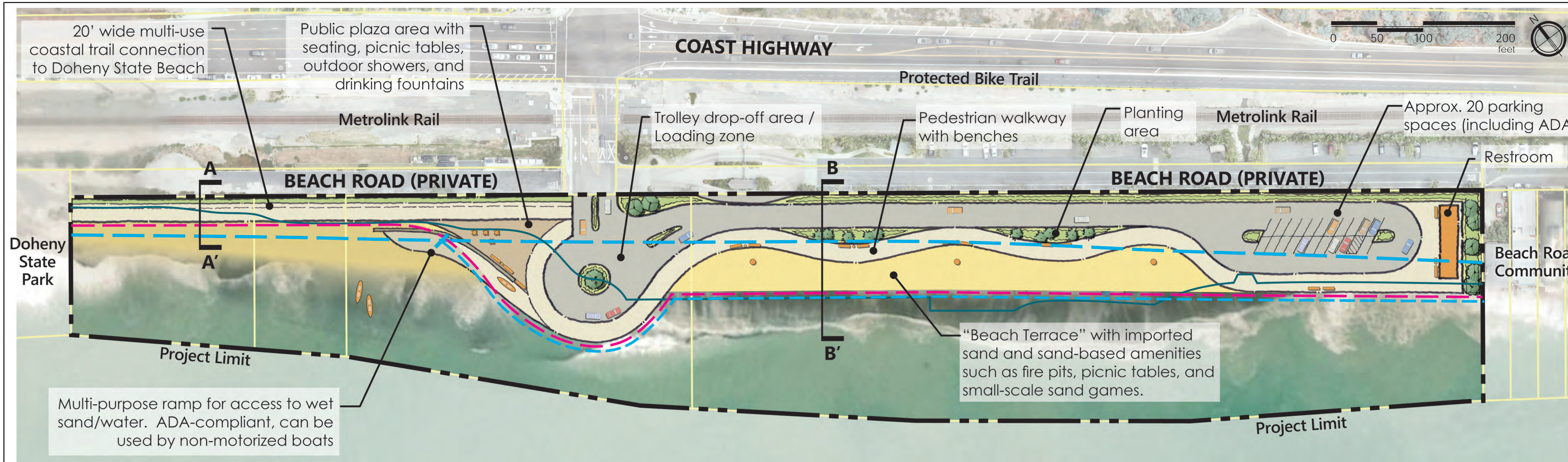
How should coastal hazards be addressed at Capistrano Beach?



Note: Text size corresponds to frequency of responses (i.e. the larger the text size, the more responses that item has received from the community)

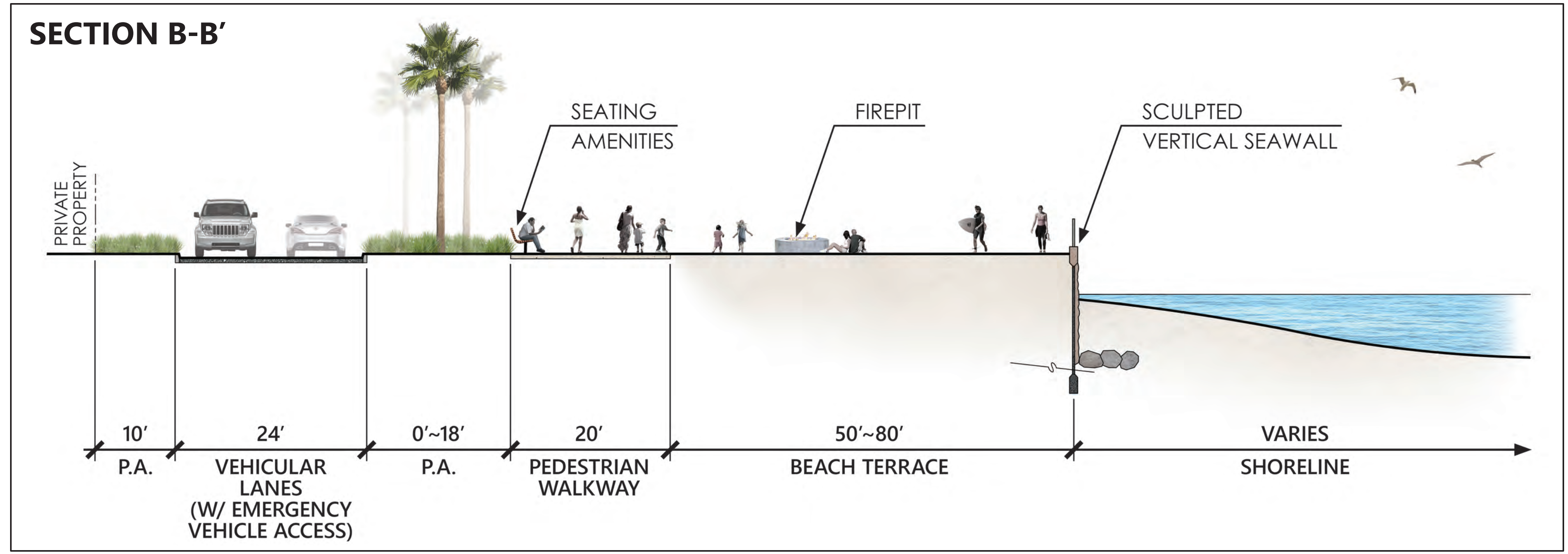
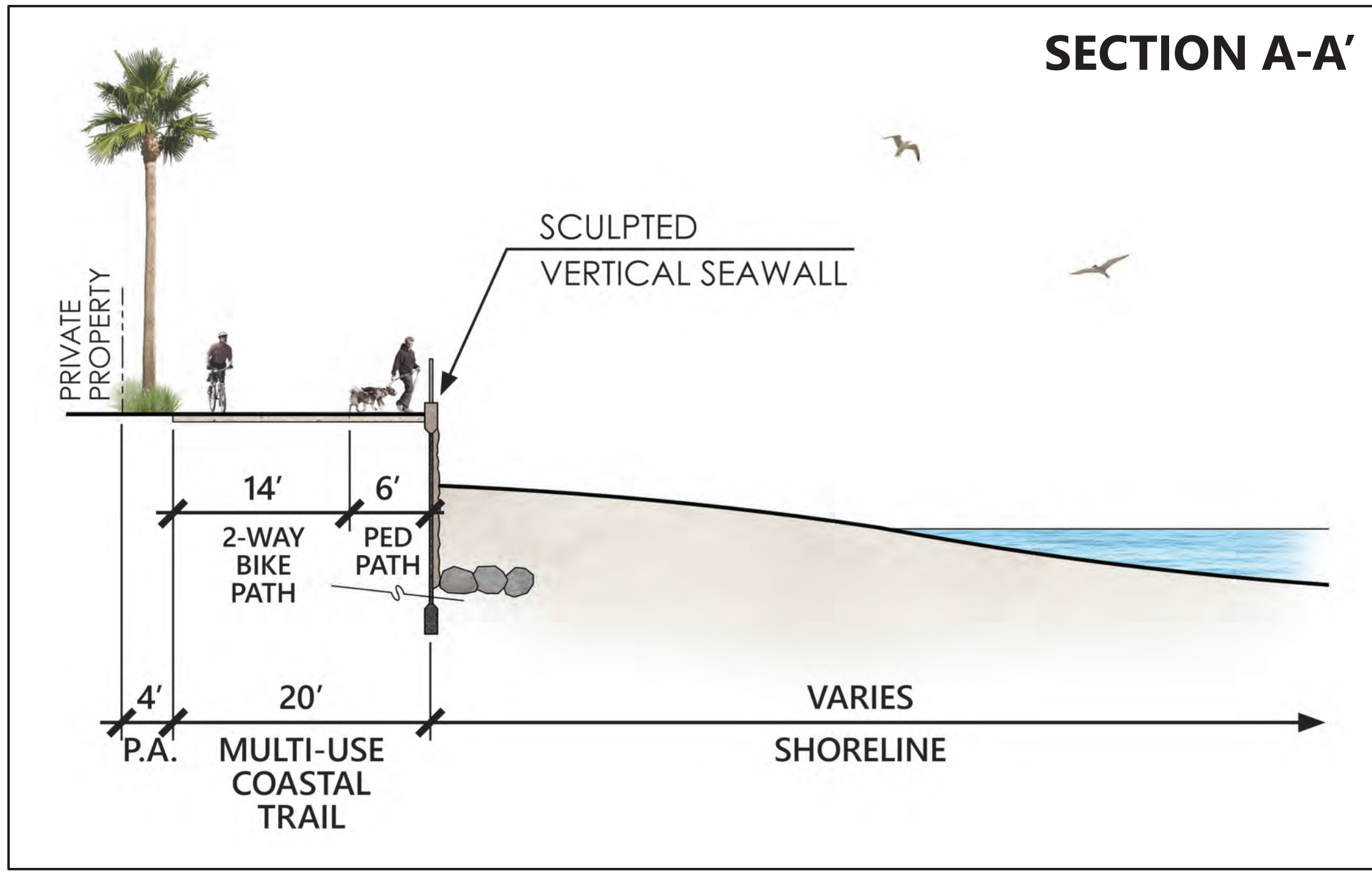
ALTERNATIVE 1

Adaptation Strategy: PROTECT



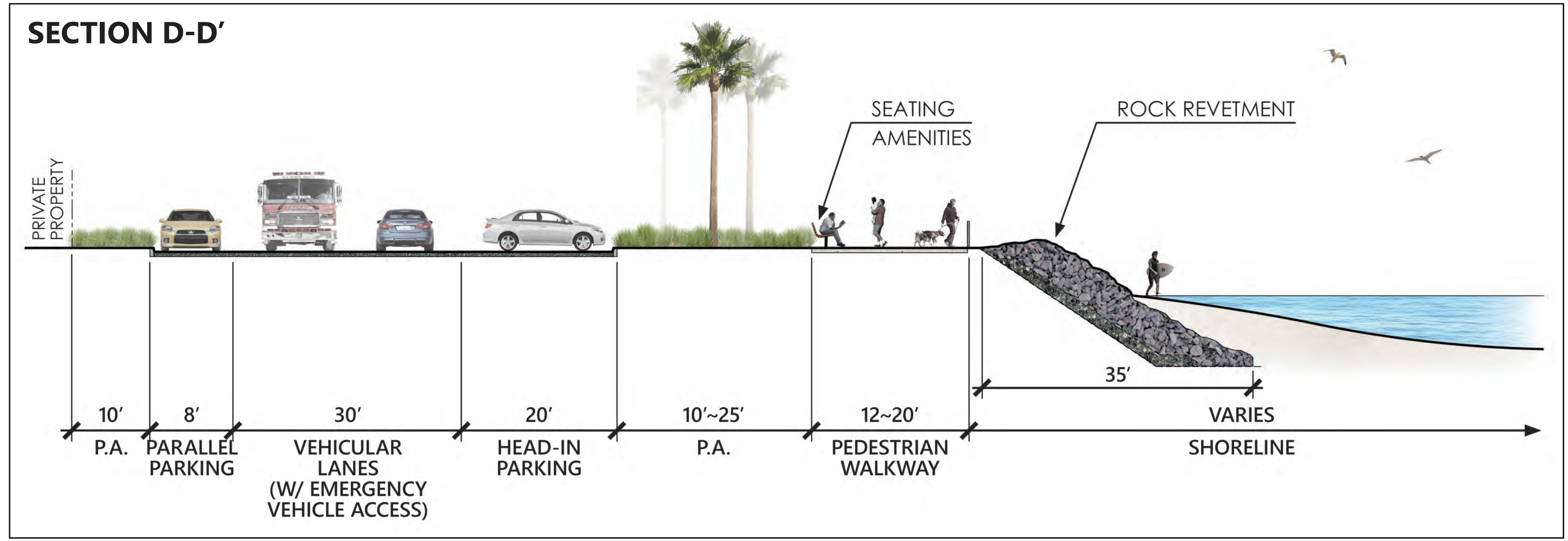
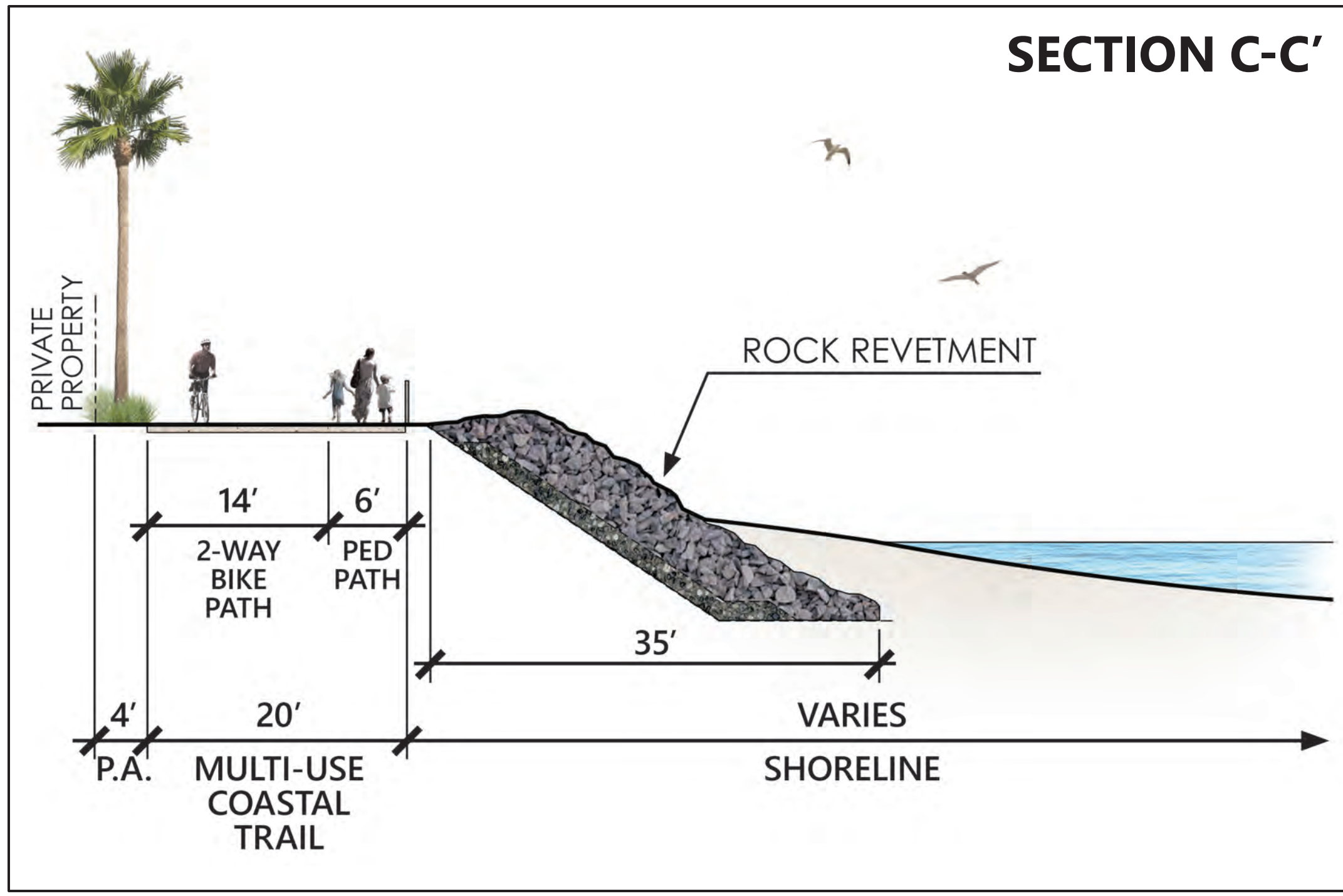
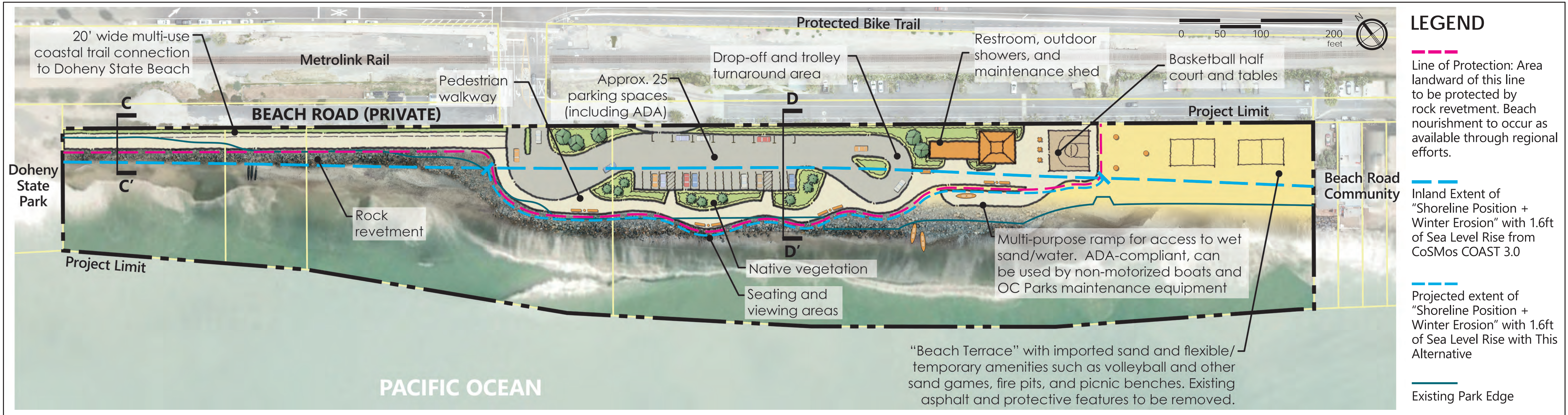
LEGEND

- Line of Protection: Area landward of this line to be protected by sculpted vertical seawall. Beach nourishment to be placed in front of wall as available through regional efforts.
- Inland Extent of "Shoreline Position + Winter Erosion" with 1.6ft of Sea Level Rise from CoSMos COAST 3.0
- Projected extent of "Shoreline Position + Winter Erosion" with 1.6ft of Sea Level Rise with This Alternative
- Existing Park Edge



ALTERNATIVE 2

Adaptation Strategy: HYBRID (PROTECT + RETREAT)



ALTERNATIVE 3

Adaptation Strategy: HYBRID (ACCOMMODATE + RETREAT)

